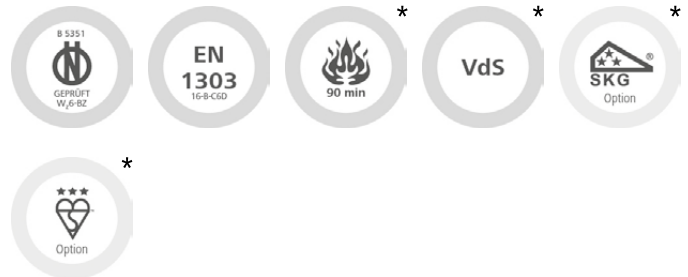


4KS European profile | DZ SYMO double cylinder



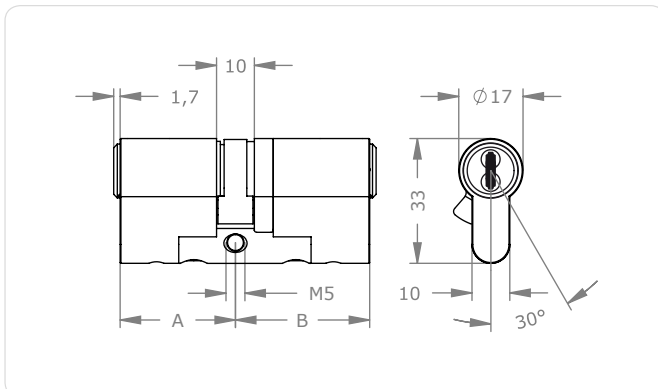
Standards and guidelines



Product description

The 4KS European profile double cylinder with modular design (SYMO) is suitable for indoor and outdoor use. The cylinder features external key override.

Potential applications are doors to residential properties or offices, connecting doors, metal frame doors and security doors.



Assembly tip

Maintain a maximum protrusion of 3 mm during assembly.

Application examples



Metal frame doors

The cylinder is suitable for installation in metal frame doors and escape route section doors as well as office access doors.



Full-leaf doors

The cylinder is suitable for installation in full-leaf doors, office and domestic property access doors as well as internal office doors.



External key override

This option makes it possible to also unlock the cylinder if a key has been inserted on the opposite side.

Technical information

Cylinder lengths on the outside A in mm	27 31 36 41 46 +5 ... A + B ≥ 62 mm
Cylinder length on the inside B in mm	27 31 36 41 46 +5 ... A + B ≥ 62 mm
Finish	NI – Nickel MS – Brass satin NP – Nickel front polished NPV – Nickel fully polished MP – Brass front polished and coated MPV – Brass fully polished and coated ML – Brass coated CR – Chrome CP – Chrome front polished CPV – Chrome fully polished PS – Patinated black PB – Patinated brown
Optional security features	ARS – Snapping protection AS-A – Outside anti-snap option FZG – Free wheel cam for geared lock KZS – Plug pulling/drilling protection SKG3-[A, I, B] – Certified SKG 3 lock cylinder* VDS – Certified VdS lock cylinder VDSBZ+ – Certified VdS-BZ+ lock cylinder
Options	BIF – Biffar® double cam BLIND – Blind cylinder SEW – Sea water resistance ZR14 – Cog wheel cam (14 teeth) ZVS – Cylinder with shortened body SSW – Protection against dust and weather conditions
Technical installation situation	
Usage characteristics options	BSZ – External key override NS – Nickel silver plug TXT – Customer-specific numbering
Security features	Unlocking authorisation verification in a minimum of 18 verification positions (authorisation positions) 12 springless, linear-control locking sliders Different steel elements made of hardened metal and hardened steel as drilling and plug pulling protection Durable and resistant Nirosta linking axis as twisting and snapping protection
Standards and guidelines	EN 1303:2015 16-1-C6D Austrian standard B5351: WZ6-BZ6-BZ EN1627 VdS BZ(+) option VdS option*** SKG option*** BSI option***
Technical installation situation	For mortise locks as per DIN, Austrian standard and screw-on locks suitable for the installation of European profile lock cylinders Cam width 9.3 mm
Included components	Lock cylinder with M5 fastening screw

Versions

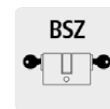


Cylinder length



Finish

Important options



BSZ

External key override



VdS

Tested as per VdS standards



AS-A

Outside anti-snap option



SKG

Tested as per SKG standards

Ordering

Product code	4KS DZ [Outside cylinder length A/Inside cylinder length B] [Finish] [Option] SYMO
Example	4KS double cylinder with European profile in SYMO modular design, outside 31 mm, inside 36 mm, nickel-plated finish, with BSZ option for external key override: 4KS DZ 31/36 NI BSZ SYMO