



Data sheet | MCS locking system

Double cylinders

The double cylinder with MCS technology combines EVVA magnet innovation with mechanical functions. The system was developed for the highest security requirements and the most complex access hierarchies. The organisational, legal, technical and technological key protection is unrivalled anywhere in the world in terms of key copying protection.

System and technology

- ▶ Magnetic scanning elements in the cylinder are brought into the correct blocking position without them needing to be touched
- ▶ Internationally unique functioning of the key authorisation scanning
- ▶ Regular vertical insertion of the key
- ▶ Combination of different technologies to protect against illegal key copies

Functional characteristics

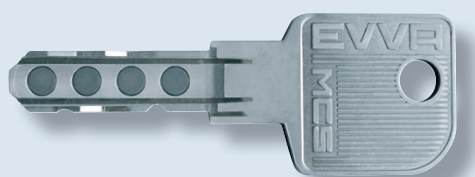
- ▶ High durability thanks to touch-free functioning principle
- ▶ Not affected by contamination
- ▶ Designed for complex access hierarchies
- ▶ Standard locking function: if a key is inserted on one side, locking cannot be carried out on the opposite side.
- ▶ Optional: external key override (BSZ), even if a key is inserted on one side locking can be carried out on the opposite side.

Security characteristics

- ▶ 8 freely rotating, tamper-proof, magnetic locking elements (rotors)
- ▶ 7 additional mechanical, horizontal locking elements without springs
- ▶ Bore and drill protection made of hard metal in the housing and plug
- ▶ Protection against picking thanks to touch-free key authorisation scanning
- ▶ Anti-snap protection provided by stainless steel cylinder connection axis
- ▶ Integrated overload protection for the discharge of locking forces in the cylinder
- ▶ Highest classification of locking security, resistance to attack and corrosion resistance

Assembly & operation

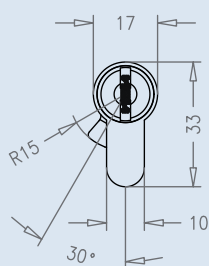
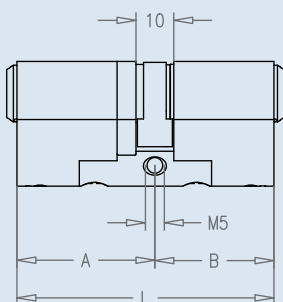
- ▶ Simple assembly in a DIN or ÖNorm (Austrian Standard) mortice or tubular frame lock
- ▶ The modular construction means that the lock cylinder can be adjusted to the door situation on site.



MCS key



MCS double cylinder



Technical data

Product code:	DC A/B (A/B, measurements mm)
Side length:	from 31 mm
Shortest cylinder dimension with standard locking function:	31/31 symmetrical cylinder, total length L = 62 mm
Shortest cylinder dimension with BSZ (external key override) function and GEFE (external key override emergency and danger) function:	31/36 cylinder, door thickness incl. fitting or escutcheon 67 mm
Cylinder fastening screw:	M5x60 (Austria), M5x80 (Germany)
Weight:	220 g (DC 31/31)
Packaging:	Single, display or master key system packaging No mandatory packaging
Special function:	Cogwheel for doors with multi point locking, Special synchronisation functions (e.g. double cam), KZS (special drilling and pulling protection), GEFE (emergency feature), VdS (German independent safety authority) class B cylinder according to VdS guidelines, Increased corrosion protection for special areas of application

Designs

Standard finish:	satin nickel-plated or laquered polished brass
Special finishes:	polished chrome, satin chrome, polished nickel, patinated brown, blackened, PVD coating on request

Accessories

Protection against dust and the elements
Special cylinder fastening screws
Maintenance spray