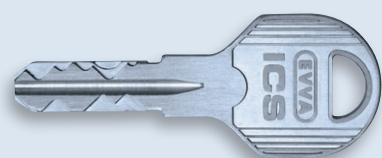


Datasheet | Lockingsystem ICS Double cylinder

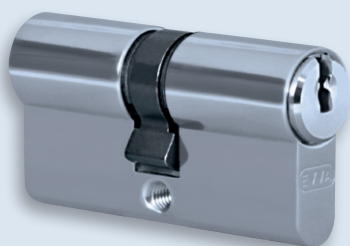
The double cylinder used with the new ICS (internally-coded system) technology is an innovative, very durable reversible key system with a patented functional principle. The functional, rounded form and ergonomic shape of the key fulfil the highest demands for convenience. ICS is at the top level of technical security: the high degree of organisational, legal and technical key protection offered by ICS provides optimal protection against key copying.

System & Technology

- ▶ Locking system with up to 13 active, spring-loaded locking elements
- ▶ Combination of split and non-split pins
- ▶ Patented concealed curve contour and optimised curve pattern on the key
- ▶ Three levels of scanned locking authorisation on the key
- ▶ Customary vertical insertion of the key in the lock cylinder
- ▶ A combination of compact (cylinders) and modular cylinders is possible within the locking system (Euro profile)



ICS-Key



ICS-Double cylinder

Functional characteristics

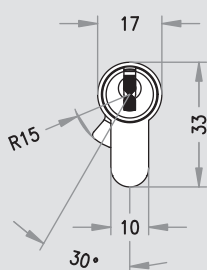
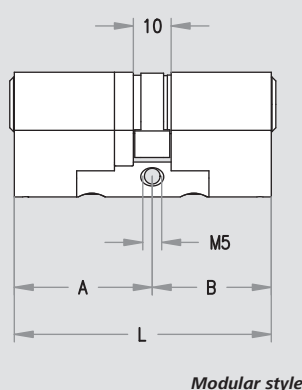
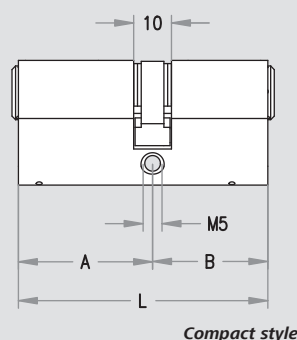
- ▶ High degree of wear resistance due to the use of special, very robust, nickel silver keys
- ▶ Locking authorisation test on up to 15 key positions and a paracentric (i.e. overlapping) key profile
- ▶ key turn: 360 degrees
- ▶ Standard locking function: for single-sided key insertion the opposite side cannot be locked.
- ▶ Optional „BSZ“ external key override: even with a key inserted on one side, the door can be locked from the other side.

Security characteristics

- ▶ Scan and pick protection through: specially formed locking elements, fake opening positions and overlapping key profile
- ▶ Bore and drill protection through specially aligned, hardened steel protective elements
- ▶ Complies with lock security class 6 per EN 1303:2008 (highest class)
- ▶ Complies with attack resistance class 2 per EN 1303:2008 (highest class)
- ▶ Complies with the requirements of standards for fire and smoke doors EI30, E30

Assembly & production shop

- ▶ Simple installation in mortise or tubular frame locks per DIN or ÖNORM (Austrian Standard) as well as in Swiss mortise locks intended for the CH profile
- ▶ The optional modular design allows the lock cylinder to be adapted to the given on-site door situation.



Technical Data

Productcode:	DZ A/B (A/B, in mm)
Lengths:	from 27 mm
Shortest cylinder dimension for standard locking function (compact and modular designs):	
	27/27 (A/B) symmetrical cylinder, overall length L = 54 mm
	27/31 (A/B) asymmetrical cylinder, overall length L = 58 mm
Shortest cylinder dimension for BSZ function (compact and modular designs)	
	31/31 (A/B) symmetrical cylinder, overall length L = 62 mm
	27/36 (A/B) asymmetrical cylinder, overall length L = 63 mm
Cylinder screw:	M5×60 (AUT), M5×80 (D)
Weight:	220 g (DZ 31/31)
Evidence of conformity:	<ul style="list-style-type: none"> - VdS: locking cylinder complies with anti-pulling protection class BZ(+) - Complies with EN1303: 2008 (lock security class 6, attack resistance class 2) - Fire and smoke doors EI30, E30, T30, R30
Packaging:	Single, display or lock-system packaging; packaging fees paid
Security options:	<ul style="list-style-type: none"> - BSZ: external key override - KZS: enhanced protection against drilling - Planned VdS certification: class BZ(+) lock cylinder protection against pulling - Planned individual key security also recognised for EMA switch mechanisms (class BZ+)
Application options:	<ul style="list-style-type: none"> - Cogwheel for doors with multi-point locking - Special synchronisation functions (e.g. double cam) - Protection mechanism against dust and weathering (SSW) - Seawater resistant model (SEW)

Specifications

Standard finishes:	satin nickel plated or satin brass
Special finishes:	polished chrome, satin chrome, polished nickel, polished brass lacquered, brown patinated, black patinated, PVD plated

Accessories

Special cylinder screw
Maintenance spray