



Product catalogue

Mechanical locking system **MCS**

System characteristics

MCS uses the elementary power of magnetism. Its one magnetic and two mechanical codings guarantee triple security. Its permanent magnetisation is durable and long-lasting. MCS was developed by EVVA in close cooperation with technical universities – for strict security requirements and highly complex access hierarchies.

Key copying protection

- ▶ Organisational protection thanks to an identification procedure for key duplicate orders
- ▶ Legal protection thanks to patents and industrial property rights
- ▶ Technical and technological protection thanks to features such as permanent magnetisation

Lock cylinder security

- ▶ Picking protection
- ▶ Drilling protection
- ▶ Snapping and plug pulling protection
- ▶ Picking resistance
- ▶ Bump key protection

How you benefit

- ▶ Maximum key copying protection
- ▶ For highly complex master key systems
- ▶ Each lock and each key are unique
- ▶ One magnetic and two mechanical (profile and locking pin) levels of coding
- ▶ Samarium cobalt 5 permanent magnets ensure a long service life. They cannot be re-magnetised or de-magnetised using conventional methods
- ▶ Dual authorisation queries during the locking action
- ▶ Optimum wear resistance
- ▶ Modular design

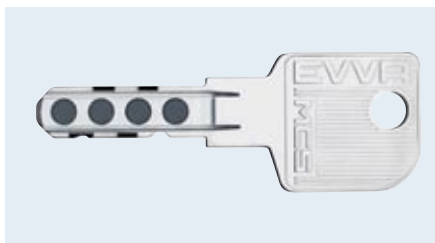
Length deviations of 0.5 mm per cylinder side possible



Table of Contents

Keys	2
Double cylinders	6
Thumbturn cylinders	16
Half cylinders	21
Round cylinders	23
Padlocks	26
Cam locks and switch cylinders	30
Cabinet cylinders	37
Rim cylinders	44
Portal cylinders	49
EMZY	51
Cam types	52
Accessories	54

Standard Key

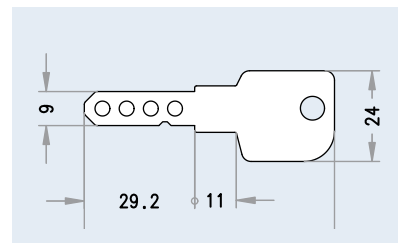


Ordering information

- ▶ SL [system and key number]

Technical data

- ▶ Key made of an extremely durable nickel silver alloy



Key With Colour Dot

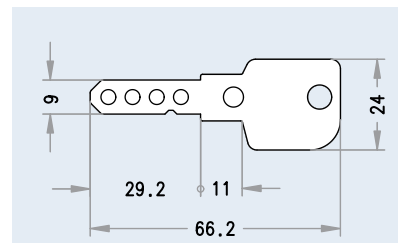


Ordering information

- ▶ SL [system and key number]
- ▶ Colour dot [colour]: red, blue, green, yellow, brown, black, ice green, violet, dark red, aubergine, pink

Technical data

- ▶ Key made of an extremely durable nickel silver alloy
- ▶ Recessed colour dot on key neck



Key With Plastic Cap

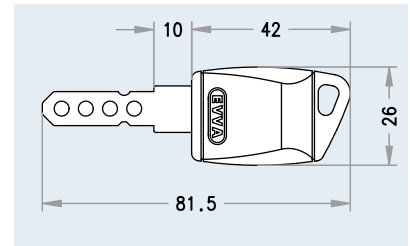


■ Technical data

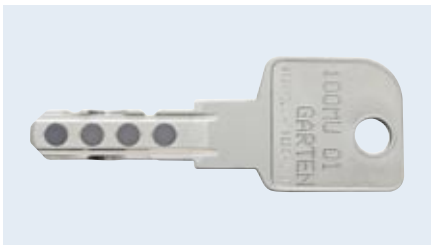
- ▶ Key made of an extremely durable nickel silver alloy
- ▶ Key cap made of plastic; colour: anthracite
- ▶ Key upper section made of plastic; colour: anthracite, red, blue, yellow, green.

Ordering information

- ▶ SLKA [system and key number]
- ▶ Unless otherwise specified, key has anthracite colour or key upper section in red, blue, green, yellow



Key With Additional Numbering

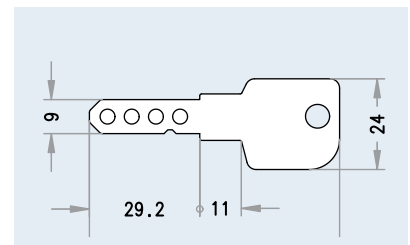


■ Technical data

- ▶ Customised inscription (in addition to system number and key number), e.g. "garden"
- ▶ Consecutive numbering of keys (keys with identical authorisations receive consecutive number)
- ▶ Key made of an extremely durable nickel silver alloy

Ordering information

- ▶ SL [system and key number] designation/number as required by customer; up to 18 characters if technically possible (no special characters)



Proximity Combi-key

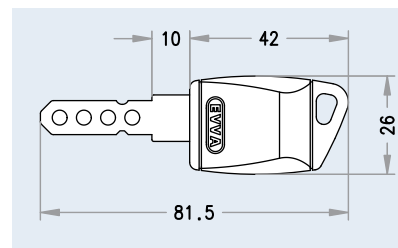


Ordering information

- ▶ SL [system and key number] CCM1KES (MIFARE 1k, anthracite)
- ▶ SL [system and key number] CCM4KES (MIFARE 4k, anthracite)
- ▶ SL [system and key number] CCD4KES (Desfire 4k, anthracite)
- ▶ SL [system and key number] CCL1KES (Legic 1k, anthracite)
- ▶ Red or yellow cap colour available

Technical data

- ▶ Key with integrated electronic identification medium (contactless)
- ▶ Key bow made of durable polycarbonate; colour: anthracite



iButton Combi-key

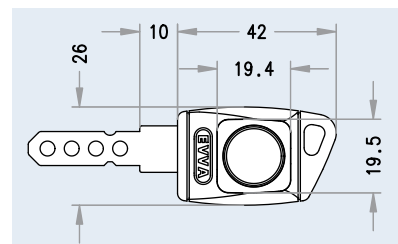


Ordering information

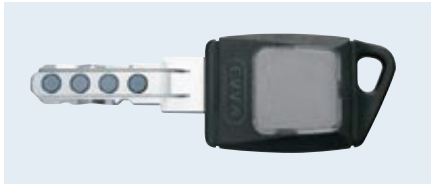
- ▶ SL [system and key number] CEIRWES (iButton R/W 512B)

Technical data

- ▶ Key with integrated electronic identification medium (touch-sensitive)
- ▶ Key bow made of durable polycarbonate; colour: anthracite



Combi-key Upgrade Models

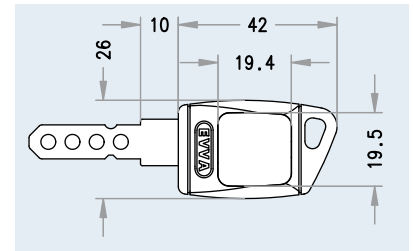


Ordering information

- SL [system and key number] CE000TS

Technical data

- Key is designed to incorporate electronic upgrade media (contactless and touch-sensitive)
- Key bow made of durable polycarbonate, without electronics; colour: anthracite
- Key can be retrofitted with an electronic medium by the customer



MIFARE 1 K/Legic 1 K Combi-key Upgrade Medium



Ordering information

- CMM1KE0
- CML1KE0

Technical data

- Key cover with integrated electronic identification medium for use in Combi-key upgrade models
- MIFARE 1 K identification medium
- Legic 1 K identification medium

iButton R/W 512 B Combi-key Upgrade Medium



Ordering information

- CMIRWE0

Technical data

- Key cover with integrated electronic identification medium for use in Combi-key upgrade models
- iButton R/W 512 B identification medium

DZ Double Cylinder



Ordering information

- DZ cylinder length A/B, [finish], [security and usage options]

Applications and usage

- For mortise locks in accordance with DIN or ÖNORM
- For mortise locks in accordance with European technical standards
- For mortise locks with profile cylinder hole

Functional characteristics

- Lockable on both sides with key
- Cam rotation: 360 degrees
- Cam removal position: 30 degrees (from the short side)

Security features

- Hard metal drilling protection in plug and body
- Pulling protection due to chrome-nickel connecting rod
- Vertical key insertion and optimal scanning of locking elements

Technical data

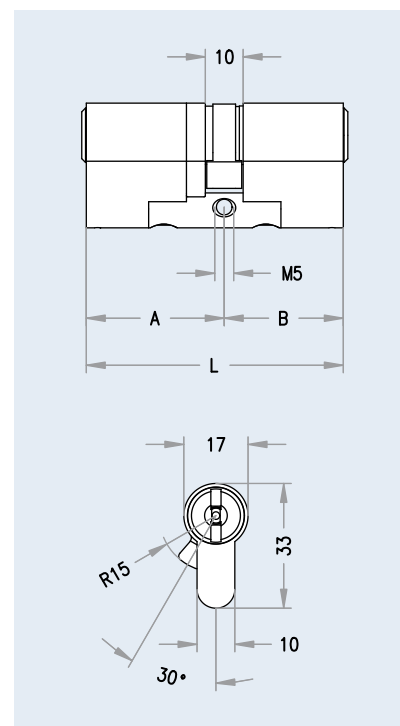
- Cylinder body base material: brass
- Cylinder plug base material: brass
- Cam home position: 30 degrees
- Cam width: 9.3 mm
- Modular cylinder design

Scope of supply

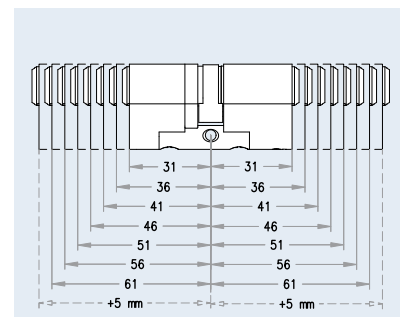
- Locking cylinder with fixing screw

Installation & operation

- Easy cylinder installation in a prepared, empty cylinder hole
- Cylinder projecting length may not exceed 3 mm for security-relevant doors
- Cylinder fixed through a M5 fastening hole



Cylinder lengths



Finishes

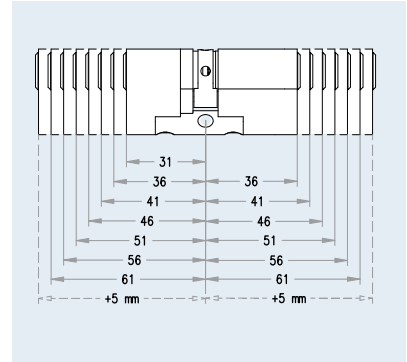
Finishes	Abbreviations	Standard	Surcharge
Polished brass	PB	●	
Satin nickel	NI	●	
Polished nickel	PN		○
Satin chrome	CR		○
Polished chrome	PC		○
Black	BL		○
Brown	BW		○
Satin brass	BR		○
PVD	PVD		○

DZ Double Cylinder | Options



BSZ - double cylinder with external key override, danger function for double cylinder

Permits operation of the cylinder even when an authorised key is inserted in the opposite side.



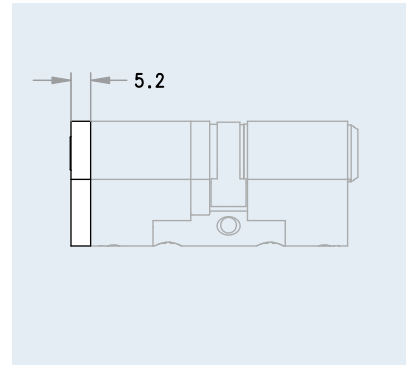
Ordering information

- DZ cylinder length A/B, [finish] BSZ



SSW – protection mechanism against dust and weathering influences (dust cover)

Spring-loaded shutter plates integrated into the cylinder that automatically open or close when the key is inserted or removed.



Ordering information

- DZ cylinder length A/B, [finish]
 - SSW-BS (both sides)
 - SSW-ES (one-sided, with symmetric cylinders)
 - SSW-KS (short side)
 - SSW-LS (long side)

DZ Double Cylinder | Options

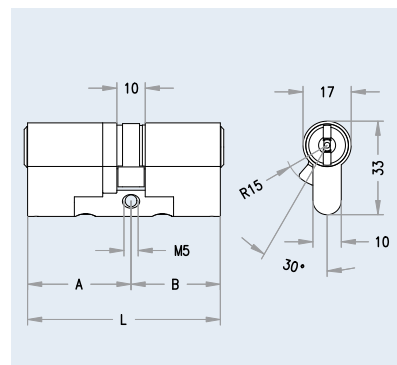


Ordering information

- DZ cylinder length A/B, [finish]
SEW

SEW - seawater resistant model

For cylinders exposed to more severe environmental influences. Corrosion-susceptible cylinder parts are supplied with a special surface treatment.



Ordering information

- DZ cylinder length A/B, [finish]
VdS

VdS-cylinder

VdS-certified cylinder for installation in high-security areas. Increased resistance to visible and non-visible opening techniques. VdS-cylinders are manufactured according to the currently valid VdS-guidelines.

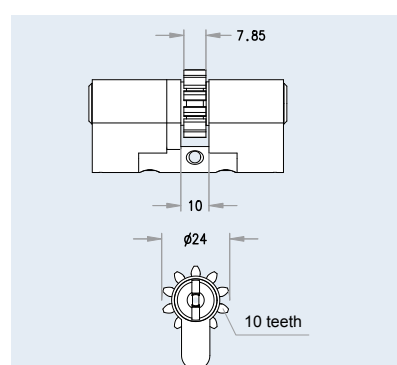


Ordering information

- DZ cylinder length A/B, [finish] ZR10

ZR10 cog-wheel cam (10 teeth)

The cylinder is designed for multi-point locks or special mortise locks that are operated via a gear ring or a toothed rack.



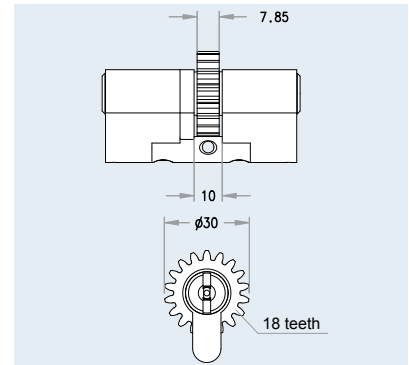
DZ Double Cylinder | Options



ZR18 cog-wheel cam

(18 teeth)

The cylinder is designed for multi-point locks or special mortise locks that are operated via a gear ring or a toothed rack.



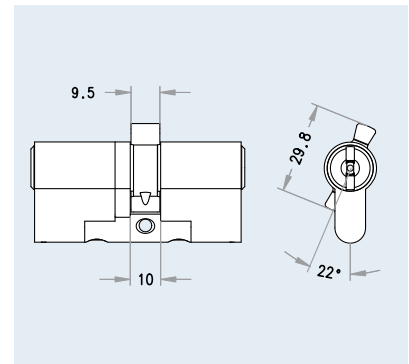
Ordering information

- DZ cylinder length A/B, [finish] ZR18



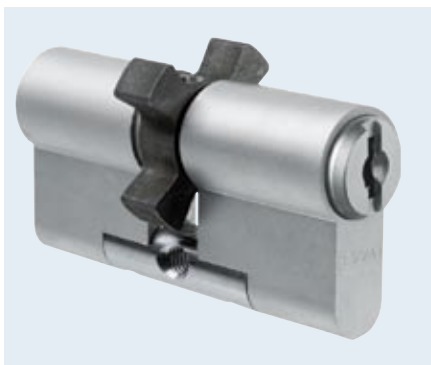
BIF double cam

The cylinder is designed for manufacturer-specified locks in Biffar doors.



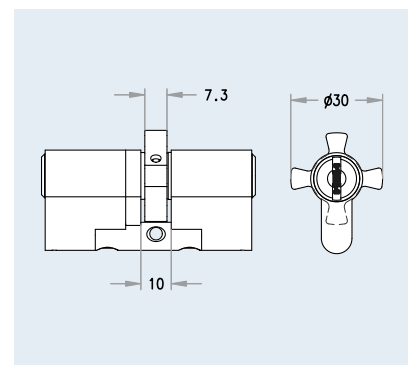
Ordering information

- DZ cylinder length A/B, [finish] BIF
- Cam position: 22 degrees, from short cylinder side
- Please observe the door manufacturer's instructions.



STEN star cam

The cylinder is designed for ABUS bar locks types PR1500 & PR1600.



Ordering information

- DZ cylinder length A/B, [finish] STEN

Set to expire

DZ Double Cylinder | Options

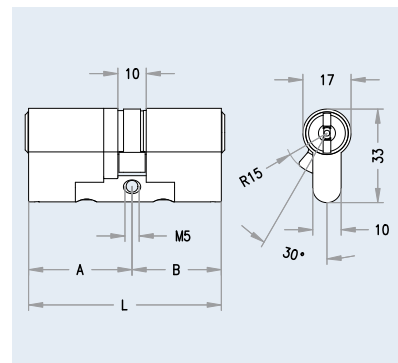


Ordering information

- DZ cylinder length A/B, [finish] GEFE

GEFE – emergency key feature

A special emergency key can operate the cylinder even when an authorised key is inserted on the opposite side.

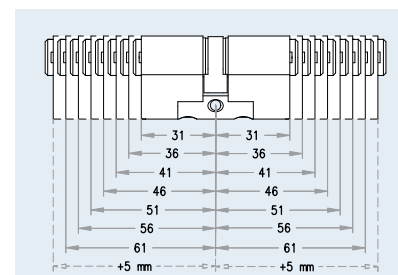
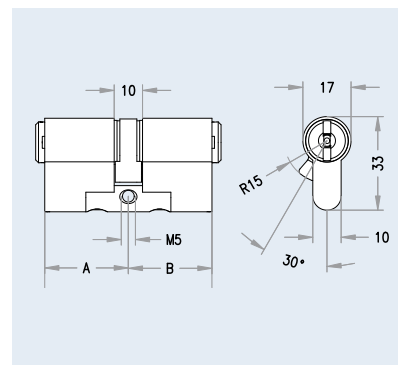


Ordering information

- DZ cylinder length A/B, [finish] ZVS-(ES/LS/KS)
- ZVS-ES (one-sided, with symmetric cylinders)
- ZVS-LS (long side)
- ZVS-KS (short side)

Double cylinder with shortened body

Cylinder with shortened body, also for use in special metal-frame doors with integrated security rose.

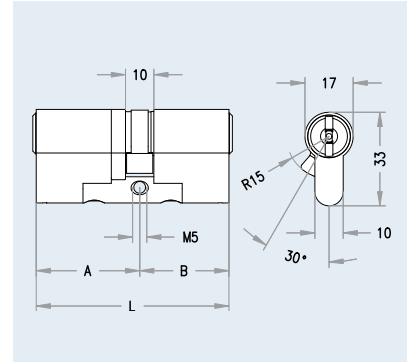


DZ Double Cylinder | Options



PA partner cylinder

The cylinder can only be operated when an authorised key is inserted on the opposite side.



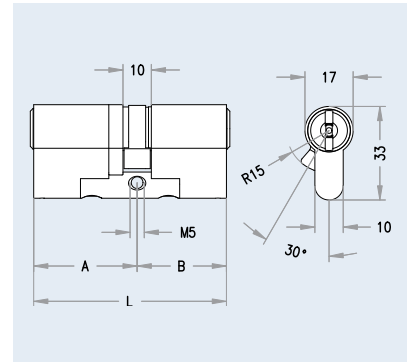
Ordering information

- DZ cylinder length A/B, [finish] PA



USH differing locking hierarchy

The cylinder has different A/B hierarchic authorisation levels, e.g. the outside can only be operated by a super-ordinate key while the inside can be operated with any authorised key.



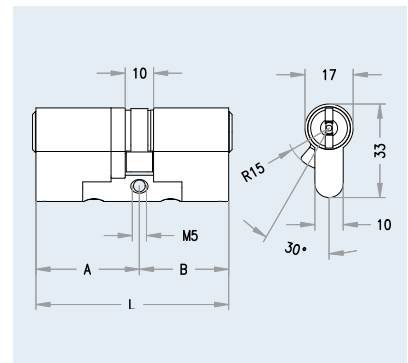
Ordering information

- DZ cylinder length A/B, [finish] USH;
- Specification of locking authorisations per cylinder side (A/B)



FL2 - double cylinder with free-wheel function

Cylinder with 360 degree free-wheeling cam when key is not inserted. Coupling engaged when the key tip is inserted.



Ordering information

- DZ cylinder length A/B, [finish], FL2

DZ Double Cylinder | Options

Options overview

S = Standard

● Simple combination possible

		external key override	dust cover	sea water resistant	protection against breaking off	cylinder certified acc to VdS	cog wheel cam (10 teeth)	cog wheel cam (18 teeth)	Biffar double cam	star cam	shortened body	partner function	differing locking hierarchy	free wheel cam	four-eyes principle
		BSZ	SSW	SEW	ARS	VDS	ZR10	ZR18	BIF	STEN	ZVS	PA	USH	FREI	DUP
external key override	BSZ	-	●	●	-	●	●	●	●	●	●	-	●	-	-
dust cover	SSW	●	-	●	-	●	●	●	●	●	-	●	●	●	-
sea water resistant	SEW	●	●	-	-	●	●	●	●	●	●	●	●	●	-
protection against breaking off	ARS	-	-	-	-	-	-	-	-	-	-	-	-	-	-
cylinder certified acc to VdS	VDS	●	●	●	-	-	●	●	●	●	-	-	●	-	-
cog wheel cam (10 teeth)	ZR10	●	●	●	-	●	-	-	-	-	●	●	●	-	-
cog wheel cam (18 teeth)	ZR18	●	●	●	-	●	-	-	-	-	●	●	●	-	-
Biffar double cam	BIF	●	●	●	-	●	-	-	-	-	●	●	●	-	-
star cam	STEN	●	●	●	-	●	-	-	-	-	●	●	●	-	-
shortened body	ZVS	●	-	●	-	-	●	●	●	●	-	●	●	●	-
partner function	PA	-	●	●	-	-	●	●	●	●	●	-	●	-	-
differing locking hierarchy	USH	●	●	●	-	-	●	●	●	●	●	●	-	●	-
free wheel cam	FREI	-	●	●	-	-	-	-	-	-	●	-	●	-	-
four-eyes principle	DUP	-	-	-	-	-	-	-	-	-	-	-	-	-	-

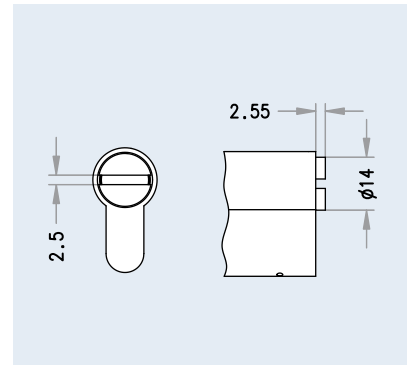
DZ Double Cylinder | Options



Double cylinder, slot on one side

Can be operated with an authorised key on one side and with a flat object on the Flex side.

Cam rotation is 360 degrees and cam removal position is 30 degrees (from the short side).



Ordering information

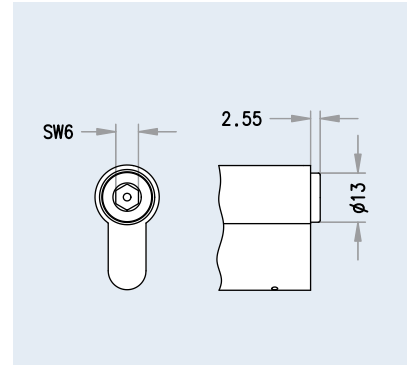
- DZ cylinder length A/B, [finish] Flex S (ES/LS/KS)
- Flex S-ES (one-sided, with symmetric cylinders)
- Flex S-LS (long cylinder side)
- Flex S-KS (short cylinder side)



Double cylinder, Allen socket on one side

Can be operated with an authorised key on one side and with a SW6 Allen key on the Flex side.

Cam rotation is 360 degrees and cam removal position is 30 degrees (from the short side).



Ordering information

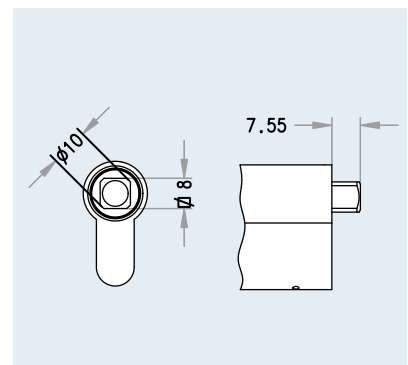
- DZ cylinder length A/B, [finish] (ES/LS/KS) [security, application and convenience options]
- Flex I6-ES
- Flex I6-LS
- Flex I6-KS



Double cylinder, square socket on one side

Can be operated with an authorised key on one side and with an 8mm square socket key on the Flex side.

Cam rotation is 360 degrees and cam removal position is 30 degrees (from the short side).



Ordering information

- DZ cylinder length A/B, [finish] (ES/LS/KS) [security, application and convenience options]
- Flex 4K-ES
- Flex 4K-LS
- Flex 4K-KS

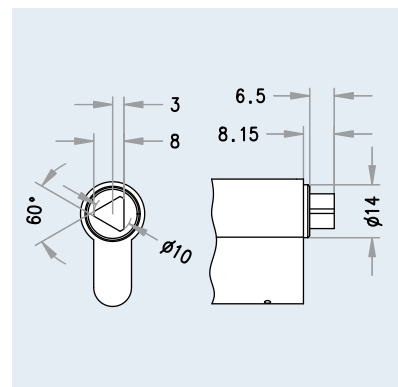
DZ Double Cylinder | Options



Double cylinder, 8 mm three-square socket on one side

Can be operated with an authorised key on one side and with an 8 mm three-square key on the Flex side.

Cam rotation is 360 degrees and cam removal position is 30 degrees (from the short side).



Ordering information

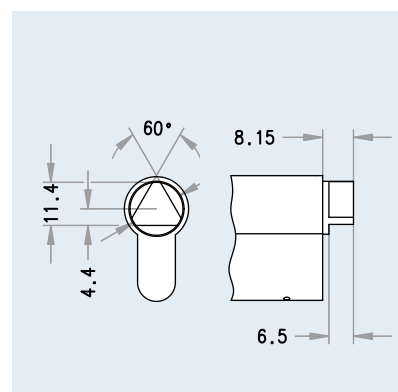
- DZ cylinder length A/B, [finish] (ES/LS/KS) [security, application and convenience options]
- Flex D8-ES
- Flex D8-LS
- Flex D8-KS



Double cylinder, 11 mm three-square socket on one side

Can be operated with an authorised key on one side and with an 11 mm three-square key on the Flex side.

Cam rotation is 360 degrees and cam removal position is 30 degrees (from the short side).



Ordering information

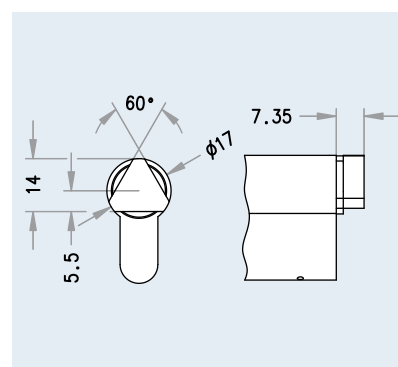
- DZ cylinder length A/B, [finish] (ES/LS/KS) [security, application and convenience options]
- Flex D11-ES
- Flex D11-LS
- Flex D11-KS



Double cylinder, 14 mm three-square socket on one side

Can be operated with an authorised key on one side and with a 14 mm three-square key on the Flex side.

Cam rotation is 360 degrees and cam removal position is 30 degrees (from the short side).



Ordering information

- DZ cylinder length A/B, [finish] (ES/LS/KS) [security, application and convenience options]
- Flex D14-ES
- Flex D14-LS
- Flex D14-KS

DZ Double Cylinder | Options

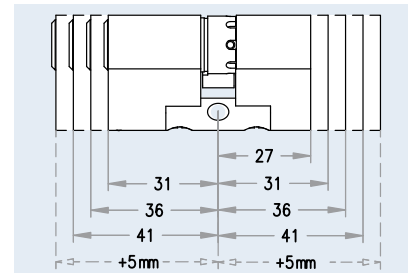
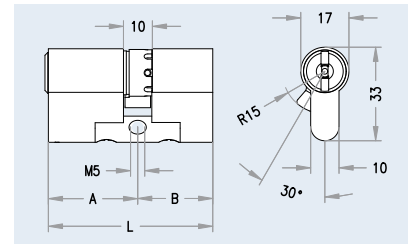


Double cylinder, blind on one side

Can be operated with an authorised key on one side.

Other cylinder side is blind, cannot be operated.

Cam rotation is 360 degrees and cam removal position is 30 degrees (from the short side).



Ordering information

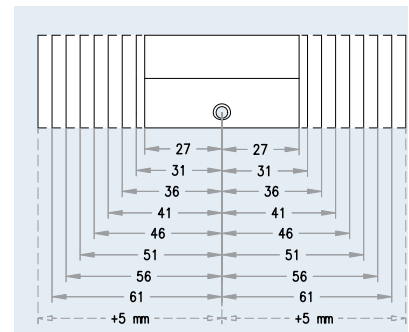
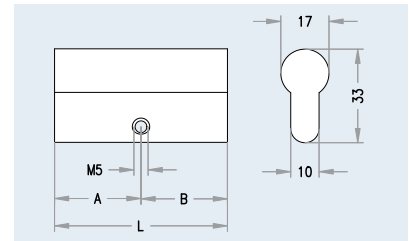
- DZ cylinder length A/B, [finish], Flex BL-(ES/LS/KS)
- Flex BL-ES (one sided with symmetric cylinders)
- Flex BL-LS (long cylinder side)
- Flex BL-KS (short cylinder side)



Double cylinder, blind on both sides

Double cylinder is blind on both sides; mortise lock cannot be used.

For doors that must not be locked but where the cylinder hole must be sealed.



Ordering information

- DZ cylinder length A/B, [finish], BLIND

KZ Thumbturn Cylinder



Ordering information

- ▶ KZ cylinder length A/B (A=outer side; B=inner side (thumbturn side)) [security and usage options]
- ▶ [finish]/[thumbturn design]
- ▶ When thumbturn design is not specified: AKN standard thumbturn

Applications and usage

- ▶ For mortise locks in accordance with DIN or ÖNORM
- ▶ For mortise locks in accordance with European technical standards
- ▶ For house doors, connecting doors, flat entry doors, security doors, metal frame doors, ...

Functional characteristics

- ▶ Can be locked from the outside with a key
- ▶ Thumbturn on the inside to lock and unlock the door
- ▶ Cam rotation: 360 degrees

Security features

- ▶ Hard metal drilling protection in the outside plug and body
- ▶ Pulling protection through chrome-nickel connecting rod
- ▶ Vertical key insertion for optimal scanning of locking elements

Technical data

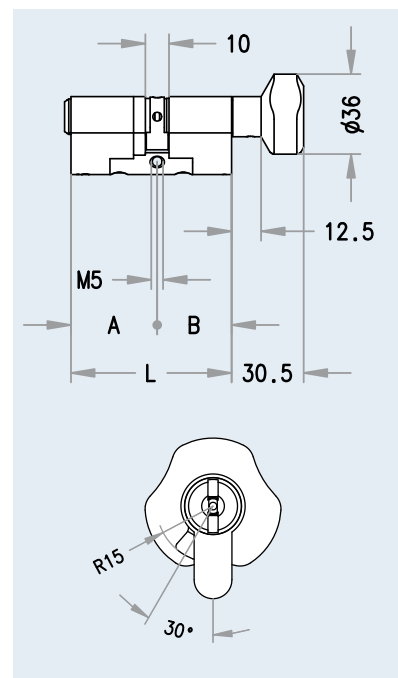
- ▶ Cylinder body base material: brass
- ▶ Cylinder plug base material: brass
- ▶ Cam home position: 30 degrees
- ▶ Cam width: 9.3 mm
- ▶ Modular cylinder design

Scope of supply

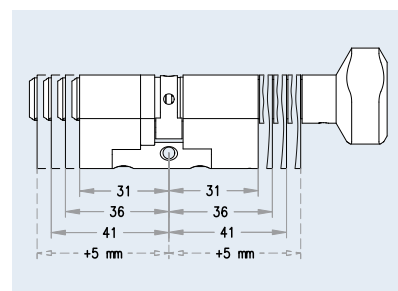
- ▶ Locking cylinder with thumbturn and fixing screw

Installation & operation

- ▶ Easy cylinder installation in a prepared, empty cylinder hole
- ▶ Cylinder projecting length may not exceed 3 mm for security-relevant doors
- ▶ If required, inside thumbturn can be removed with a tool and replaced with another EVVA thumbturn
- ▶ Cylinder fixed through a M5 fastening hole



Cylinder lengths



Finishes

Finishes	Abbreviations	Cylinder	AKN, KKN, FKN	RKN, MKN	OKN, OKNA	GKN
Polished brass	PB	●	●	●	●	●
Satin nickel	NI	●	●	●	●	●
Polished nickel	PN	○	○	○	○	○
Satin chrome	CR	○	○	○	○	○
Polished chrome	PC	○	○	○	○	○
Black	BL	○	○	○	○	○
Brown	BW	○	○	○	○	○
Satin brass	BR	○	○	○	○	○
PVD	PVD	○	○	○	○	○
RAL colours	RAL					○
F2 anodized	F2				○	
F3 anodized	F3				○	

- Standard
- Surcharge

AKN Standard Thumbturn



Functional characteristics

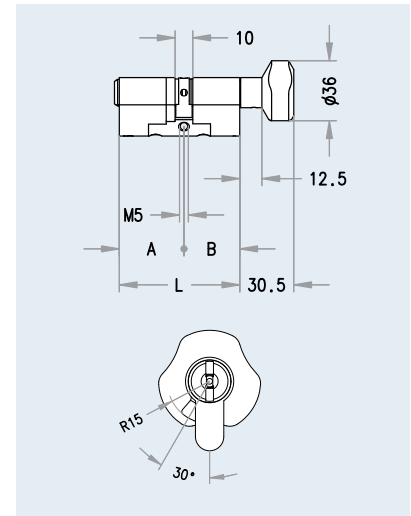
- ▶ Removable thumbturn with three grip recesses

Technical data

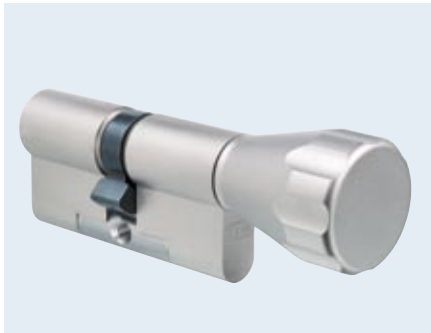
- ▶ Base material: brass
- ▶ Finishes: satin nickel plated, satin brushed, polished lacquer

Ordering information

- ▶ KZ cylinder length A/B [A=outer side; B=inner side (thumbturn side)] [security and usage options]
- ▶ [finish]/AKN



KKN Conical Thumbturn



Functional characteristics

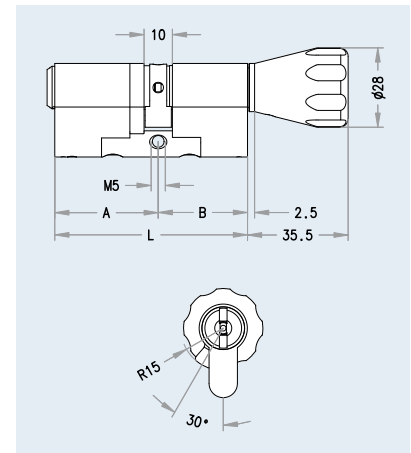
- ▶ Removable, cone-shaped thumbturn with grip recesses

Technical data

- ▶ Base material: brass
- ▶ Finishes: satin nickel plated, satin brushed, polished lacquer

Ordering information

- ▶ KZ cylinder length A/B [A=outer side; B=inner side (thumbturn side)] [security and usage options]
- ▶ [finish]/KKN



RKN Round Thumbturn



Functional characteristics

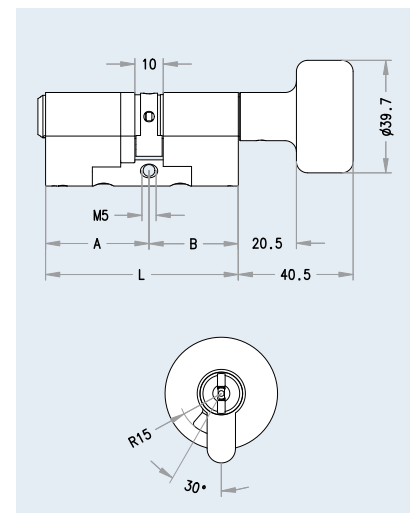
- ▶ Removable, round thumbturn set off to the rear

Technical data

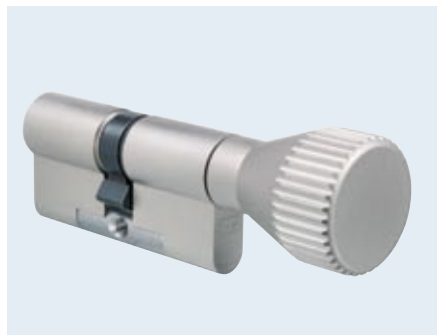
- ▶ Base material: brass
- ▶ Finishes: satin nickel plated, satin brushed, polished lacquer

Ordering information

- ▶ KZ cylinder length A/B [A=outer side; B=inner side (thumbturn side)] [security and usage options]
- ▶ [finish]/RKN



MKN Knurled Metal Thumbturn



Functional characteristics

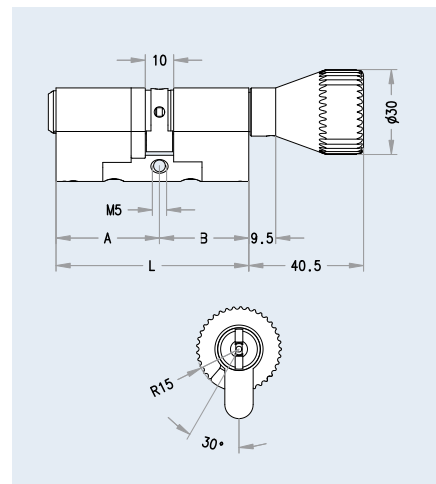
- ▶ Removable, knurled thumbturn with medium-sized serrations

Technical data

- ▶ Base material: brass
- ▶ Finishes: satin nickel plated, satin brushed, polished lacquer

Ordering information

- ▶ KZ cylinder length A/B [A=outer side; B=inner side (thumbturn side)] [security and usage options]
- ▶ [finish]/MKN



GKN Recessed Grip Thumbturn



Functional characteristics

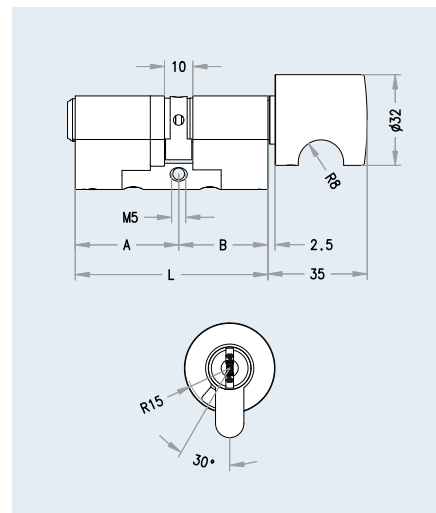
- ▶ Removable, round thumbturn set off to the rear

Technical data

- ▶ Base material: brass
- ▶ Finishes: satin nickel plated, satin brushed, polished lacquer
- ▶ Or lacquered in RAL colours: blue RAL5002; dark green RAL6012; yellow RAL1004; green RAL6001; grey RAL7038; red RAL3003; black RAL9005; white RAL 9010; other RAL colours on request

Ordering information

- ▶ KZ cylinder length A/B [A=outer side; B=inner side (thumbturn side)] [security and usage options]
- ▶ [finish]/GKN



FKN Flat Thumbturn



Functional characteristics

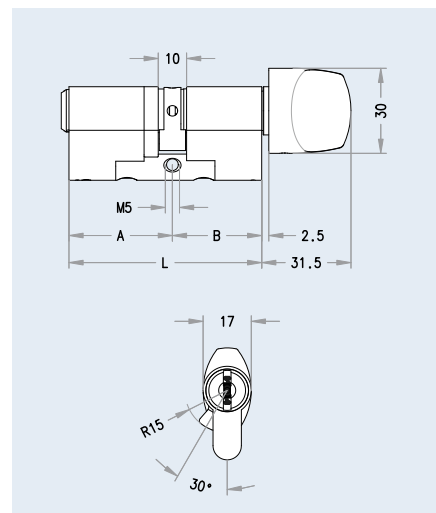
- ▶ Stylishly shaped, removable, flat thumbturn with 2 grip recesses
- ▶ Particularly suitable for the elderly and people with disabilities

Technical data

- ▶ Base material: brass
- ▶ Finishes: satin nickel plated, satin brushed, polished lacquer

Ordering information

- ▶ KZ cylinder length A/B [A=outer side; B=inner side (thumbturn side)] [security and usage options]
- ▶ [finish]/FKN



OKN Oval Thumbturn



Functional characteristics

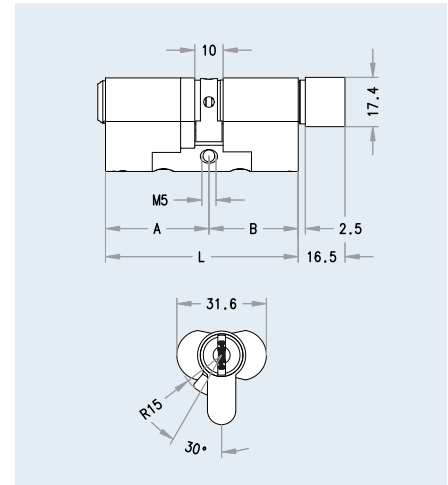
- Removable, horizontal, light metal thumbturn with two grip recesses

Technical data

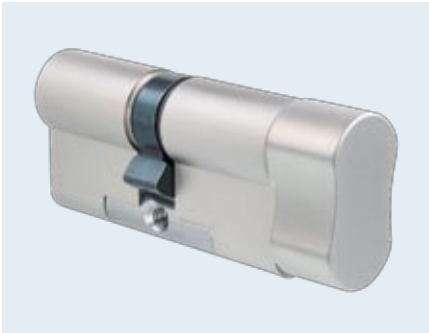
- Base material: aluminium
- Finishes: satin nickel plated, F2 anodized, F3 anodized, polished gold colour

Ordering information

- KZ cylinder length A/B [A=outer side; B=inner side (thumbturn side)] [security and usage options]
- [finish]/OKN



OKNA Asymmetric Oval Thumbturn



Functional characteristics

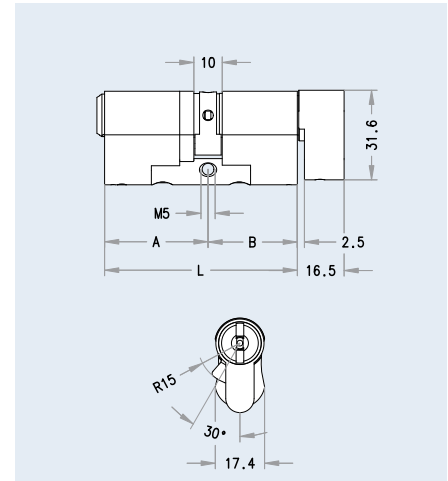
- Removable, vertical, light metal thumbturn with two grip recesses

Technical data

- Base material: aluminium
- Finishes: satin nickel plated, F2 anodized, F3 anodized, polished gold colour

Ordering information

- KZ cylinder length A/B [A=outer side; B=inner side (thumbturn side)] [security and usage options]
- [finish]/OKNA



Thumbturn Cylinders | Options



Thumbturn cylinder with SOS function

The key-operated cylinder side is equipped with a priority function. The cylinder can even be operated from the outside when manipulated (e.g. when the thumbturn is being held on the inside).

Further options

See DZ options

Ordering information

- ▶ cylinder length A/B, SOS (A=outer side; B=inner side (thumbturn side))
- ▶ [finish]/[thumbturn design]
- ▶ When thumbturn design is not specified: AKN standard thumbturn

Options overview

S = Standard

- Simple combination possible

		external key override	dust cover	sea water resistant	protection against breaking off	cylinder certified acc to VdS	cog wheel cam (10 teeth)	cog wheel cam (18 teeth)	Biffar double cam	star cam	shortened body	partner function	differing locking hierarchy	free wheel cam	four-eyes principle
		BSZ	SSW	SEW	ARS	VDS	ZR10	ZR18	BIF	STEN	ZVS	PA	USH	FREI	DUP
external key override	BSZ	-	-	-	-	-	-	-	-	-	-	-	-	-	-
dust cover	SSW	-	-	●	-	●	●	●	●	●	-	-	-	-	-
sea water resistant	SEW	-	●	-	-	●	●	●	●	●	●	-	-	-	-
protection against breaking off	ARS	-	-	-	-	-	-	-	-	-	-	-	-	-	-
cylinder certified acc to VdS	VDS	-	-	●	-	-	●	●	●	●	-	-	-	-	-
cog wheel cam (10 teeth)	ZR10	-	●	●	-	●	-	-	-	-	●	-	-	-	-
cog wheel cam (18 teeth)	ZR18	-	●	●	-	●	-	-	-	-	●	-	-	-	-
Biffar double cam	BIF	-	●	●	-	●	-	-	-	-	●	-	-	-	-
star cam	STEN	-	●	●	-	●	-	-	-	-	●	-	-	-	-
shortened body	ZVS	-	-	●	-	-	●	●	●	●	-	-	-	-	-
partner function	PA	-	-	-	-	-	-	-	-	-	-	-	-	-	-
differing locking hierarchy	USH	-	-	-	-	-	-	-	-	-	-	-	-	-	-
free wheel cam	FREI	-	-	-	-	-	-	-	-	-	-	-	-	-	-
four-eyes principle	DUP	-	-	-	-	-	-	-	-	-	-	-	-	-	-

HZ Half Cylinder



Ordering information

- HZ cylinder length A, [finish], [security and usage options]

Applications and usage

- For single-turn or multi-turn mortise locks and other locks with a profile cylinder hole
- Key switch
- Activating devices
- Garage doors and roller shutters fastened at the side

Functional characteristics

- Can be operated with a key on one side
- Cam rotation: 360 degrees
- Cam removal position: 45 degrees
- Cam can be set to 8 positions (45°, 90°, 135°, 180°, 225°, 270°, 315°, 360°)

Security features

- Hard metal drilling protection in plug and body
- Pulling protection through chrome-nickel connecting rod

Technical data

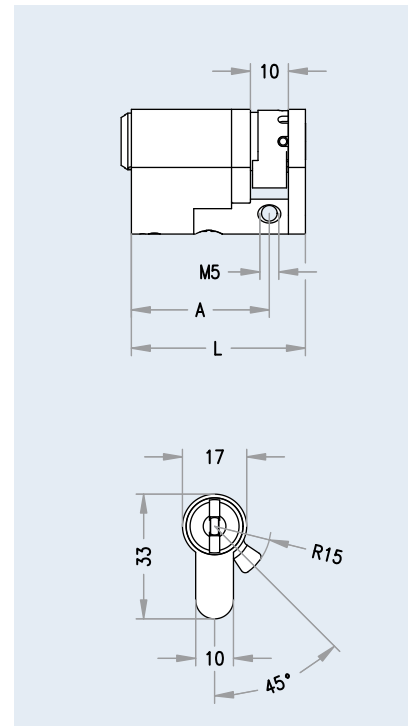
- Cylinder body base material: brass
- Cylinder plug base material: brass
- Cam home position: 45 degrees (changeable)
- Cam width: 9.3 mm
- Modular cylinder design

Scope of supply

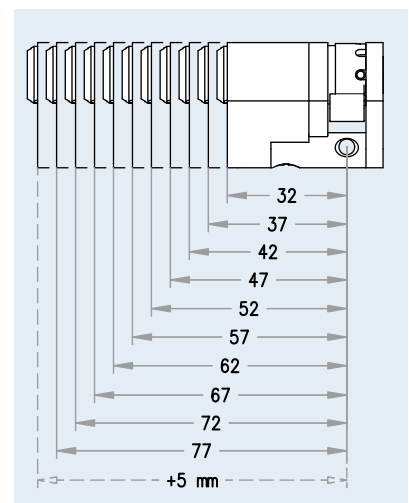
Half cylinder with fixing screw

Installation & operation

- Easy cylinder installation in a prepared, empty cylinder hole
- Cylinder should be flush with the escutcheon or rose
- Cylinder fixed through a M5 fastening hole



Cylinder lengths



Finishes

Finishes	Abbreviations	Standard	Surcharge
Polished brass	PB	●	
Satin nickel	NI	●	
Polished nickel	PN		○
Satin chrome	CR		○
Polished chrome	PC		○
Black	BL		○
Brown	BW		○
Satin brass	BR		○
PVD	PVD		○

HZ/S Half Cylinder



Ordering information

- ▶ HZ/S cylinder length A, [finish], [security and usage options]

Applications and usage

- ▶ Key switch
- ▶ Activating devices
- ▶ Garage doors, roller shutters, lifts, escalators where fastening is from rear

Functional characteristics

- ▶ Can be operated with a key on one side
- ▶ Cam rotation: 360 degrees
- ▶ Cam removal position: 30 degrees
- ▶ Cam can be set to 8 positions (45°, 90°, 135°, 180°, 225°, 270°, 315°, 360°)
- ▶ Fastened through two M4 threaded holes at the rear
- ▶ Fastened through one M5 threaded hole at the side

Security features

- ▶ Hard metal drilling protection in plug and body
- ▶ Pulling protection through chrome-nickel connecting rod

Technical data

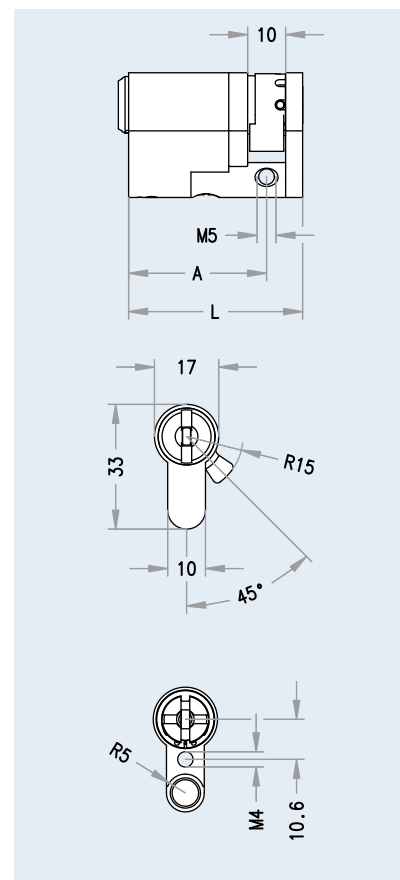
- ▶ Cylinder body base material: brass
- ▶ Cylinder plug base material: brass
- ▶ Cam home position: 45 degrees (changeable)
- ▶ Cam width: 9.3 mm
- ▶ Modular cylinder design

Scope of supply

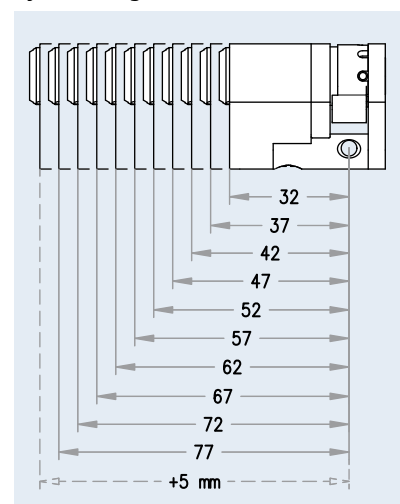
- ▶ Half cylinder with fixing screw

Installation & operation

- ▶ Easy cylinder installation in a prepared, empty cylinder hole
- ▶ Cylinder should be flush with the escutcheon or rose when closed
- ▶ Cylinder fixed through a M5 fastening hole (at the side)
- ▶ Cylinder fixed through two rear M4 fastening holes (not included in supply)



Cylinder lengths



Finishes

Finishes	Abbreviations	Standard	Surcharge
Polished brass	PB	●	
Satin nickel	NI	●	
Polished nickel	PN		○
Satin chrome	CR		○
Polished chrome	PC		○
Black	BL		○
Brown	BW		○
Satin brass	BR		○
PVD	PVD		○

RDZ Round Double Cylinder



Ordering information

- ▶ RDZ cylinder length A/B [finish] [security and usage options]

Applications and usage

- ▶ For mortise locks designed for round profile cylinders (Swiss profile)
- ▶ For house doors, connecting doors, apartment doors, security doors, metal frame doors and other doors

Functional characteristics

- ▶ Lockable on both sides with key
- ▶ Cam rotation: 360 degrees
- ▶ Cam removal position: 22.5 degrees (from the short side)

Security features

- ▶ Hard metal drilling protection in plug
- ▶ Vertical key insertion for optimal scanning of locking elements

Technical data

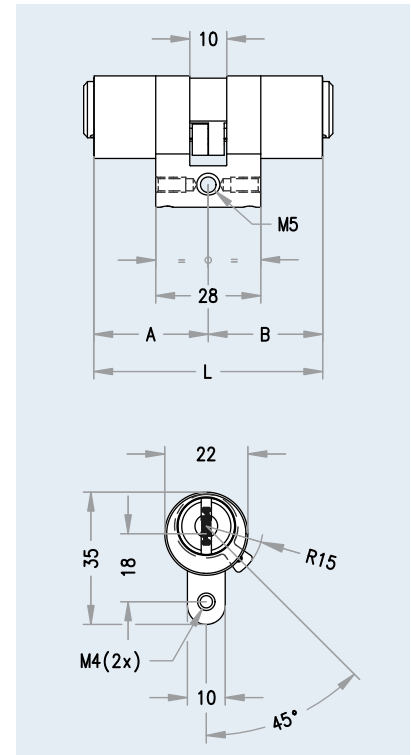
- ▶ Cylinder body base material: brass
- ▶ Cylinder plug base material: brass
- ▶ Cam home position: 22.5 degrees
- ▶ Cam width: 9.3 mm
- ▶ Compact design

Scope of supply

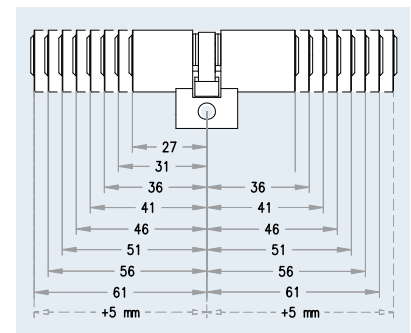
Locking cylinder with fixing screw

Installation & operation

- ▶ Easy cylinder installation in a prepared, empty cylinder hole
- ▶ Cylinder projecting length may not exceed 3 mm for security-relevant doors
- ▶ Cylinder fixed through a M5 fastening hole



Cylinder lengths



Finishes

Finishes	Abbreviations	Standard	Surcharge
Polished brass	PB	●	
Satin nickel	NI	●	
Polished nickel	PN		○
Satin chrome	CR		○
Polished chrome	PC		○
Black	BL		○
Brown	BW		○
Satin brass	BR		○
PVD	PVD		○

RKZ Round Thumbturn Cylinder



Ordering information

- ▶ RKZ cylinder length A/B (A=outer side; B=inner side (thumbturn side)), [finish], [security and usage options] When thumbturn design is not specified: AKN standard thumbturn

Applications and usage

- ▶ For mortise locks designed for round profile cylinders (Swiss profile)
- ▶ For house doors, connecting doors, apartment doors, security doors, metal frame doors and other doors

Functional characteristics

- ▶ Can be locked from the outside with a key
- ▶ Thumbturn on the inside to lock and unlock the door
- ▶ Cam rotation: 360 degrees

Security features

- ▶ Hard metal drilling protection in the outside plug and body
- ▶ Vertical key insertion for optimal scanning of locking elements

Technical data

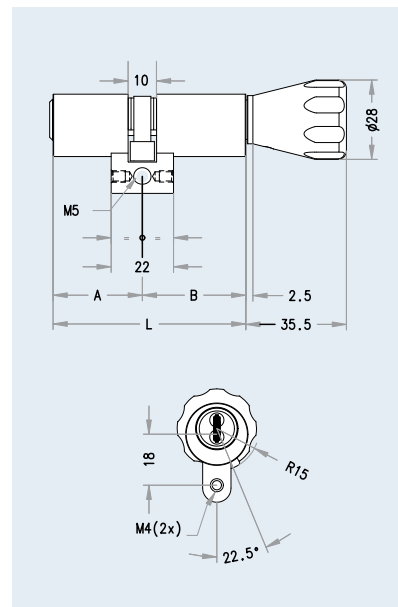
- ▶ Cylinder body base material: brass
- ▶ Cylinder plug base material: brass
- ▶ Cam home position: 22.5 degrees
- ▶ Cam width: 9.3 mm
- ▶ Compact cylinder design

Scope of supply

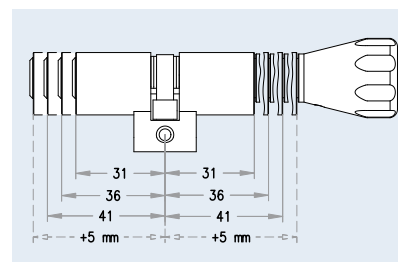
- ▶ Locking cylinder with thumbturn and fixing screw

Installation & operation

- ▶ Easy cylinder installation in a prepared, empty cylinder hole
- ▶ Cylinder projecting length may not exceed 3 mm for security-relevant doors
- ▶ If required, inside thumbturn can be removed with a tool and replaced with another EVVA thumbturn
- ▶ Cylinder fixed through a M5 fastening hole



Cylinder lengths



Finishes

Finishes	Abbreviations	Cylinder	AKN, KKN, FKN	RKN, MKN	OKN, OKVA	GKN
Polished brass	PB	●	●	●	●	●
Satin nickel	NI	●	●	●	●	●
Polished nickel	PN	○	○	○	○	○
Satin chrome	CR	○	○	○	○	○
Polished chrome	PC	○	○	○	○	○
Black	BL	○	○	○	○	○
Brown	BW	○	○	○	○	○
Satin brass	BR	○	○	○	○	○
PVD	PVD	○	○	○	○	○
RAL colours	RAL					○
F2 anodized	F2				○	
F3 anodized	F3				○	

- Standard
- Surcharge

RHZ Round Half Cylinder



Ordering information

- RHZ cylinder length A
[finish], [security and usage options]

Applications and usage

- For single-turn or multi-turn mortise locks designed for round profile cylinders (Swiss profile)
- Key switches designed for round profile cylinders
- Activating devices
- Garage doors, roller shutters

Functional characteristics

- Can be operated with a key on one side
- Cam rotation: 360 degrees
- Cam removal position: 45 degrees
- Cam can be set to 8 positions (45°, 90°, 135°, 180°, 225°, 270°, 315°, 360°)

Security features

- Hard metal drilling protection in plug

Technical data

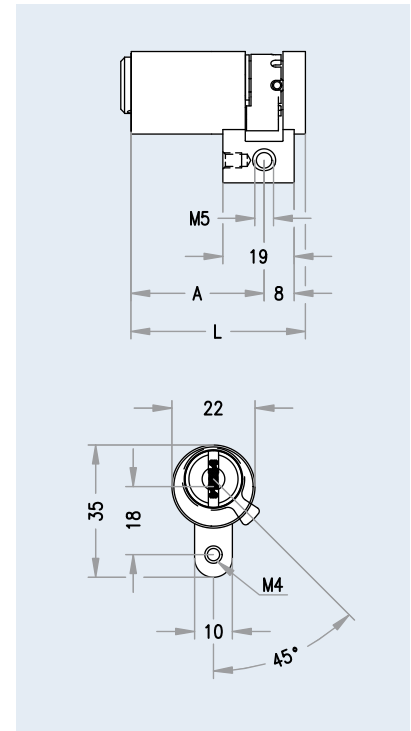
- Cylinder body base material: brass
- Cylinder plug base material: brass
- Cam home position: 45 degrees (adjustable to 8 positions)
- Cam width: 9.3 mm
- Compact cylinder design

Scope of supply

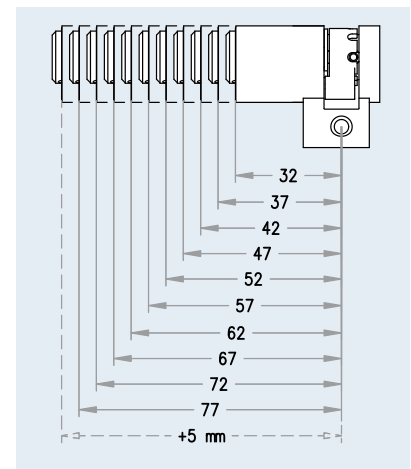
Round half cylinder with fixing screw

Installation & operation

- Easy cylinder installation in a prepared, empty cylinder hole
- Cylinder should be flush with the escutcheon or rose
- Cylinder fixed through a M5 fastening hole



Cylinder lengths



Finishes

Finishes	Abbreviations	Standard	Surcharge
Polished brass	PB	●	
Satin nickel	NI	●	
Polished nickel	PN		○
Satin chrome	CR		○
Polished chrome	PC		○
Black	BL		○
Brown	BW		○
Satin brass	BR		○
PVD	PVD		○

HPM Padlock



Ordering information

- ▶ HPM (standard: hardened steel shackle)

Applications and usage

- ▶ Elements and containers secured with a hasp
- ▶ Roller shutters
- ▶ Barrier systems
- ▶ Chain barriers
- ▶ Security fences

Functional characteristics

- ▶ Secures elementary fastening devices
- ▶ Padlock with round security shackle
- ▶ Operated on lower surface
- ▶ Locking rotation: 90 degrees
- ▶ Key can only be removed when locked

Security features

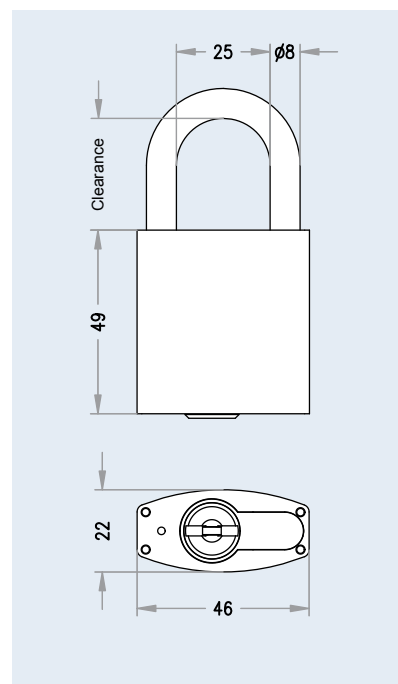
- ▶ Hard metal drilling protection in plug and body
- ▶ Positively driven locking of the security shackle

Technical data

- ▶ Padlock base material: brass, satin nickel plated
- ▶ Shackle made of hardened, chemically nickel plated steel or stainless steel
- ▶ Shackle diameter: 8 mm
- ▶ Standard shackle: clearance height: 30 mm
clearance width: 25 mm

Installation & operation

- ▶ Can be used with any hasp with an opening > 8 mm



HPM BS Padlock



Ordering information

- ▶ HPM BS (standard: hardened steel shackle)

Applications and usage

- ▶ Elements and containers secured with a hasp
- ▶ Roller shutters
- ▶ Barrier systems
- ▶ Chain barriers
- ▶ Security fences

Functional characteristics

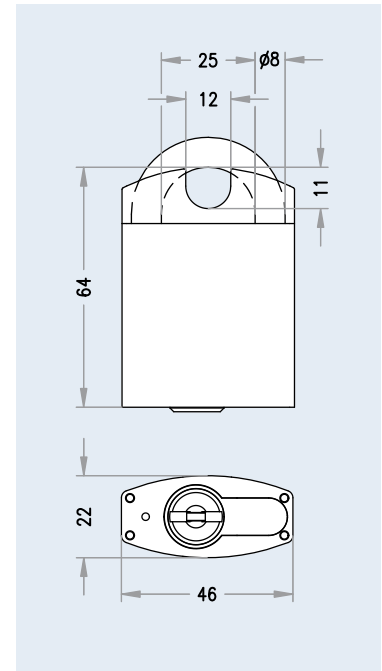
- ▶ Secures elementary fastening devices
- ▶ Padlock with round security shackle
- ▶ Operated on lower surface
- ▶ Locking rotation: 90 degrees
- ▶ Key can only be removed when locked

Security features

- ▶ Hard metal drilling protection in plug and body
- ▶ Positively driven locking of the security shackle
- ▶ Hardened steel shackle protection

Technical data

- ▶ Padlock base material: brass, satin nickel plated
- ▶ Shackle made of hardened, chemically nickel plated steel
- ▶ Shackle diameter: 8 mm
- ▶ Standard shackle: clearance height: 15 mm
clearance width: 12 mm



Installation & operation

- ▶ Can be used with any hasp with an opening > 8 mm

HPM SSW Padlock With Dust Cover



Ordering information

- ▶ HPM SSW (standard: hardened steel shackle),
- ▶ shackle made of stainless steel on request

Applications and usage

- ▶ Elements and containers secured with a hasp
- ▶ Roller shutters
- ▶ Barrier systems
- ▶ Chain barriers
- ▶ Security fences

Functional characteristics

- ▶ Operated on lower surface
- ▶ Locking rotation: 90 degrees
- ▶ Key can only be removed when locked
- ▶ With dust cover

Security features

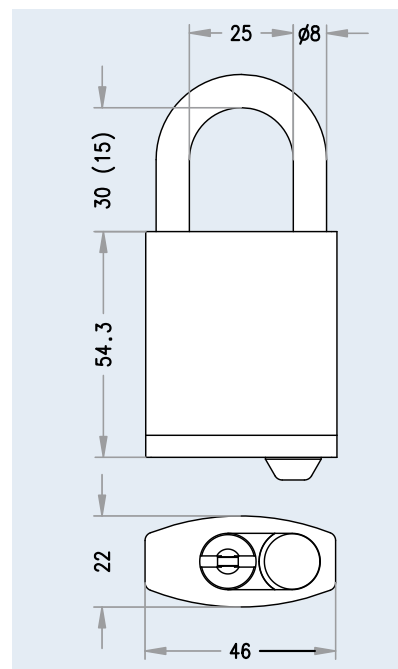
- ▶ Hard metal drilling protection in plug and body
- ▶ Positively driven locking of the security shackle

Technical data

- ▶ Padlock base material: brass, satin nickel plated
- ▶ Shackle made of hardened, chemically nickel plated steel or stainless steel
- ▶ Shackle diameter: 8 mm
- ▶ Standard shackle: clearance height: 30 mm
clearance width: 25 mm
- ▶ Dust cover

Installation & operation

- ▶ Can be used with any hasp with an opening > 8 mm



HPM Padlock With Extra Long Shackle



Ordering information

- ▶ HPM Shackle LH xx (shackle in LH design always made of stainless steel)

Applications and usage

- ▶ To secure vertically positioned hasps or fasteners
- ▶ Roller shutters
- ▶ Chain barriers
- ▶ Security fences

Functional characteristics

- ▶ Secures elementary fastening devices
- ▶ Padlock with round security shackle
- ▶ Operated on lower surface
- ▶ Locking rotation: 90 degrees
- ▶ Key can only be removed when locked

Security features

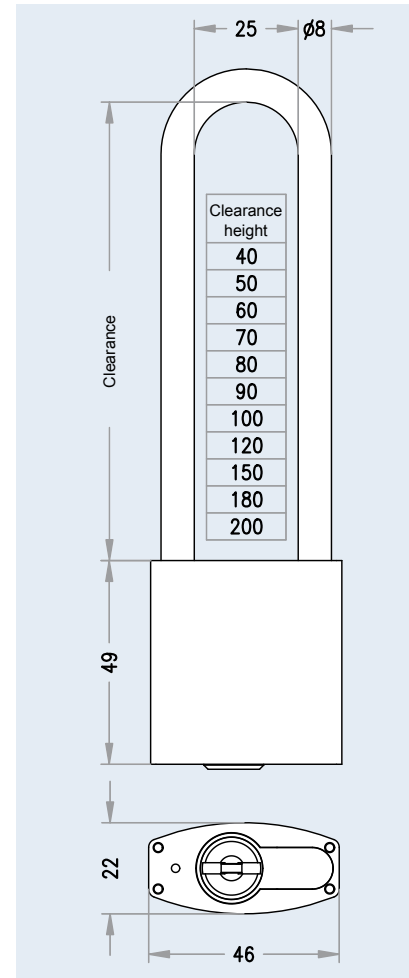
- ▶ Hard metal drilling protection in plug and body
- ▶ Positively driven locking of the security shackle

Technical data

- ▶ Padlock base material: brass, satin nickel plated
- ▶ Shackle made of hardened, chemically nickel plated steel or stainless steel
- ▶ Shackle diameter: 8 mm

Installation & operation

- ▶ Can be used with any hasp with an opening > 8 mm



MB23 G Cam Lock



Ordering information

- ▶ MB23 [finish], [cam]; if the standard cam is used, no further information is necessary

Applications and usage

- ▶ Wooden and sheet metal boxes
- ▶ Mailboxes with medium cylinder hole
- ▶ Showcase locks
- ▶ Emergency key boxes
- ▶ Key cabinets
- ▶ Wardrobes/lockers
- ▶ Cabinets

Functional characteristics

- ▶ Locking by cam
- ▶ Locking rotation: 90 degrees
- ▶ Key can only be removed in closed position
- ▶ Flat side finishes prevent rotation
- ▶ Cylinder fixed at rear with a hex nut (AF 27)
- ▶ Standard cam: 33.5 mm

Security features

- ▶ Flat finishes on both cylinder sides prevent rotation

Technical data

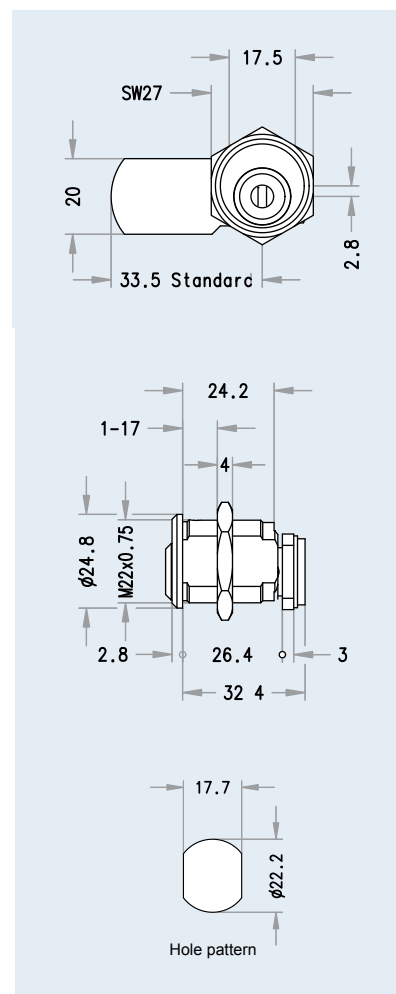
- ▶ Cylinder front face $\varnothing 24.8$ mm
- ▶ With M22 threads for AF 27 fastening nut
- ▶ Base material: brass
- ▶ Steel cam, blue galvanised

Scope of supply

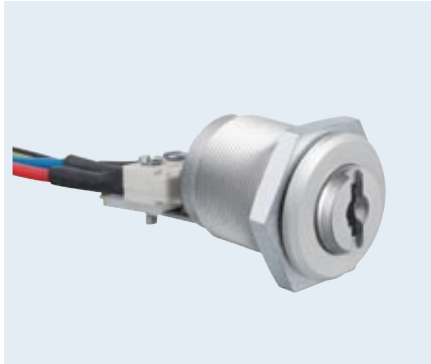
- ▶ Locking cylinder with standard cam 5072, 33.5 mm
- ▶ M22 fastening nut

Installation & operation

- ▶ For material thicknesses up to 17 mm
- ▶ Cylinder hole $\varnothing 23$, flattened to 17.7 mm
- ▶ Cam secured by two rear screws



MB23SZ Switch Cylinder



Ordering information

- MB23SZ [finish]

Applications and usage

- As switch cylinder with integrated switch element
- For direct activation of circuits
- Pulse switch

Functional characteristics

- Locking rotation: 90 degrees
- On/off switch function
- Key can only be removed in one position

Technical data

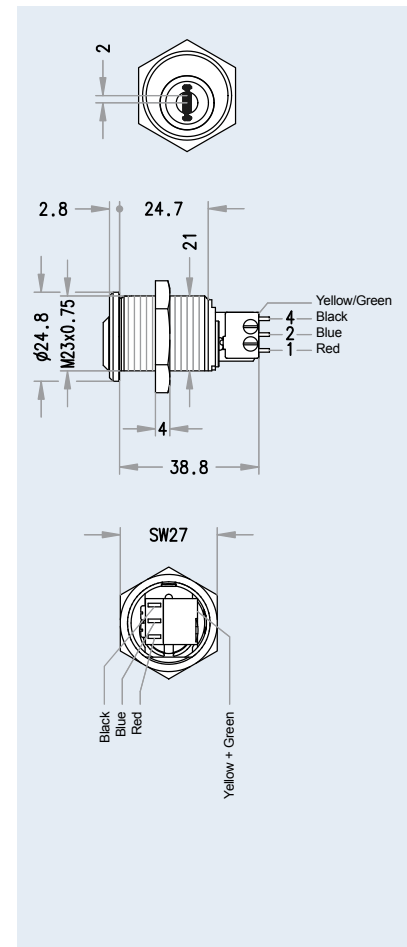
- Cylinder front face Ø 24.8 mm
- M23 threads for WS27 fastening nut
- Base material: brass
- F4 T7 Switch element
- With earth connection

Scope of supply

- Locking cylinder with switch elements and connecting cable
- AF 27 fastening nut

Installation & operation

- For material thicknesses up to 14 mm
- Cylinder hole Ø 23, flattened on one side to 17.7 mm
- Electrical connection must be performed by a professional



MB23GT Cam Lock For Glass Doors



Ordering information

- ▶ MB23 [finish], [cam], [fastening plate]; if the standard cam is used, no further information is necessary

■ Applications and usage

- ▶ Glass showcase locks
- ▶ Glass door cupboards

■ Functional characteristics

- ▶ Locking by cam
- ▶ Locking rotation: 90 degrees
- ▶ Key can only be removed in closed position
- ▶ Flat side finishes prevent rotation
- ▶ Cylinder fixed at rear with a hex nut (AF 27)
- ▶ Standard cam: 33.5 mm
- ▶ Bevelled fastening plate

■ Security features

- ▶ Flat finishes on both cylinder sides prevent rotation

■ Technical data

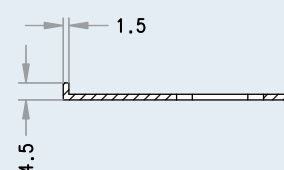
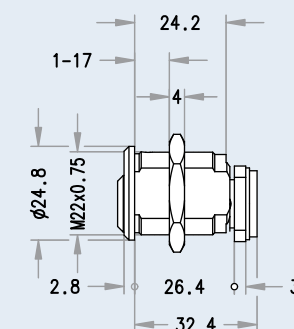
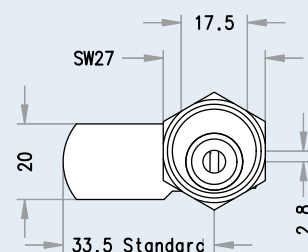
- ▶ Cylinder front face Ø 24.8 mm
- ▶ M22 threads for AF 27 fastening nut
- ▶ Base material: brass
- ▶ Steel cam, blue galvanised
- ▶ Brushed aluminium fastening plate

■ Scope of supply

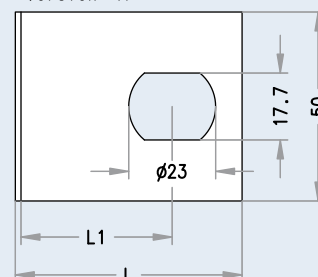
- ▶ Locking cylinder with standard cam
5072, 33.5 mm
- ▶ M22 fastening nut
- ▶ Fastening plate
- ▶ Plastic disc

■ Installation & operation

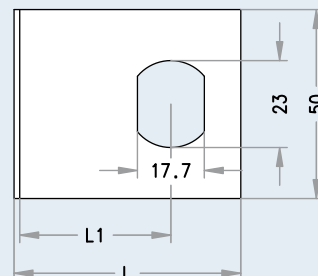
- ▶ For material thicknesses up to 17 mm
- ▶ Cylinder hole Ø 23, flattened to 17.7 mm
- ▶ Cam secured by two rear screws
- ▶ Plastic disc to protect glass



Version 'A'



Version 'B'



	A1	B1	A2	B2	A3	B3	A4	B4	A5	B5	A6	B6
L	50	50	50	50	55	55	60	60	65	65	70	70
L1	25	25	30	30	35	35	40	40	45	45	50	50

ZB27 Cam Lock



Ordering information

- ▶ ZB27 [finish], [cam]; if the standard cam is used, no further information is necessary

Applications and usage

- ▶ Wooden and sheet metal boxes
- ▶ Mailboxes with large cylinder hole
- ▶ Mailbox systems with large cylinder hole
- ▶ Electric junction boxes
- ▶ Fuse boxes

Functional characteristics

- ▶ Locking by cam
- ▶ Cam rotation: 90 degrees
- ▶ Key can only be removed in closed position
- ▶ Cylinder fixed by rear clamp plate
- ▶ Standard cam 5072, 33.5 mm

Technical data

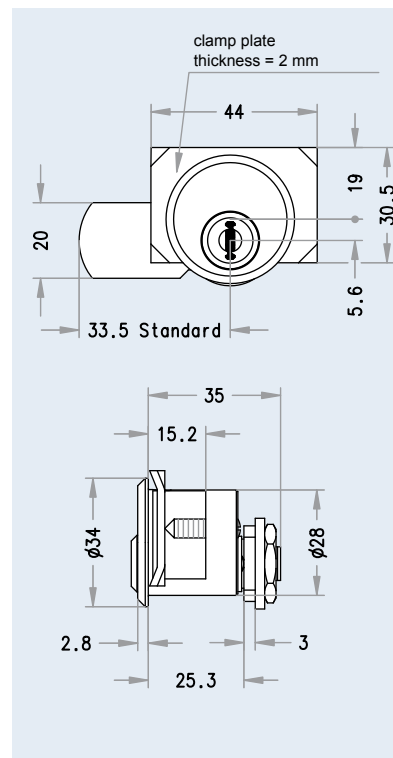
- ▶ Cylinder front face Ø 34 mm without rose, 50 mm with rose
- ▶ Base material: brass
- ▶ Steel cam, blue galvanised

Scope of supply

- ▶ Locking cylinder with standard cam 5072, 33.5 mm, without rose

Installation & operation

- ▶ For material thicknesses between 1 and 8.5 mm (without rose)



ZB27K Cam Lock



Ordering information

- ZB27K [finish], [cam]; if the standard cam is used, no further information is necessary

Applications and usage

- Wooden and sheet metal boxes
- Electric junction boxes in outdoor areas
- Fuse boxes in outdoor areas

Functional characteristics

- Locking by cam
- Locking rotation: 90 degrees
- Key can only be removed in closed position
- Cylinder fixed by rear clamp plate
- Standard cam 5072, 33.5 mm
- With dust cover

Technical data

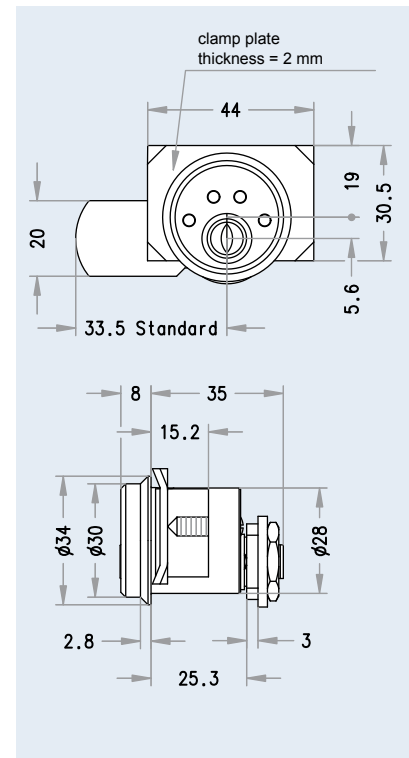
- Cylinder front face \varnothing 34 mm without rose, 50 mm with rose
- Base material: brass
- Steel cam, blue galvanised

Scope of supply

- Lock cam with standard cam 5072, 33.5 mm; dust cover, without rose

Installation & operation

- For material thicknesses between 1 and 8.5 mm (without rose)
- Cam secured by two rear screws



HMB Euro Profile Cam Lock



Ordering information

- ▶ HMB, right/left specification necessary [finish], [cam]; if the standard cam is used, no further information is necessary

Applications and usage

- ▶ Wooden cupboards
- ▶ Showcase locks

Functional characteristics

- ▶ Locking by cam
- ▶ Locking rotation: 90 degrees
- ▶ Key can only be removed in closed position
- ▶ Cylinder fixed by rear fastening plate with end-stop
- ▶ Standard cam, 37.5 mm, heavy-duty design

Security features

- ▶ Hard metal elements to prevent drilling into plug

Technical data

- ▶ Base material: brass
- ▶ Heavy-duty cam
- ▶ Steel cam and fastening plate, blue galvanised

Scope of supply

- ▶ Locking cylinder with standard cam, 37.5 mm, heavy-duty design
- ▶ With fastening plate
- ▶ Without rose

Installation & operation

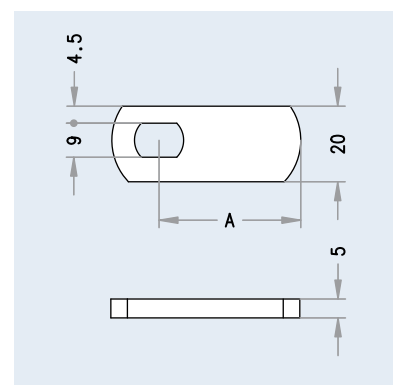
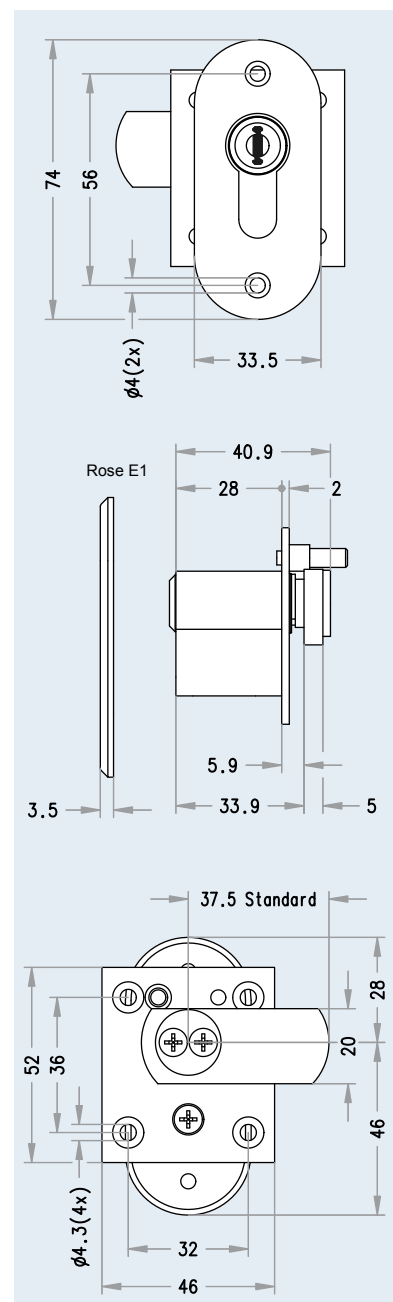
- ▶ For material thicknesses up to 28 mm
- ▶ Euro profile cylinder hole
- ▶ Cam secured by two rear screws
- ▶ Cylinder fixed by four screws

Applications and usage

- ▶ For HMB cam lock

Technical data

- ▶ Standard design A=37.5mm
- ▶ Special lengths: A= 45, 50, 60, 70, 80mm



Cam in HMB cam lock

MRT25 / MRL25 Furniture Cylinder



Ordering information

- ▶ MRT25/31, [finish], [lock case type]
- ▶ MRT25/36, [finish], [lock case type]
- ▶ MRL25/31, [finish]
- ▶ MRL25/36, [finish]

Applications and usage

- ▶ With Universal 4000 screw-on bolt lock for single locking
- ▶ For cabinet doors
- ▶ For cupboard doors
- ▶ With Universal 4540 espagnolette lock for multiple locking
- ▶ For cabinet doors with wide height clearance
- ▶ For cupboard doors with wide height clearance

Functional characteristics

- ▶ Locking rotation: 360 degrees
- ▶ Rear fixing screws for attachment to Universal 4000 screw-on bolt lock (configured for door design)
- ▶ ZVS Universal 4000 screw-on central lock
- ▶ Universal 4540 espagnolette lock

Technical data

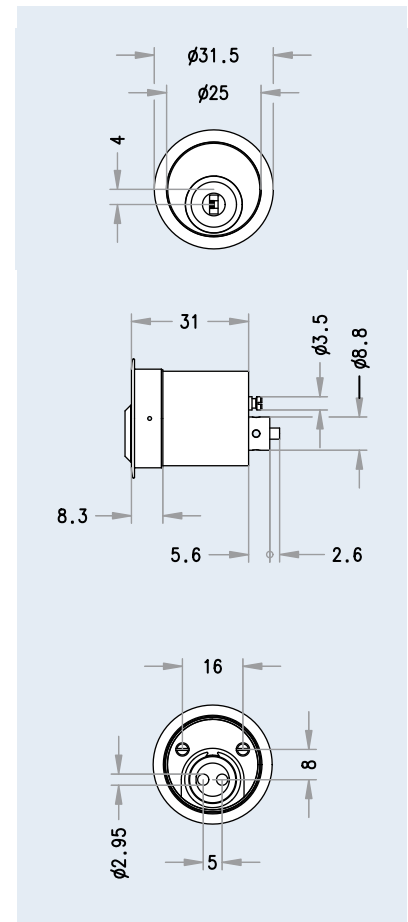
- ▶ Cylinder front face \varnothing 25 mm without rose
- ▶ Standard cylinder length: 31 mm
- ▶ Base material: brass

Scope of supply

- ▶ MRT25 round furniture cylinder with rose, designed for Universal 4000 lock cases (door design), Universal 4540

Installation & operation

- ▶ Universal clamp fixation to lock cases
- ▶ Easily retrofitted to lock cases



MR25/31 ESP MR25/36 ESP Furniture Cylinder



Ordering information

- ▶ MRT25/31 ESP, [finish], [lock case type]
- ▶ MRT25/36 ESP, [finish], [lock case type]
- ▶ MRL25/31 ESP, [finish]
- ▶ MRL25/36 ESP, [finish]

Applications and usage

- ▶ Screw-on cylinder for Universal 4525 espagnolette lock
- ▶ Screw-on furniture cylinder for Universal 4525 lock case

Technical data

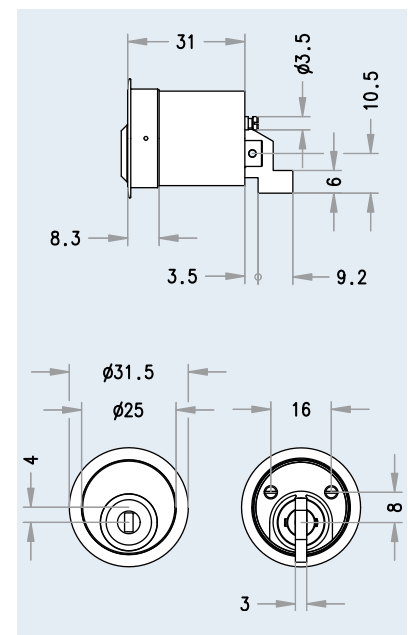
- ▶ Cylinder front face \varnothing 25 mm without rose
- ▶ Standard cylinder length: 31 mm
- ▶ Base material: brass

Scope of supply

- ▶ MRT25 round furniture cylinder with rose, designed for Universal 4525 lock cases

Installation & operation

- ▶ Universal clamp fixation to lock cases
- ▶ Easily retrofitted to lock cases



ZVZ25 Central Lock Cylinder



Ordering information

- ▶ ZVZ25 [cylinder length], [finish]

Applications and usage

- ▶ To lock drawers
(12 mm stroke)

Functional characteristics

- ▶ Bolt rotation: 180 degrees
- ▶ Locking rotation: 360 degrees
- ▶ Key can be removed in open and closed position
- ▶ Cylinder fixed by rear mounting plate

Technical data

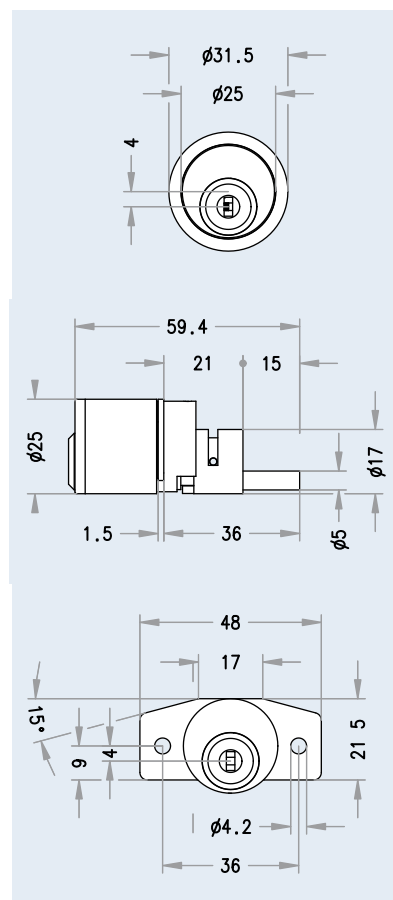
- ▶ Cylinder front face Ø 25 mm without rose
- ▶ Base material: brass

Scope of supply

- ▶ Central lock cylinder with rose

Installation & operation

- ▶ For material thicknesses up to 21.9 mm
- ▶ Fixed at rear with mounting plate
- ▶ Cylinder can be used right/left



DRZ28 Push-in Cylinder



Ordering information

- DRZ28, [finish]

Applications and usage

- To lock sliding doors

Functional characteristics

- Bolt stroke: 12 mm
- Locked without key
- Unlocked with key
- Cylinder fixed with integrated mounting plate
- Locked by pressing on the cylinder

Technical data

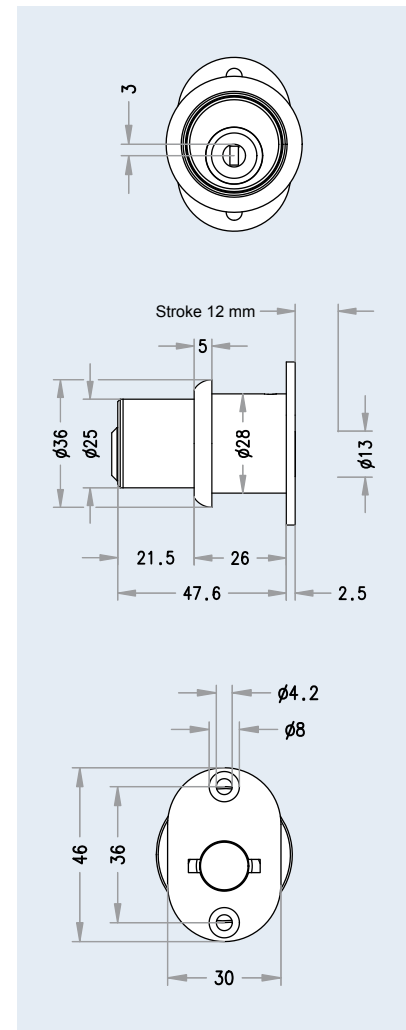
- Cylinder front face \varnothing 25 mm without rose
- Cylinder length: 28.5 mm
- Base material: brass

Scope of supply

- Push-in cylinder with rose

Installation & operation

- Fixed at rear, integrated mounting plate



Universal 4000 Screw-on Furniture Lock



Ordering information

- Universal 4000

Applications and usage

Screw-on furniture lock for:

- Furniture doors
- Cabinet doors
- Shutters

Functional characteristics

- Preset backset for doors: 25, 30 and 35 mm
- Preset backset for shutters: 20, 25 and 30 mm
- Can be used on both left and right on shutters and doors

Security features

- Solid lock case design
- Double bolt stroke (5 mm and 10 mm)

Technical data

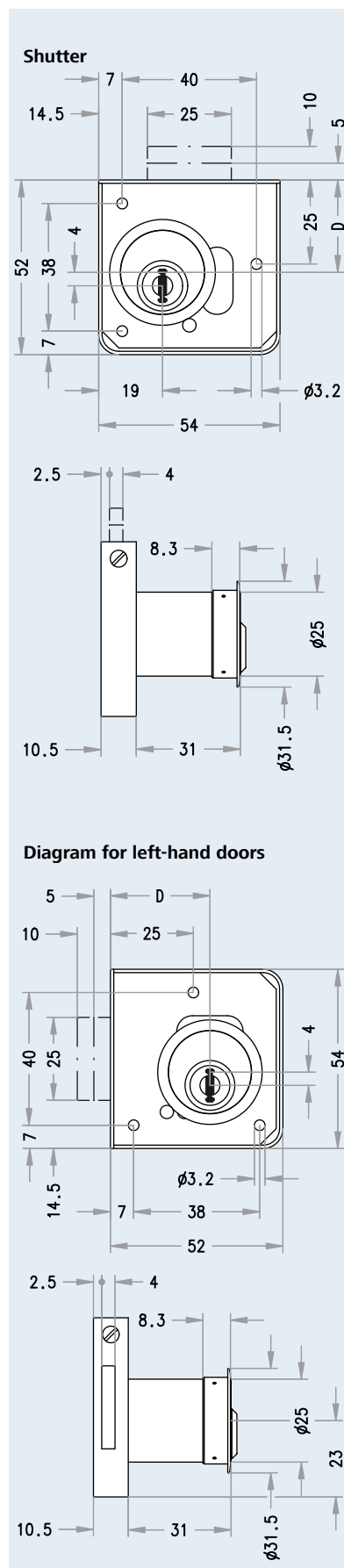
- Compact installation dimensions: 52 x 54 mm
- Fixed to door or shutter with three screws
- Adjustable backset
- Lock case and bolt made of nickel-plated iron

Scope of supply

- Lock Case Universal 4000, without fastening material, without locking plate

Installation & operation

- Universal clamp fastening attached onto the lock case with side screws
- Easily retrofitted to lock cases, even if lock cases have already been installed



Universal 4540 Espagnolette Lock For Furniture



Ordering information

- Universal 4540 with MRT/MRL 25

Applications and usage

Espagnolette lock for furniture such as

- Tall furniture doors and
 - Tall cupboard doors
- which require more than just locking due to their structure

Functional characteristics

- Backset: 40 mm (D)
- Designed for full-length, 8 mm espagnolette
- Single rotation

Security features

- Solid lock case design
- Single rotation, 12 mm bolt stroke

Technical data

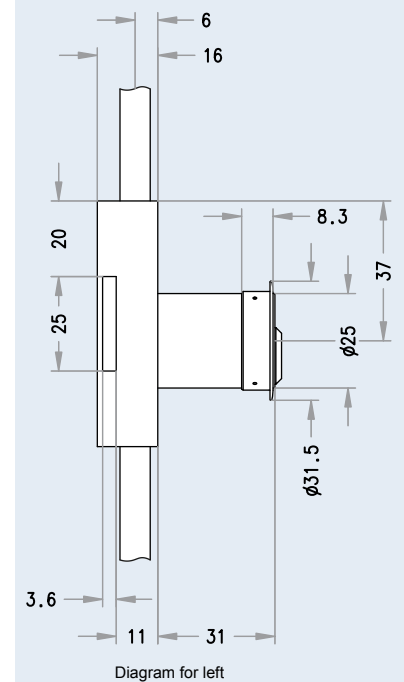
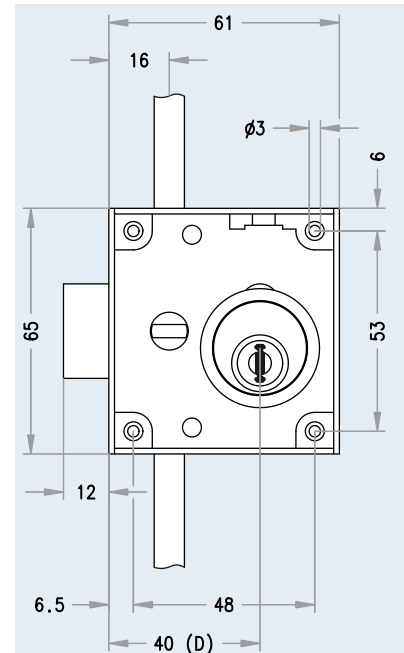
- Compact installation dimensions: 61 x 65 mm
- Fixed with four screws
- Nickel-plated lock case and bolt
- Designed for 8 mm rotary bars, flattened to 7 mm

Scope of supply

- Universal 4540 lock case
- Accessories:
- 2 hook bolts
- 1 angled strike plate
- 2 joint bolts
- Rod guide

Installation & operation

- Universal clamp fastening attached onto the lock case with side screws
- Easily retrofitted to lock cases, even if lock cases have already been installed



MAR Cabinet Bolt Lock



Ordering information

- MAR with MR25

Applications and usage

Cabinet bolt lock for simple locking of:

- Shutters
- Cabinet doors
- Cupboards

Functional characteristics

- Single rotation
- Designs: right/left and for shutters
- 10 mm bolt stroke

Security features

- Solid lock case design
- Single rotation, 10 mm bolt stroke

Technical data

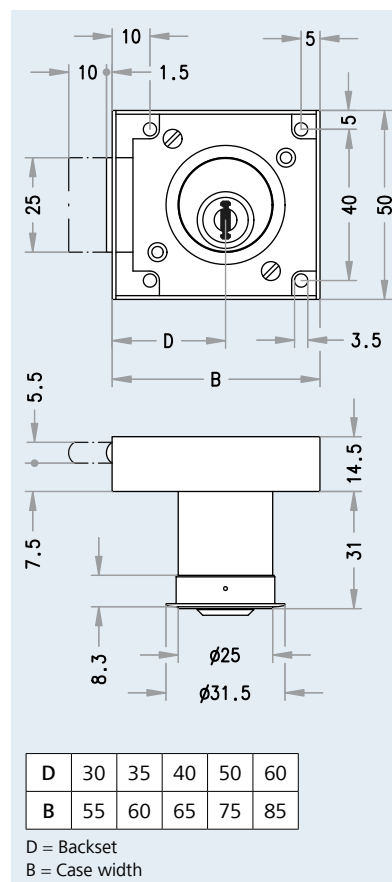
- Lock case: bronzed

Scope of supply

- Lock case without accessories, without fastening material

Installation & operation

- Easy installation with four screws



MER Cabinet Bolt Lock



Ordering information

- MER left/right and for shutter [backset]

Applications and usage

Cabinet bolt lock for simple locking of:

- Shutters
- Cabinet doors
- Cupboards

Functional characteristics

- For flush mount in cabinet doors/shutters
- Single rotation
- Designs: right/left and for shutters
- 11 mm bolt stroke

Security features

- Solid lock case design
- Single-rotation, 11 mm bolt stroke

Technical data

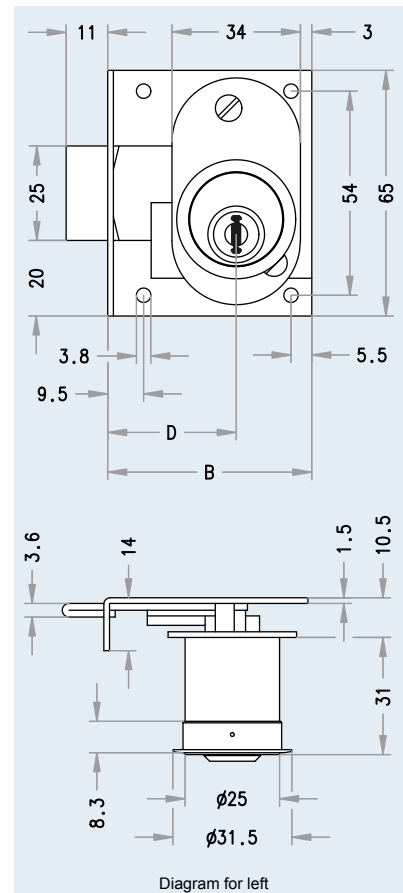
- Lock case of galvanized steel

Scope of supply

- Lock case without accessories, without fastening material

Installation & operation

- For installation into pre-milled lock recess



D	B
29	49
34	54
39	59
49	69
59	79

D = Backset
B = Case width

AZ Rim Cylinder



Ordering information

- ▶ AZ [finish]

Applications and usage

- ▶ Designed for EVVA series K900 and K9000 security rim locks

Functional characteristics

- ▶ Locking rotation: 360 degrees
- ▶ Tail bar can be shortened at 5 mm spaced nicks

Security features

- ▶ Hard metal drilling protection in plug and body
- ▶ Steel balls provide drilling protection for the cylinder fixing screws
- ▶ Vertical key insertion for optimal scanning of locking elements

Technical data

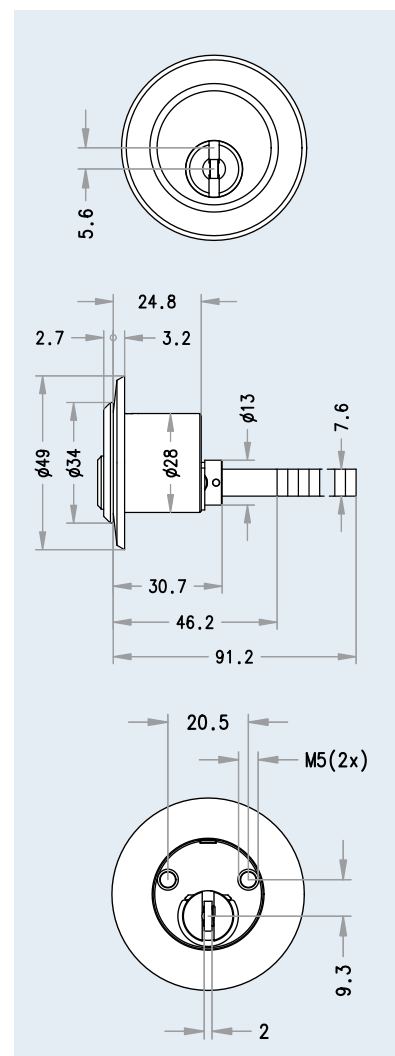
- ▶ Cylinder body base material: brass
- ▶ Cylinder plug base material: brass
- ▶ Tail bar for door thicknesses up to 50 mm
- ▶ Cylinder Ø 34 mm
- ▶ Rose Ø 50 mm

Scope of supply

- ▶ Round cylinder with standard rose and
- ▶ Two M5 x 40 fixing screws

Installation & operation

- ▶ Easy cylinder installation in prepared round hole
- ▶ Cylinder fixed through two M5 fastening holes
- ▶ Cylinder screws with pointed tips to make installation easier



AZG Rim Cylinder



Ordering information

- AZG [finish]

Applications and usage

For third-party products such as rim locks

Functional characteristics

- Locking rotation: 360 degrees
- Tail bar can be shortened at 5 mm spaced nicks

Security features

- Hard metal drilling protection in plug and body
- Steel balls provide drilling protection for the cylinder fixing screws
- Vertical key insertion for optimal scanning of locking elements

Technical data

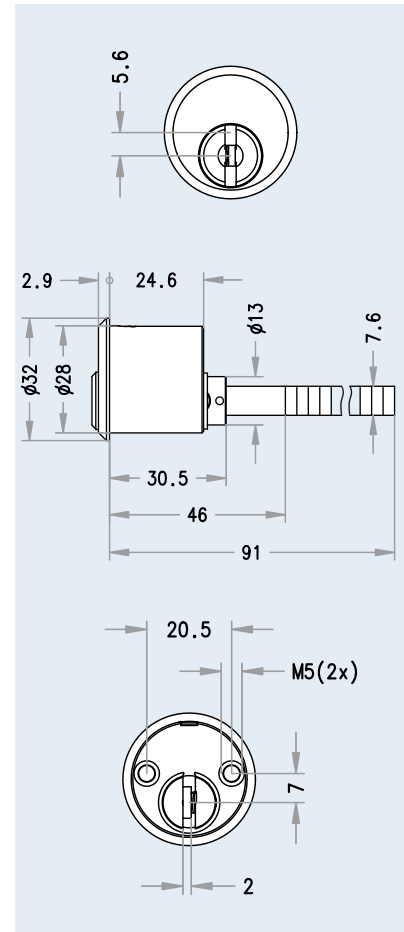
- Cylinder body base material: brass
- Cylinder plug base material: brass
- Tail bar for door thicknesses up to 80 mm
- Cylinder Ø 34 mm

Scope of supply

- Round cylinder with two M5 x 40 fixing screws

Installation & operation

- Easy cylinder installation in prepared round hole
- Cylinder fixed through two M5 fastening holes
- Cylinder screws with pointed tips to make installation easier



AZI Rim Cylinder



Ordering information

- ▶ AZI M5 [finish]
- ▶ AZI M6 [finish]

Applications and usage

- ▶ For rim locks of various manufacturers

Functional characteristics

- ▶ Locking rotation: 360 degrees
- ▶ Tail bar can be shortened at 5 mm spaced nicks

Security features

- ▶ Hard metal drilling protection in plug and body
- ▶ Steel balls provide drilling protection for the cylinder fixing screws
- ▶ Vertical key insertion for optimal scanning of locking elements

Technical data

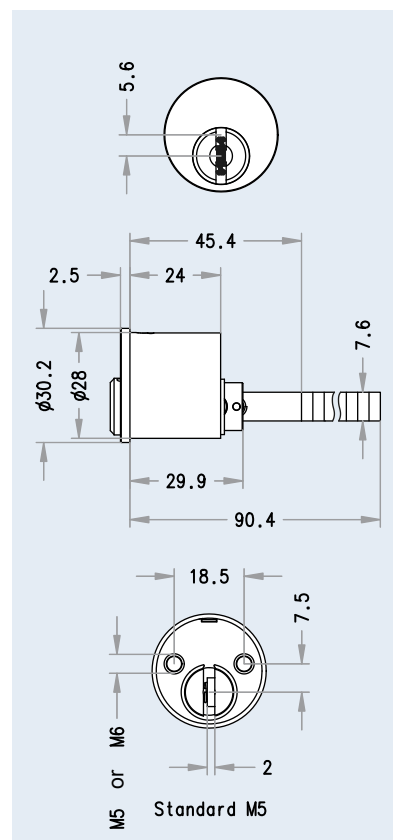
- ▶ Cylinder body base material: brass
- ▶ Cylinder plug base material: brass
- ▶ Tail bar for door thicknesses up to 80 mm
- ▶ Cylinder Ø 34 mm
- ▶ Rose Ø 50 mm

Scope of supply

- ▶ Round cylinder with rose and
- ▶ Two M5 x 40 fixing screws

Installation & operation

- ▶ Easy cylinder installation in prepared round hole
- ▶ Cylinder fixed through two M5 or M6 fastening holes
- ▶ Cylinder screws with pointed tips to make installation easier



AZ4050 Rim Cylinder



Ordering information

- AZ [finish]

Applications and usage

- Designed for rim locks .131, .132, .133, .136

Functional characteristics

- Locking rotation: 360 degrees
- Tail bar can be shortened at 5 mm spaced nicks

Security features

- Hard metal drilling protection in plug and body
- Steel balls provide drilling protection for the cylinder fixing screws
- Vertical key insertion for optimal scanning of locking elements

Technical data

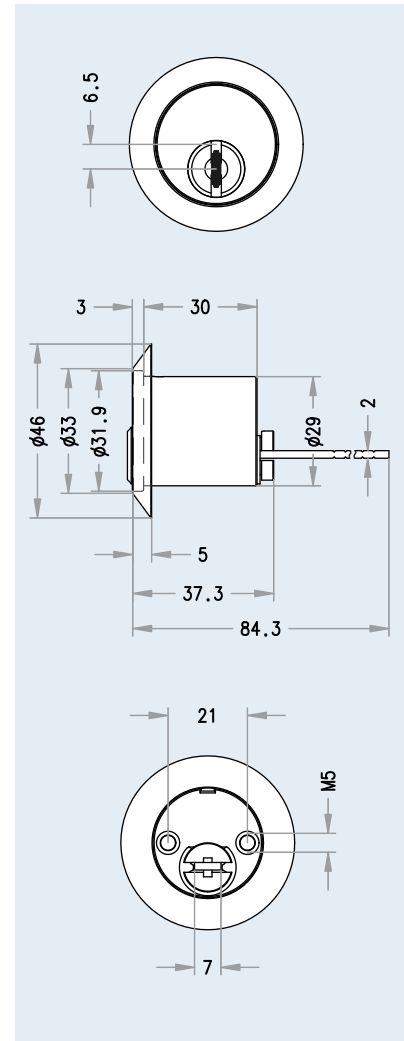
- Cylinder body base material: brass
- Cylinder plug base material: brass
- Tail bar for door thicknesses between 40 and 70 mm
- Cylinder Ø 34 mm
- Rose Ø 50 mm

Scope of supply

- Round cylinder with rose and two M5 x 40 fixing screws

Installation & operation

- Easy cylinder installation in prepared round hole
- Cylinder fixed through two M5 fastening holes
- Cylinder screws with pointed tips to make installation easier



AZ 4063 Rim Cylinder



Ordering information

- AZ [finish]

Applications and usage

- Designed for case locks .133, .136

Functional characteristics

- Locking rotation: 360 degrees
- Tail bar can be shortened at 5 mm spaced nicks

Security features

- Hard metal drilling protection in plug and body
- Steel balls provide drilling protection for the cylinder fixing screws
- Vertical key insertion for optimal scanning of locking elements

Technical data

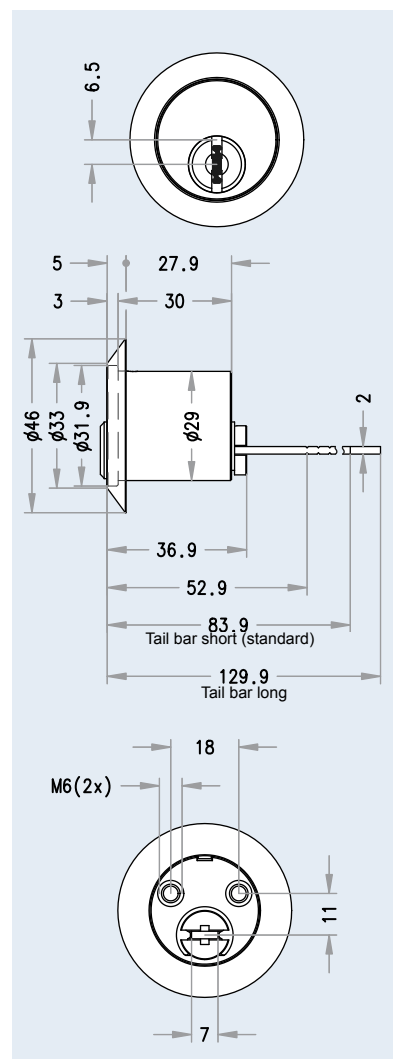
- Cylinder body base material: brass
- Cylinder plug base material: brass
- Tail bar for door thicknesses between 40 and 70 mm
- Cylinder Ø 34 mm
- Rose Ø 50 mm

Scope of supply

- Round cylinder with rose and two M5 x 40 fixing screws

Installation & operation

- Easy cylinder installation in prepared round hole
- Cylinder fixed through two M6 fastening holes
- Cylinder screws with pointed tips to make installation easier



PDZ Portal Double Cylinder



Ordering information

- PDZ cylinder length A/B, [finish], [security and usage options]

Applications and usage

- Portals with direct bolting
- Garden doors without mortise lock but with direct bolting

Functional characteristics

- Lockable on both sides with key
- Locking bolt Ø 15 mm
- Bolt protrusion: 21.5 mm
- 15 mm stroke

Security features

- Hard metal drilling protection in plug and body
- Vertical key insertion for optimal scanning of locking elements

Technical data

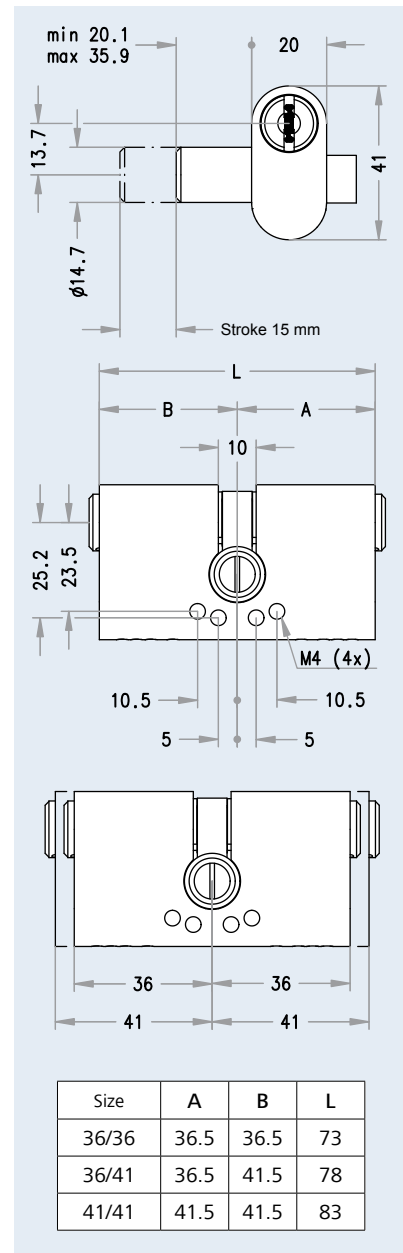
- Cylinder body base material: brass
- Cylinder plug base material: brass
- All scanning elements coated with Triflon
- Integrated locking bolt with
- 15 mm stroke

Scope of supply

- Locking cylinder with locking bolt, without fixing screw

Installation & operation

- Cylinder installation in a prepared, empty cylinder hole; designed for portal cylinder
- 3 possible M5 fastening variations



PHZ Portal Half Cylinder



Ordering information

- PHZ cylinder length A, [finish], [security and usage options]

Applications and usage

- Portals with direct bolting
- Garden doors without mortise lock but with direct bolting
- Show window shields

Functional characteristics

- Lockable with key on one side
- Locking bolt Ø 15 mm
- Bolt protrusion: 21.5 mm
- 15 mm stroke

Security features

- Hard metal drilling protection in plug and body
- Vertical key insertion for optimal scanning of locking elements

Technical data

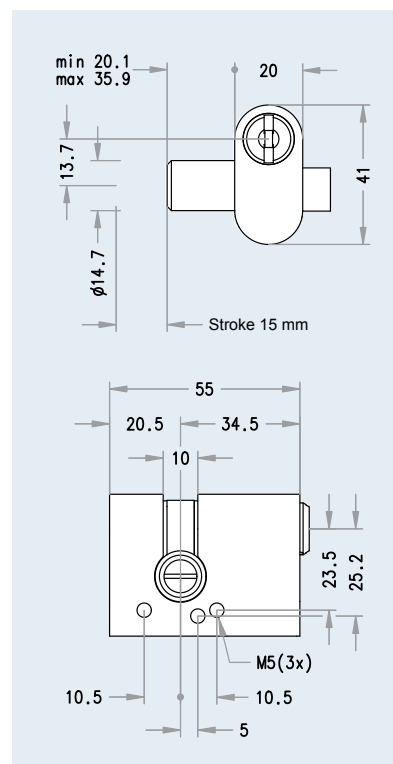
- Cylinder body base material: brass
- Cylinder plug base material: brass
- Integrated locking bolt with
- 15 mm stroke

Scope of supply

- Locking cylinder with locking bolt, without fixing screw

Installation & operation

- Cylinder installation in a prepared, empty cylinder hole for portal cylinders
- 3 possible M5 fastening variations



EMZY MZT35i Electronic Motorised Cylinder



Ordering information

- KZ cylinder length A/B, MZT35i [A=outer side; B=inner side (thumbturn side)], [security and usage options], [finish]

Accessories

- "MCU MI" micro controller for flush-mounted installation, without power adapter
- "MCU NT" power adapter for standard supply for the "MCU MI" micro controller
- EVKA cylinder connection cable, 10 m
- ERK1 door contact, incl. 1.5 m connection cable (white or brown)
- ERK4 door contact for metal doors with installation tray, incl. 1.5 m connection cable
- EKA0 open cable transition, length 30 cm; incl. two end pieces (white, brown or chrome)
- ERKO bolt contact, incl. 2 m connection cable with switch-over contact
- ABDMK 35 thumbturn cover

Applications and usage

- For mortise locks in accordance with DIN or ÖNORM
- For mortise locks in accordance with European technical standards
- Small backset for the motorised thumbturn on the thumbturn side, particularly suited for metal frame doors
- And for mortise locks with profile cylinder hole
- Motorised thumbturn with integrated button for simple operation
- Mechanical emergency release from the locking side
- Electronic control via external input units (such as code keypad, wall reader, ...)

Functional characteristics

- Electronically operated, cabled, motorised cylinder
- To lock/unlock locks
- Simple night-and-day mode switch
- Interactive learn mode for lock function (single and double turn locks)

Security features

- Shape-matched spacer discs allow seamless transition from the thumbturn to the escutcheon

Technical data

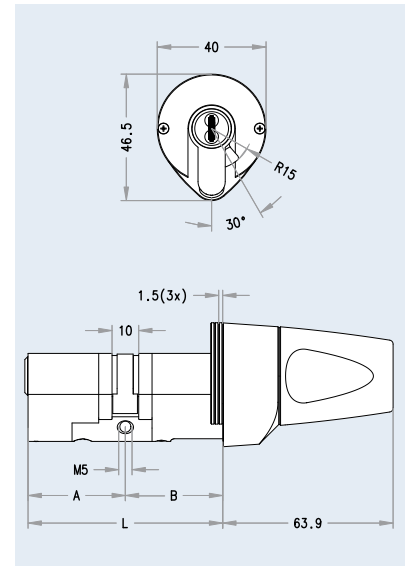
- Cylinder body base material: brass
- Cylinder plug base material: brass
- Cam home position: 30 degrees
- Cam width: 9.3 mm
- Modular cylinder design
- Motorised thumbturn torque about 1 Nm

Scope of supply

- Electronic motorised cylinder
- Three 1.5 mm spacer discs
- Fixing screw

Installation & operation

- Easy cylinder installation in a prepared, empty cylinder hole
- Cylinder projecting length may not exceed 3 mm for security-relevant doors
- Cylinder fixed through a M5 fastening hole

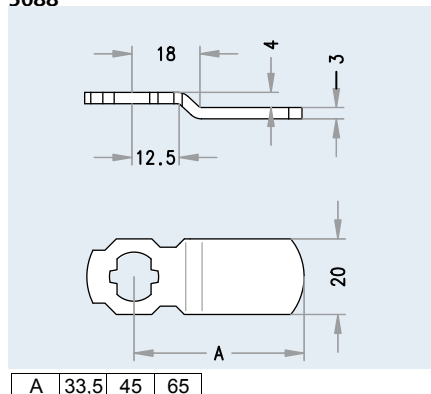


Cam types

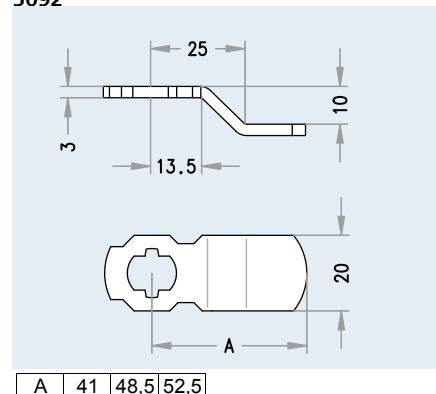
Applications and usage

- For cam locks (plate installation cylinders) MB23, MB30, ZB27, ZB27K, MB23G, MB23GT, MB30MB, MB30

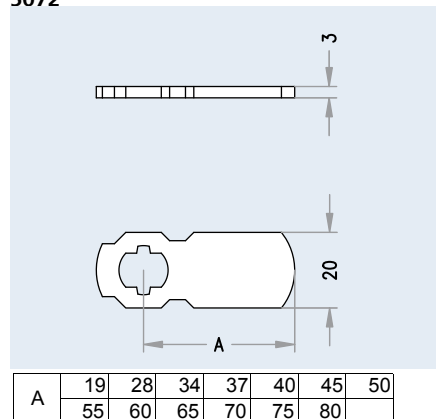
5088



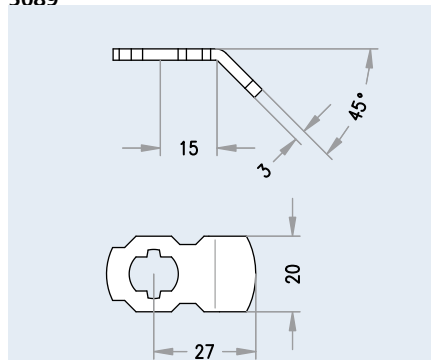
5092



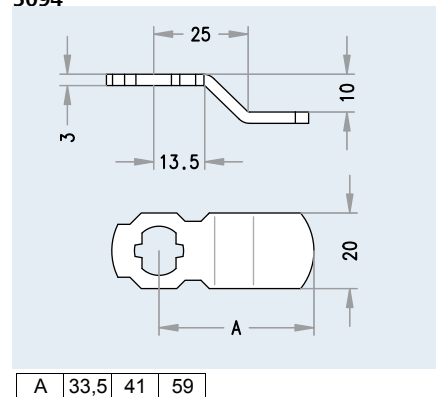
5072



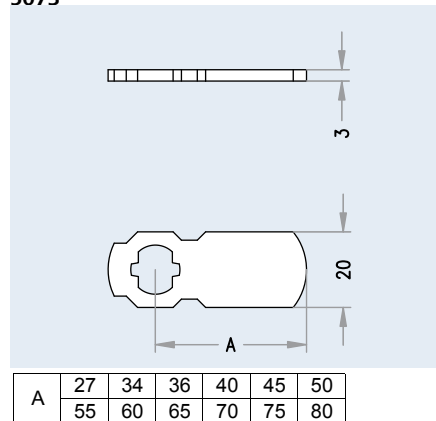
5089



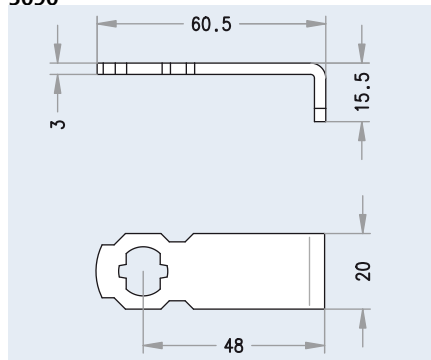
5094



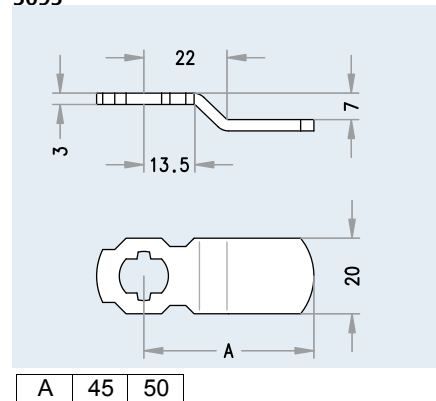
5073



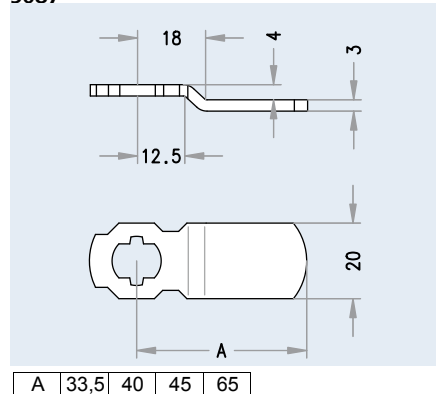
5090



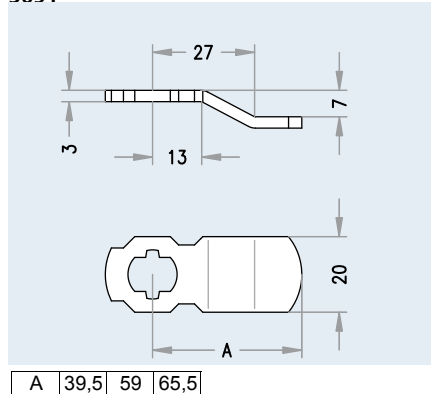
5095



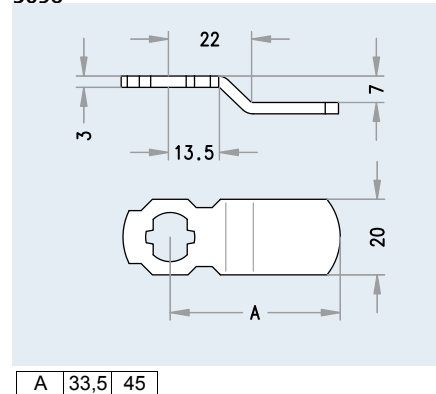
5087



5091

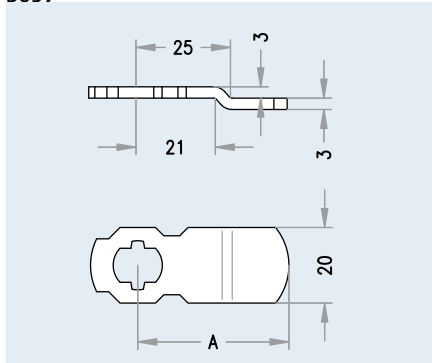


5096



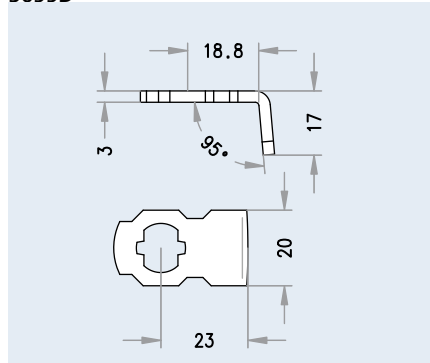
Cam types

5097

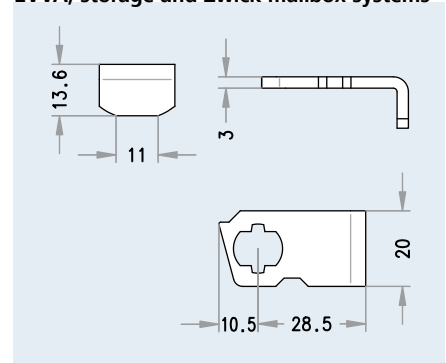


A	33,5	37	40	45	50	55	70
---	------	----	----	----	----	----	----

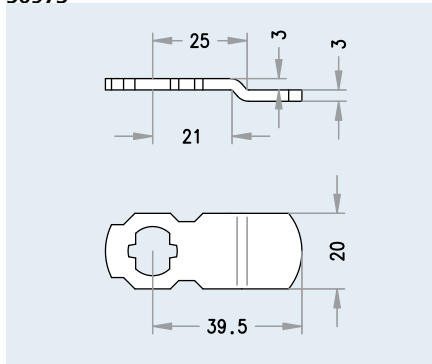
5099D



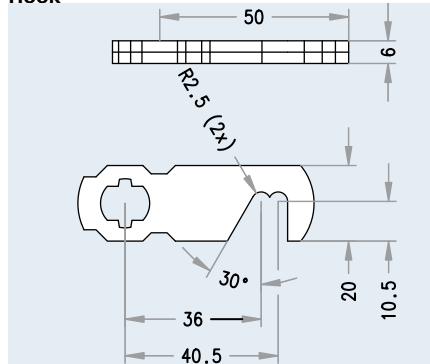
EVVA, storage and Zwick mailbox systems



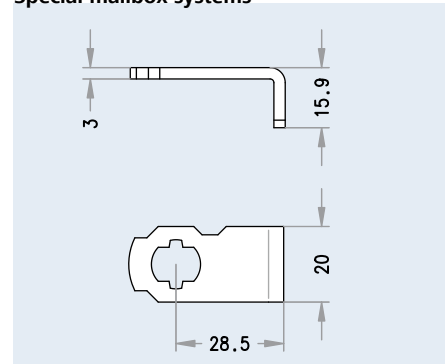
5097S



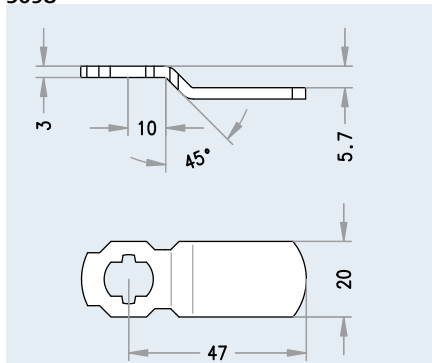
Hook



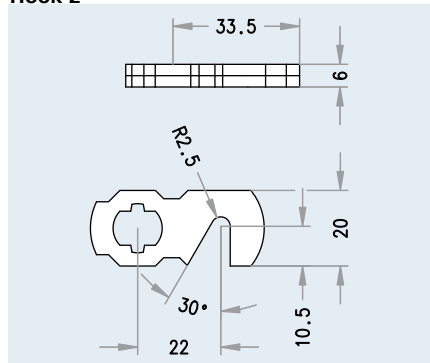
Special mailbox systems



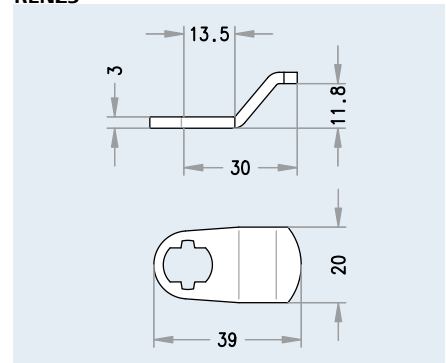
5098



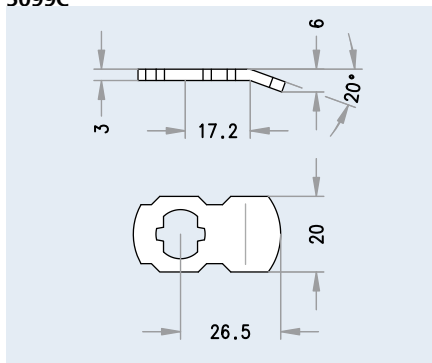
Hook 2



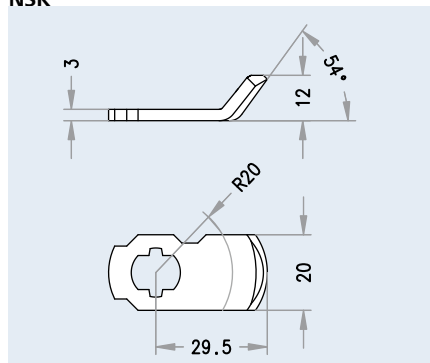
RENZ3



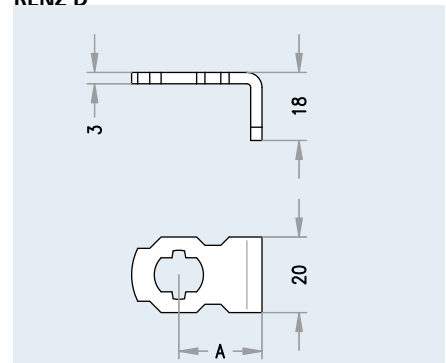
5099C



NSK



RENZ D



A	22	28
---	----	----

B1 Construction Key



Ordering information

- ▶ B1

Technical data

- ▶ The conical, square-shaped key tip ensures doors can be opened and closed easily.
- ▶ Cam for profile cylinder hole
- ▶ 7 to 10 mm square-shaped pin
- ▶ Cylinder measuring unit

Material used

- ▶ Composite

B2 Construction Key



Ordering information

- ▶ B2

Technical data

- ▶ The conical, square-shaped key tip ensures doors can be opened and closed easily.
- ▶ Square-shaped pin lock key, 6, 7 and 8 mm
- ▶ Cam for profile cylinder hole
- ▶ Square-shaped pin, 6 to 10 mm
- ▶ Hexagonal key, 3 mm

Material used

- ▶ Composite

B3 Construction Key With Cylinder Measuring Unit



Ordering information

- ▶ B3

Applications and usage

- ▶ The conical, square-shaped key tip ensures doors can be opened and closed easily.
- ▶ 6, 7 and 8 mm square-shaped pin lock key
- ▶ Cam for profile cylinder hole
- ▶ Square-shaped pin between 7 and 10 mm
- ▶ Hexagonal key, 3 mm
- ▶ Cylinder measuring unit

Material used

- ▶ Die-cast, nickel plated

B4 Multi-Tool Construction Key



Ordering information

- ▶ B4

Applications and usage

- ▶ External square socket key, AF width 7 + 8 mm
- ▶ External triangular socket key, 8 mm
- ▶ Pozidrive screw bit no. 2
- ▶ Countersunk screw bit size 3
- ▶ Radiator bleed key, AF width 5 mm
- ▶ Measurement scale up to 40 mm
- ▶ Round cylinder carrier, nominal \varnothing 22 mm
- ▶ Bottle opener on carrier
- ▶ Square drive, AF width 7 / 8 / 9 / 10 mm
- ▶ Hexagonal square drive, AF width 3 mm

Material used

- ▶ Die-cast, satin nickel plated

Multi-Spray



■ Applications and usage

- ▶ Indispensable for house and garden, at the workplace, for vehicles, sport and leisure equipment, industry and agriculture, all kinds of machines, locks as well as all electrical devices.

■ Security features

- ▶ Free of silicone, hence it does not gum susceptible materials

■ Functional characteristics

- ▶ Eliminates squeaking and creaking
- ▶ Helps to jump start damp motors
- ▶ Loosens jammed components
- ▶ Protects against corrosion
- ▶ Cleans tough dirt and stains

■ Designs

- ▶ Multi-Spray 200 ml
- ▶ Multi-Spray 400 ml

Resistorx Screws



■ Applications and usage

- ▶ Tamper-proof cylinder fixing screw

■ Security features

- ▶ Optimum protection against tampering with special Resistorx
- ▶ Countersunk head with TX35

■ Designs

- ▶ Nirosta, stainless steel

Ordering information

- ▶ Resistorx

A ▶ EVVA Sicherheitstechnologie GmbH
Wienerbergstraße 59-65 | A-1120 Wien
T +43 1 811 65-0 | F +43 1 812 20 71
office-wien@evva.com | www.evva.com

EVVA Sicherheitssysteme GmbH
Ing.-Julius-Raab-Str. 2 | A-2721 Bad Fischau-Brunn
T +43 2622 42288 | F +43 2622 42288-34
office-badfischau@evva.com | www.evva.com

D ▶ EVVA Sicherheitstechnik GmbH
Höfgeshofweg 30 | D-47807 Krefeld
T +49 2151 37 36-0 | F +49 2151 37 36-5635
office-krefeld@evva.com | www.evva.de

EVVA Sicherheitstechnik GmbH
Föpplstraße 15 | D-04347 Leipzig
T +49 341 234 090-5 | F +49 341 234 090-5760
office-leipzig@evva.com | www.evva.de

EVVA Sicherheitstechnik GmbH
Kieffholzstraße 287 | D-12437 Berlin-Treptow
T +49 30 536 017-0 | F +49 30 536 017-5722
office-berlin@evva.com | www.evva.de

