

PRODUCT – CATALOGUE SPECIFICATION MANUAL



Index

Page:	Content:
1	A Successful Story
2	References
4	Master Key System
6	DPS - Double Profile System
7	DUAL - Modular System
8	3KS - Modular System
9	MCS - Modular System
10	Open Profile
11	Cylinder Profile
13	Knob Programme
14	Padlocks
15	Key Depots
16	Modular System
18	Special Features
19	Special Cylinder
21	Special Cams for MB 23 G
22	Cabinet Locks
24	Rim Locks
25	Mortice Locks
28	Security Fittings
29	Security Escutcheons
29	Accessories

A Successful Story

The Toolmaker

In 1919 the Viennese toolmaker Karl Jindrich founded the company EVVA soon after he had specialised in the design of Master Key Systems. Since then, the name EVVA – Erfindungs (Invention) – Versuchs (Testing) – Verwertungs (Commercial Development) – Anstalt (Company) – stands for an inventive and innovative company.



The Company's Growth

In the 70's EVVA grew to be one of the most technologically advanced cylinder manufacturing companies. In 1973 Nikolaus Bujas took over the company and in 1976 he initiated the development of computer software for the calculation of Master Key Systems - a visionary step.

The Technological Trend-Setter

In 1982 EVVA presented the revolutionary Magnetic Code System MCS. Based on the well-proven GPI System (Ground Profile Integrated), in 1992 EVVA developed the systems DPI (Double Profile Integrated) and DPS (Double Profile System). In 1993 EVVA presented the unique Three Curves System (3KS). In the 90's EVVA introduced electromechanical systems and electronic access control systems including ECS (Electronic Control System) and EMZY-2 (Electronic Motorized Cylinder). In the new millennium the modular systems DUAL (mechanical reversible key system) ELMO (Electronic Modular Cylinder) and a modular solution for the motorized cylinder EMZY-2 were introduced into the EVVA-range.



Today

Today the EVVA-Group has more than 600 employees in Austria and abroad. In 1993 EVVA was the first cylinder manufacturer in continental Europe to receive ISO 9001 certification for its high quality in design, production, assembly, logistics and service.



References



Alton Towers, Staffordshire



Imperial War Museum, London



Queen Elisabeth Conference Centre, London



Debis Daimler-Benz, Berlin



References

National Bank, Prague



National Library, Copenhagen



Jockey Club, Hong Kong



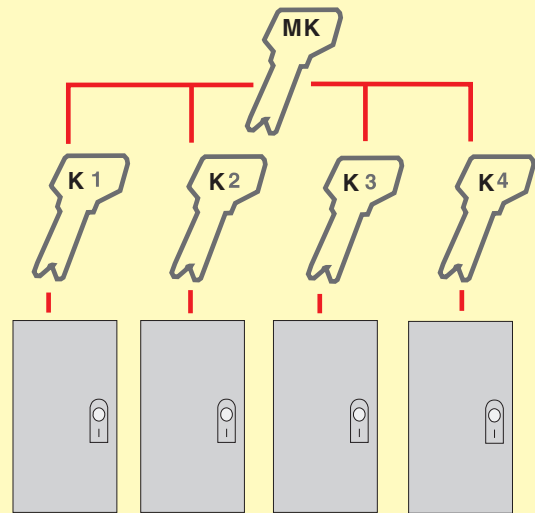
University of Biological Science, Hong Kong



Master Key Systems

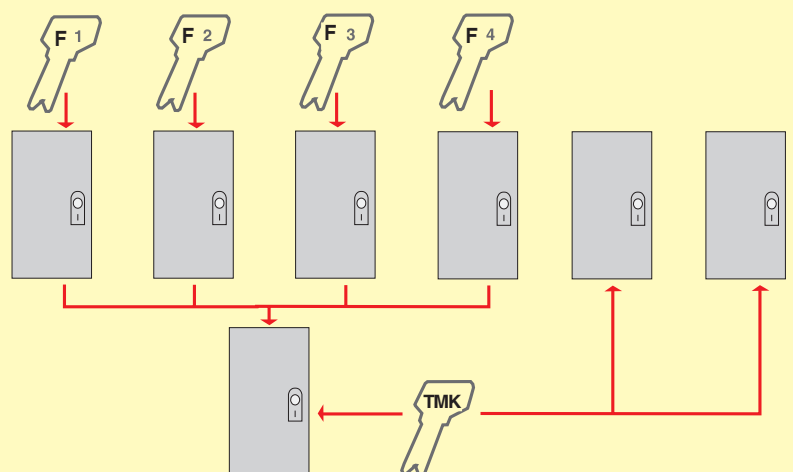
The Simple Master Key System

A system with keyed to differ cylinders and a superior Master Key.

[illegible]

The Central Locking System with or without Technical Master Key

Each flat is provided with keyed to differ cylinders; the flat owners can lock both, their flat and the main entrance door with their individual key. In addition to this a technical master key, which opens all technical rooms, can be planned.

[illegible]

DPS – Double Profile System



The Triple Security

The DPS system is characterised by two crossed and overlapping profiles which work independently from each other.

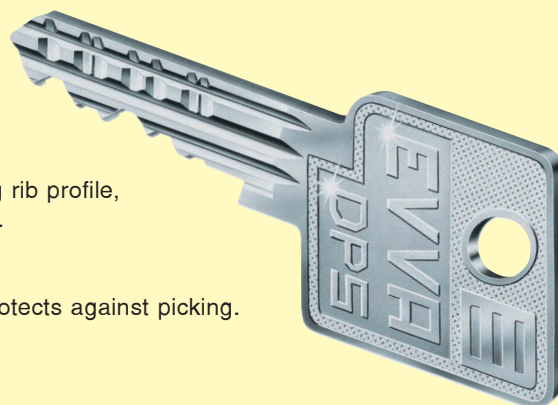
How does it work?

The key is checked upon insertion in the cylinder plug when inserted by the plug rib profile, the side bar (springlessly controlled by a curve in the body) and the locking pins.

A newly created second profile system overlaps the length profile.

Both profiles are independent in position and type.

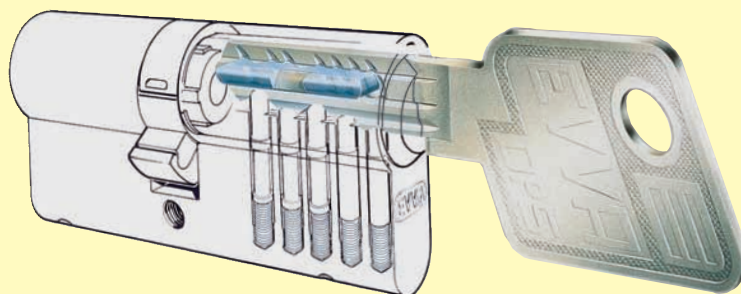
There is constantly at least a quadruple overlapping of the plug profile, which protects against picking.



Your Advantages

- Legal key protection through patents: e.g. Euro Patent no. 0566.701
- Drilling protection because of hardened steel plates and pins.
- Wear resistance and durability due to special plug pins and the springless profile side bar.
- Also available as modular system (see page 16 f).

Available finishes: Satin brass
Polished brass
Satin nickel
Polished nickel
Polished chrome
Other finishes on request



DUAL – Modular System



Strong Technology

Continuous development activities have lead to a simple and reliable system with double coding:
A locking pin system and a longitudinal profile both contribute to a high number of combinations (differs).

How does it work?

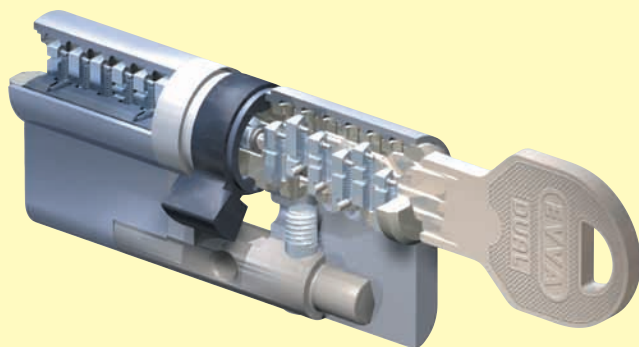
The coding of the DUAL key is achieved by 2 characteristic features which work independently from each other.
One locking pin system and one longitudinal profile complement one another and represent the integration of different advanced technologies within one system.
The locking process checks the positions of the 12 spring-loaded locking pins by 2 locking bars.



Your Advantages

- Reversible key system: You can insert the key on both ways (like a car key)
- Modular system for flexible adaptation of cylinder lengths.
This ability to modify cylinders on site saves both, time and money.
- Drilling protection on request
(steel inserts or stainless steel high security modules)
- Technological (copy protection) key protection
and legal (patents) key protection

Available finishes: Satin brass
Polished brass
Satin nickel
Polished nickel
Polished chrome
Other finishes on request



3KS – The 3-Curves-System



General Information

The unique 3-Curve-System with **reversible key** offers many advantages for both single door protection and master key systems.

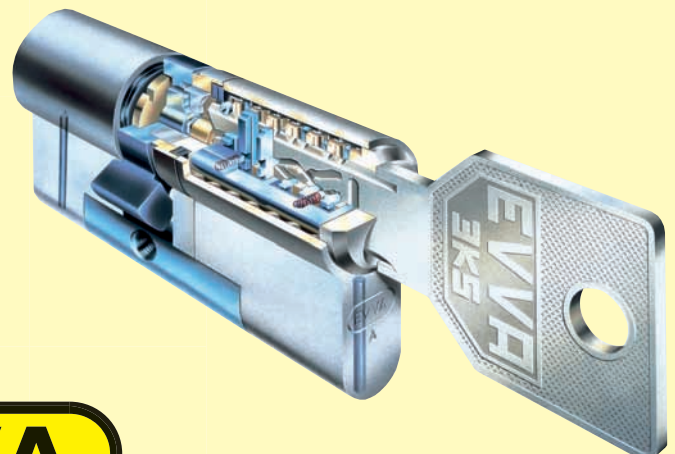
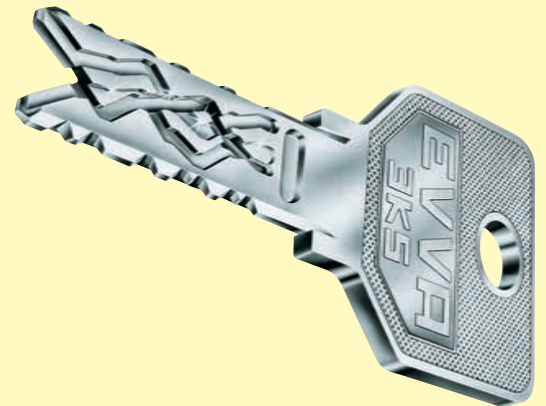
How does it work?

Highest functional reliability is guaranteed by 12 springless locking pins, which are forced in specific positions and checked by two sidebars. An additional bottom bar checks the edge profiles of the key.

Your Advantages

- Reversible key system: You can insert the key in both ways (like a car key).
- Modular system for flexible adaptation of cylinder lengths.
This ability to modify cylinders on site saves both time and money.
- An incredibly high number of variations is possible. 30,000,000,000,000 (30 billion) different reversible key combinations for use in master key systems due to three security levels: locking pins, key curves and sidebars.
- Each key is unique.
- Drilling and plug pulling protection are offered by the inclusion of hard metal pins in both, the body and the plug.
- Picking protection by a complicated technical system: 12 springless locking pins with 18 control pins have to be brought into a certain position before the plug will turn.
- Protection against pulling and breaking off by locking pins, sidebars and a special cam.
- High wear resistance.
- Resistance against dust or ice due to special locking pins.
- Round cylinder version starting from 18 mm diameter, possible without varying restrictions.
- **Technical** key protection.
- **Legal** key protection through patents: e.g. Euro Patent no. 0335.069, Euro Patent no. 0613.987, USA Patent no. 4977.767.

Available finishes: Polished brass
Satin nickel
Polished nickel
Polished chrome
Other finishes on request



MCS – Magnetic Code System



General Information

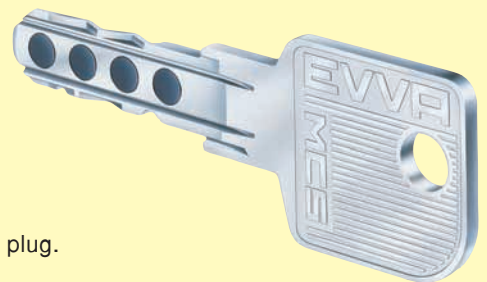
The Magnetic Code System has been developed in co-operation with the Technical University of Vienna for highest security requirements. With 299 quadrillion combination possibilities it is specially suitable for complex master key systems.

How does it work?

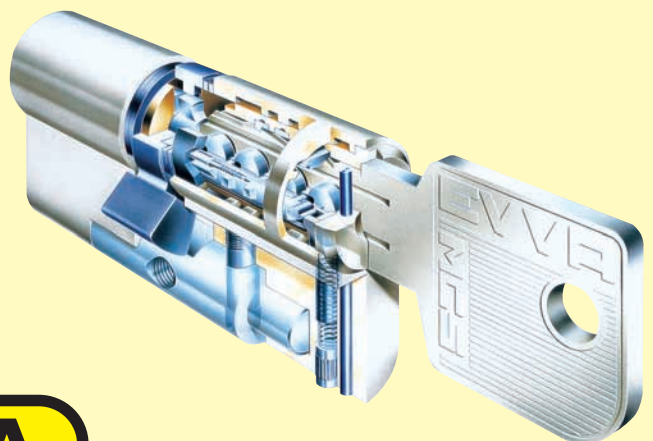
The 8-fold magnetisation of the key is checked through magnetised rotors, which are freely rotating and located on the left and right side of the key channel. In addition the access authorisation is checked through a profile system and a special feature on the key.

Your Advantages

- 3-fold security through magnetic and two mechanical codes
- Permanent magnets made of samarium cobalt-5 providing long durability. The magnetism cannot be changed or deleted by conventional methods.
- Picking protection: the rotors can rotate freely and are separated from the key way by a brass wall, which means that picking is impossible.
- Drilling and plug pulling protection offered by hard metal pins in both, the body and the plug.
- Double check of the code within 360° turn.
- Technical key protection
- Legal key protection through patents: 64 patents worldwide since MCS has been introduced on into the market. (e.g. European patent no. 182.976)
- Modular system for flexible adaptation of cylinder lengths. This ability to modify cylinders on site saves both, time and money.



Available finishes: Polished brass
Satin nickel
Polished nickel
Polished chrome
Other finishes on request



Open Profile



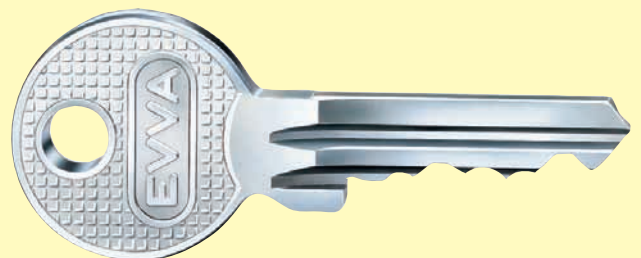
General Information

Alongside its master keying ranges, EVVA also offers a full range of cylinders in Open Profile. Open Profile keys are made of brass and are available with elongated shoulders upon request.

Your Advantages

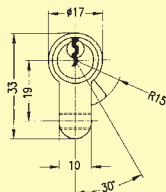
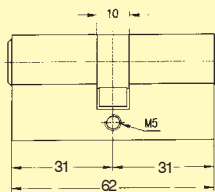
- Keyblanks are available in many countries, which makes it easy for the end user to get extra keys from their local locksmiths.
- Drilling and picking protection available on request.
- Visi-packs available for certain cylinder types.
- Elongated key shoulders.

Available finishes: Satin brass
Polished brass
Satin nickel
Polished nickel
Polished chrome
Other finishes on request



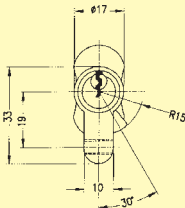
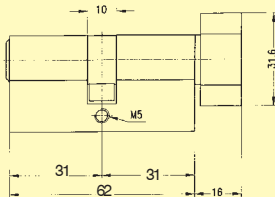
Cylinder Profiles

Euro Profile



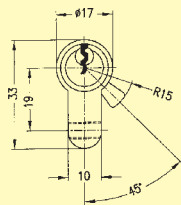
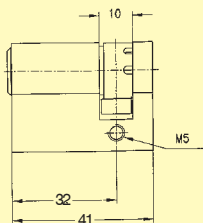
Double Cylinder DZ

To be used with mortice locks for Euro Profile cylinders standard length 62 mm (DZ 31/31), elongations in 5 mm steps.



Knob Cylinder KDZ

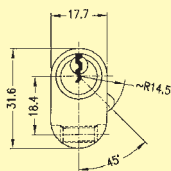
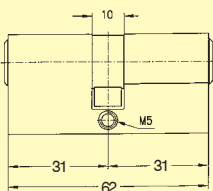
To be used with mortice locks for Euro Profile cylinders standard length 62 mm (KDZ 31/K31), elongations in 5 mm steps. Many different knob types available, see page 13.



Single Cylinder HZ

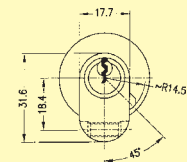
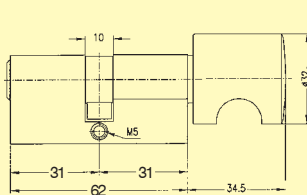
To be used with mortice locks for Euro Profile cylinders standard length 41 mm (= 32 mm to middle of the cam), (HZ 32), elongations in 5 mm steps, cam adjustable to 8 positions.

Oval Profile



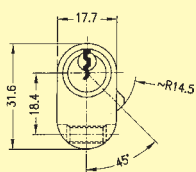
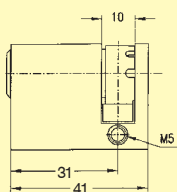
Double Cylinder ODZ

To be used with mortice locks for British Oval Profile cylinders Available lengths: ODZ 31/31, ODZ 36/36, ODZ 41/41



Knob Cylinder OKZ

To be used with mortice locks for British Oval Profile cylinders Available lengths: OKZ 31/K31, OKZ 36/K36, OKZ 41/K41 Many different knob types available, see page 13.



Single Cylinder OHZ

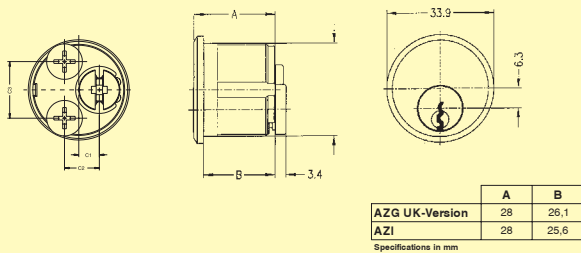
To be used with mortice locks for British Oval Profile cylinders Available lengths: OHZ 32 (42 mm total length) OHZ 37 (46 mm total length)

Length difference of 0,5 mm per cylinder side possible, depending on the product range used.



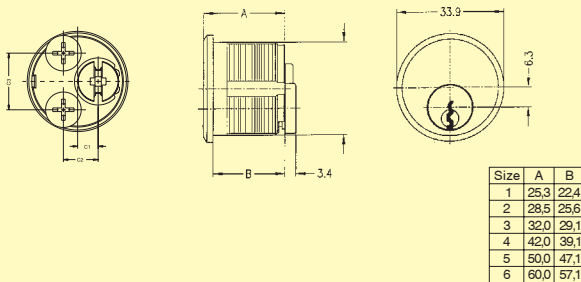
Cylinder Profiles

Round Cylinders



Rim Cylinder

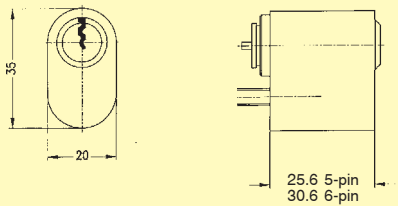
To be used with various kinds of rim locks



RM Cylinder (screw-in)

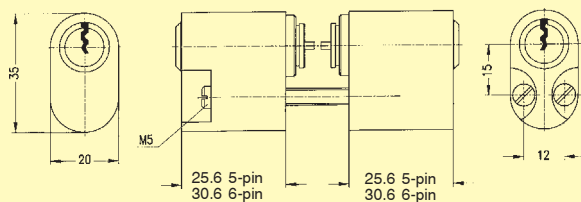
To be used with Adams Rite and other lockcases accepting screw-in cylinders.

Scandinavian Oval Cylinders



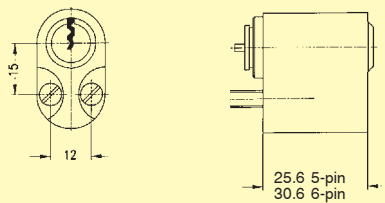
SKA (single outside)

To be used with scandinavian lockcases.



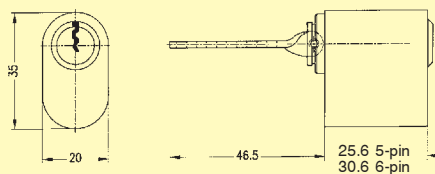
SKA/SKI Pair (outside/inside)

To be used with scandinavian lockcases.



SKI (single inside)

To be used with scandinavian lockcases.



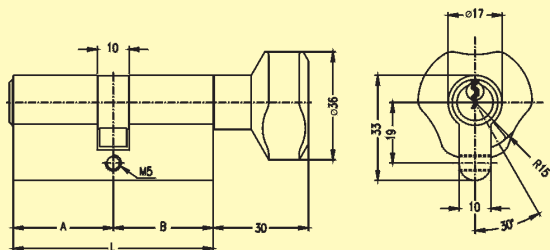
SK 201 (Rim Cylinder)

To be used with scandinavian lockcases.

Length difference of 0,5 mm per cylinder side possible, depending on the product range used.

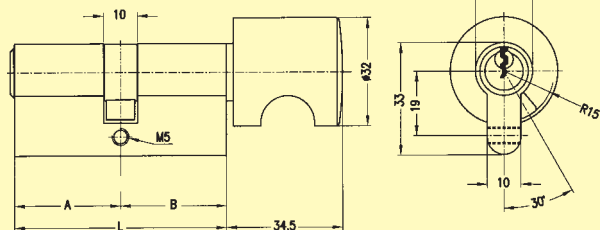


Knob Programme



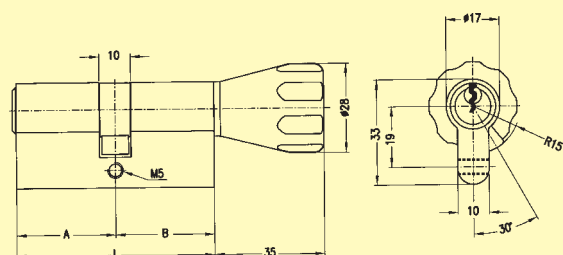
AKN aluminium knob

finishes: satin brass
polished brass
satin nickel



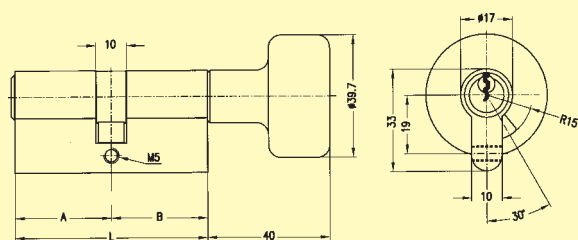
GKN brass thumbturn

finishes: satin brass
polished brass
satin nickel
or plastic
colors: white, black, green, blue, red;
other RAL-colors on request



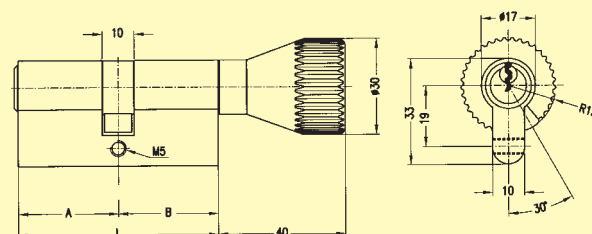
KKN conical knob

finish: satin brass
polished brass
satin nickel



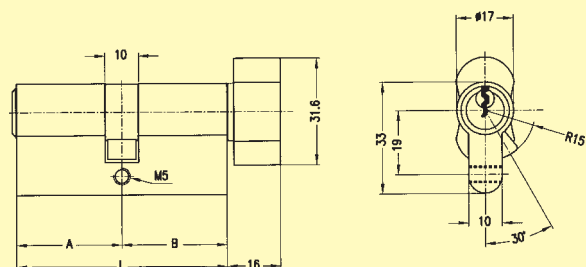
RKN round knob

finishes: satin brass
polished brass
satin nickel



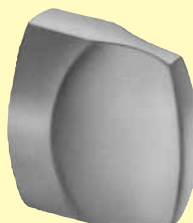
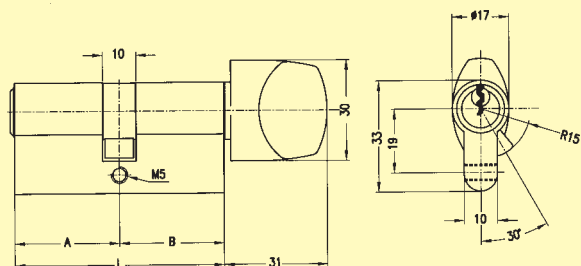
MKN knob

finishes: satin brass
polished brass
satin nickel



OKN light metal oval knob

finish: anodised aluminium (F1)

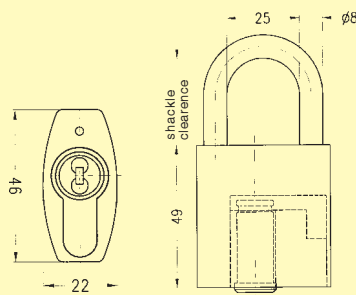


FKN flat knob

finish: satin brass
polished brass
satin nickel
polished chrome



Padlocks



HPM 46 padlock in the modular system

Shackle: 8 mm, chrome plated hardened steel.

Body: PERUNAL 214 is a high quality material and demonstrates high durability.

Surface: black anodised

- Key can only be withdrawn when the padlock is locked
- Shackle is locked on both ends
- High protection against corrosion by PERUNAL 214 body and chrome plated hardened steel or stainless steel shackle.
- Protection against wear and dust; shackle-extensions; shackle protection (available)
- 2 keys included

Special Versions

For HPM 46, H 24 and H 30

on request: - shackle stainless steel, shackle clearance 40, 50, 60, 70, 90, 100, 120, 150, 180 mm

Dust cover on request



H24, H30

H 24: satin nickel, with chrome-plated steel shackle, or with stainless steel shackle on request
 Shackle diameter 8 mm
 Body width 45 mm
 Shackle length shackle clearance 30 mm
 Shackle length clear width 24 mm

H 24K: satin nickel, with security chrome-plated steel short shackle

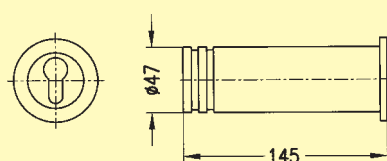
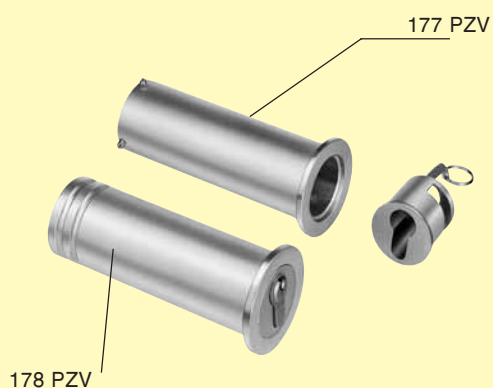
H 30: satin brass, nickel-plated, with steel shackle, chrome-plated or stainless steel on request
 with detachable security short shackle
 Shackle diameter 10 mm
 Body width 55 mm
 Shackle length shackle clearance 40 mm
 Shackle length clear width 30 mm

H 30K: satin brass, nickel-plated, with detachable security short shackle of steel, chrome-plated

on request: - rainhole
 - inserts for squire, masters and padlocks



Key Depots



Tubular Wall Safes

Mini-safes for the administration of cash, jewellery, keys, etc. Ideal for building it into walls or floors.

178 PZV

Length 145 mm, diameter 47 mm, takes HZ/32 cylinder (all systems)

finish: body aluminium, without wall anchoring, with aluminium or stainless steel insert

178 PZV-A: With aluminium insert, without wall anchoring, with ring grooves

178 PZV-N: With stainless steel insert, without wall anchoring, with ring grooves

177 PZV-A*: With aluminium insert, with wall anchoring

177 PZV-N*: With stainless steel insert, with wall anchoring

*same as 178 PZV, but with wall anchoring



176 PZV / 179 PZV

length 150 mm, diameter 78 mm, takes HZ/32 cylinders (all systems)

finish: body aluminium, without wall anchoring, with aluminium or stainless steel insert

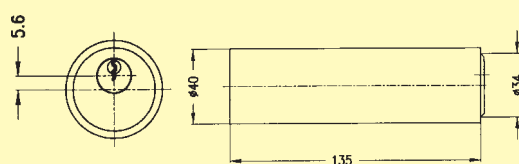
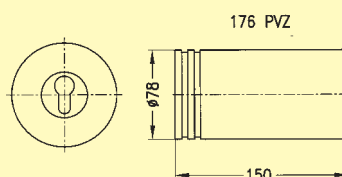
176 PZV-A: With aluminium insert, without wall anchoring

176 PZV-N: With stainless steel insert, without wall anchoring

179 PZV-A*: With aluminium insert, with ring grooves

179 PZV-N*: With stainless steel insert, with ring grooves

*same as 176 PZV, but with covering escutcheon and seal ring



27 ZBV

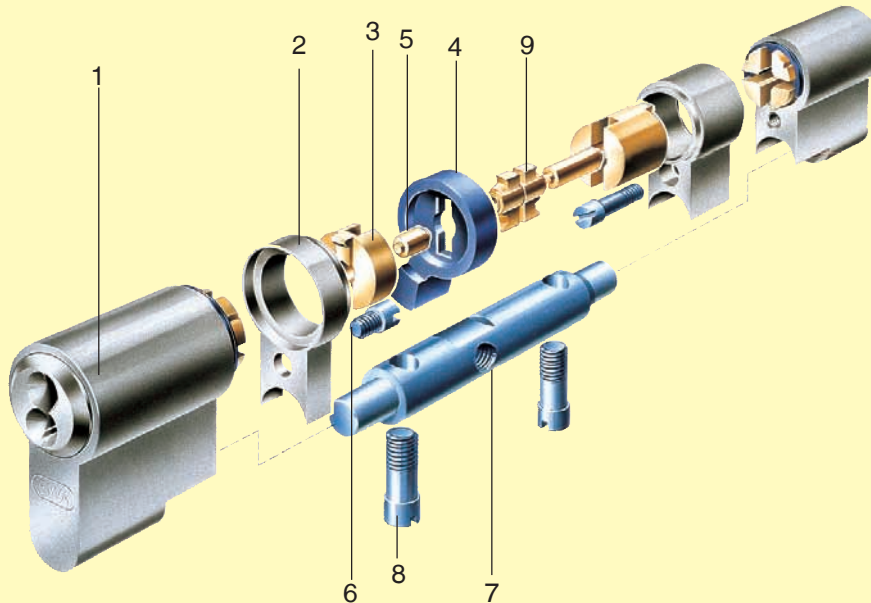
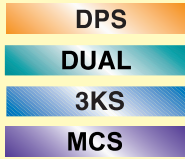
length 135 mm, diameter 40 mm, takes ZB 27 cylinder (all systems)

finish: satin brass



Modular System

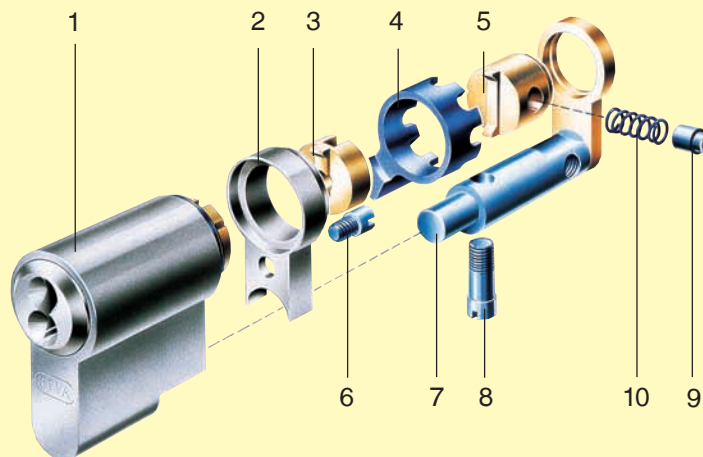
Double Cylinder - DZ



- | | | | |
|---|--|---|--|
| 1 | system module | 5 | coupling extensions
(also 10, 15 and 20 mm) |
| 2 | body extension 5 mm
(also 10, 15 and 20 mm) | 6 | screws for body extension |
| 3 | plug extension 5 mm
(also 10, 15 and 20 mm) | 7 | connecting rod |
| 4 | cam for DZ | 8 | connecting screws |
| | | 9 | coupling for DZ |



Single Cylinder - HZ

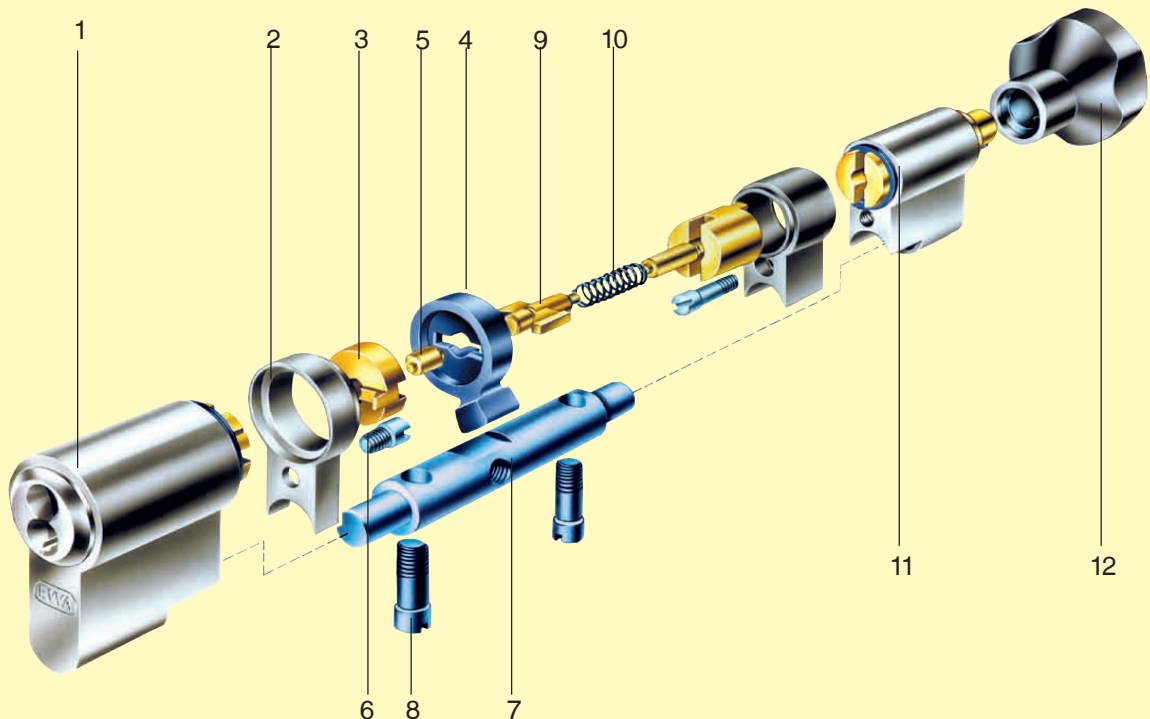


- | | | | |
|---|--|----|--------------------------|
| 1 | system module | 5 | plug end for HZ |
| 2 | body extension 5 mm
(also 10, 15 and 20 mm) | 6 | screw for body extension |
| 3 | plug extension 5 mm
(also 10, 15 and 20 mm) | 7 | connecting rod for HZ |
| 4 | cam for HZ | 8 | connecting screw |
| | | 9 | retaining pin for HZ |
| | | 10 | spring for HZ |



Modular System

Knob Cylinder KDZ



- | | | | | | |
|---|--|---|--|----|-------------------------|
| 1 | system module | 4 | cam for KDZ | 8 | connecting screws |
| 2 | body extension 5 mm
(also 10, 15 and 20 mm) | 5 | coupling extension 5 mm
(also 10, 15 and 20 mm) | 9 | coupling for KDZ |
| 3 | plug extension 5 mm
(also 10, 15 and 20 mm) | 6 | screws for body extension | 10 | coupling spring for KDZ |
| | | 7 | connecting rod | 11 | system module KDZ |
| | | | | 12 | knob |

Advantages of the Modular System

- You are very flexible as far as customer requests are concerned, because you can decide on the cylinder lengths yourself and build them on your own.
- Existing modular cylinders can be adapted at any time.
- If necessary, your assortment can gradually be supplemented.
- If you are not sure about the cylinder length, you can assemble the cylinder in the requested length on site.
- All modular parts can be used for every EVVA modular system.



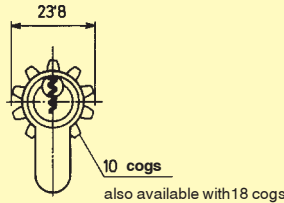
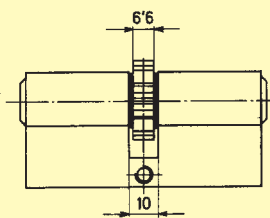
Special Features



BSZ

Double cylinder with external override: A locked door can be opened with a second key although a key is inserted on the other side.

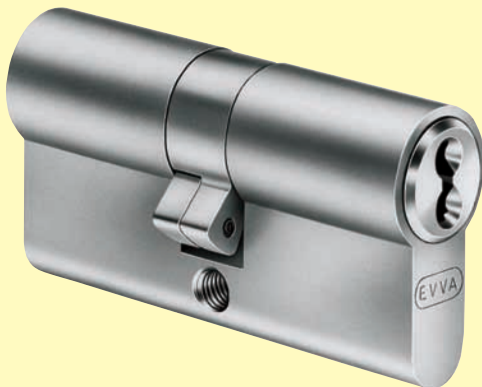
Open Profile, DPS: min. cylinder length 31 mm
(exception: 27/36 or 27/41)
MCS, 3KS, DUAL: starting with a min. length of 31/36 mm



ZR - Cog Wheel Cam

The cog wheel cam is suitable for DZ / KDZ and for Mul-T-Lock-mortice locks

Not available for the following cylinder lengths 3KS and DUAL: DZ 27/36, DZ 27/41, DZ 27/46; KDZ 27/K36, KDZ 27/K31, KDZ 27/K41)



ARS Interlocking Security Cam

Interlocking security cam for double cylinders and knob cylinders. Provides optimal protection against breaking and wrenching off the cylinder and pulling out the plug. The interlocking security cam is an efficient protection.

Modular System: The interlocking security cam is replaced by a high-security module, which guarantees the same protection as the security cam because of its special structure.

Open Profile, DPS: 1) min. cylinder length 27 mm
2) BSZ and occupied sign;
min. cylinder length 31 mm

MCS, 3KS, DUAL: high security module instead of ARS in the modular system



VARIO

Re-keyable high security cylinder
VARIO AB with 2-fold-combination

- In case of key loss or theft
- Security is recovered within seconds
- One full key turn changes the cylinder combination

not available in DPS-modular



Special Cylinders



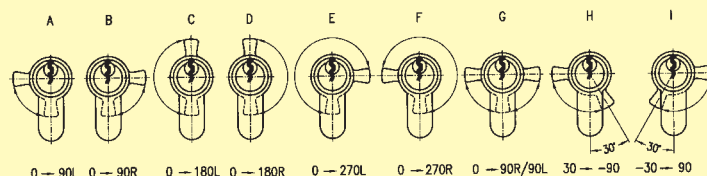
DZ/S and HZ/S switch- and contact cylinder

To protect against unauthorised action. As a switching unit in any kind of control circuits. E.g.:

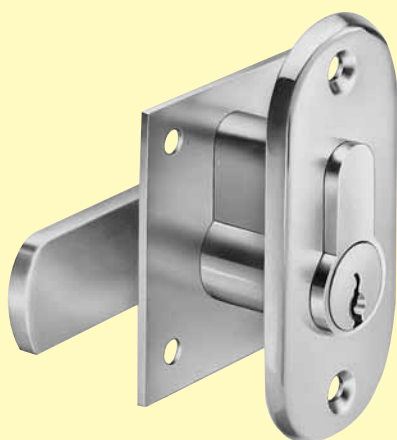
- to activate or deactivate an alarm system
- to secure machines of industries, businesses and for domestic use
- to install door- and gate control, door- and door-opening automatics, traffic systems, light barrier systems, switch columns and remote switching

For block locks in order to additionally protect single-secured rooms and areas. Can completely be integrated in alarm systems with or without computer control, and in master key systems.

Finishes: satin brass (SB) and nickel-plated (NI)



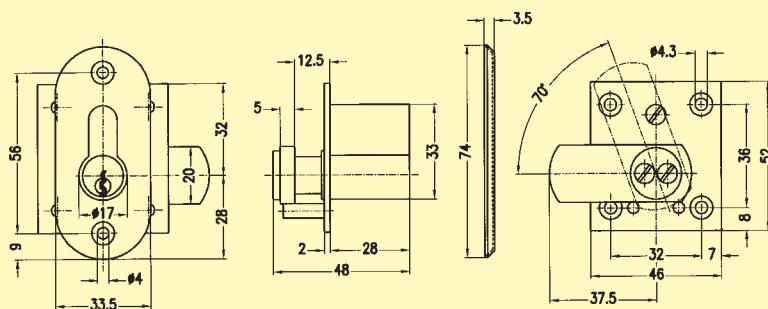
Presentation of the cam rotation with complete key rotation



HMB cam lock with profile cylinder

With cam, satin brass (SB) and nickel-plated (NI)
2 keys, without escutcheon, with cam plate, cam 5072; A 37,5; 5 mm strong

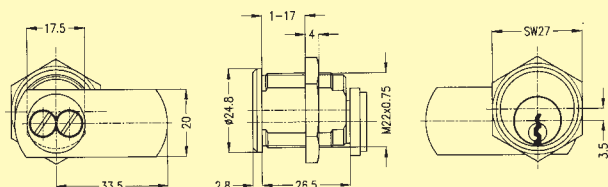
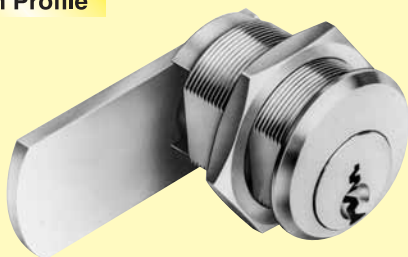
escutcheon E 1 - E 4 see page 29



Special Cylinders

3KS

Open Profile



MB 23 G cam lock

With lock cam 5072 A = 33,5mm (different cams available),
cam rotation 90°, nickel-plated (NI),
incl. 2 keys, key can only be withdrawn when locked

delivery versions

Standard (completely assembled)

MB 23 G: incl. nut M22x0,75

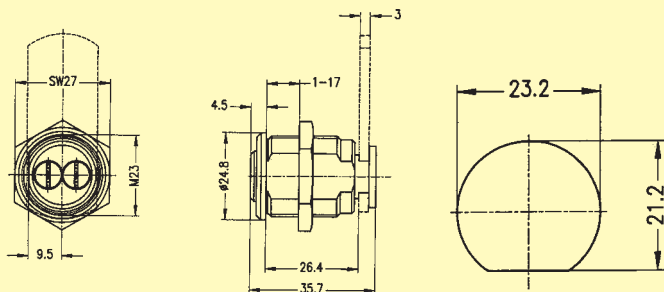
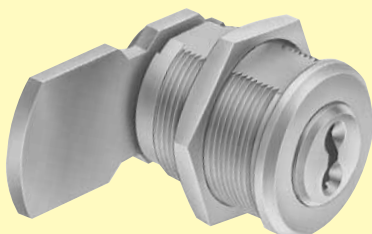
Version 1 (partly assembled packaged separately)

MB 23 G: incl. nut M22x0,75

Version 2 (partly assembled all parts packaged together)

MB 23 G: incl. nut M22x0,75

3KS



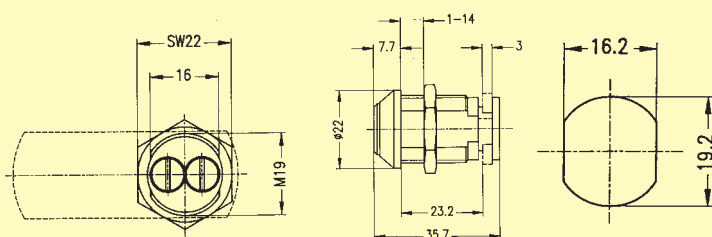
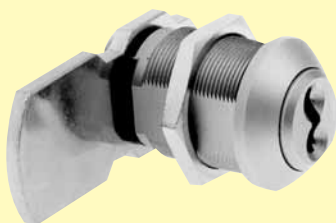
MB 23 MB cam lock

With lock cam 5072, A = 33,5 mm (different cams available),
cam rotation 90°, nickel-plated (NI),
incl. 2 keys, key can only be withdrawn when locked

on request: MB 23 MBS, special version

key can be withdrawn in locked and open position

3KS



MB 19 cam lock

With lock cam 5072 A = 33,5mm (different cams available),
cam rotation 90°, nickel-plated (NI),
incl. 2 keys, key can only be withdrawn when locked

on request: MB 19 MBS cam lock

key can be withdrawn in locked and open position

EVVA

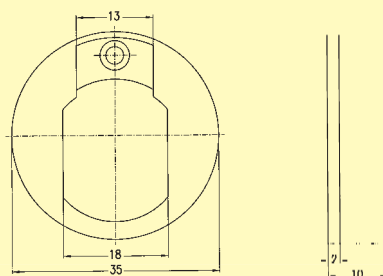
Special Cylinders



SR 23 escutcheon

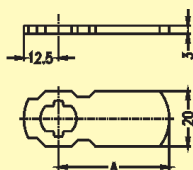
for cam locks

dust cover for MB 23 and MB 23 G



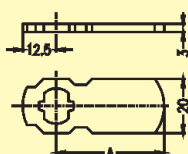
Special cams for MB 23 G and other cam locks

5072

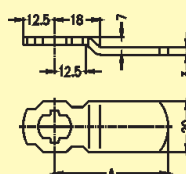


A	27,5	33,5	40	45	50	55	60	65	70	75	80
---	------	------	----	----	----	----	----	----	----	----	----

5073

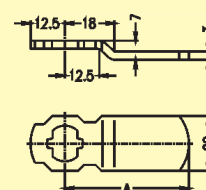


5087



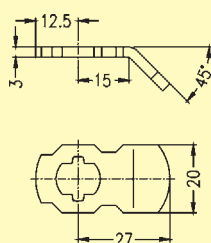
A	45	65
---	----	----

5088

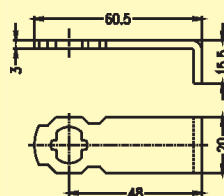


A	45	65
---	----	----

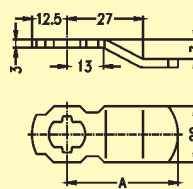
5089



5090

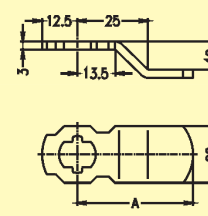


5091



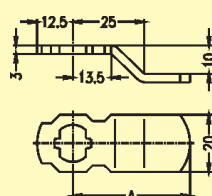
A	39,5	59	65,6
---	------	----	------

5092



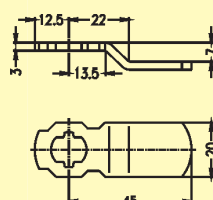
A	41	48,5	52,5
---	----	------	------

5094



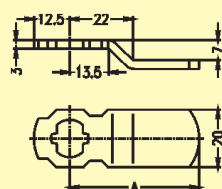
A	33,5	41	59
---	------	----	----

5095



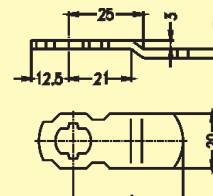
A	45	50
---	----	----

5096



A	33,5	45
---	------	----

5097



A	27,5	33,5	37	40	45	50
A	55	60	65	70	75	80



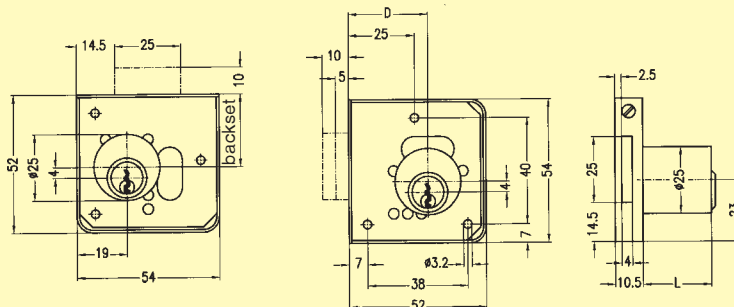
Cabinet Locks



Universal 4000

The easiest cylinder installation in pre-mounted cabinet locks.
lock case design: Iron, nickel-plated; can be used left and right, 2 keys included

backset: for doors: 25, 30 and 35 mm
 for drawers: 20, 25 and 30 mm

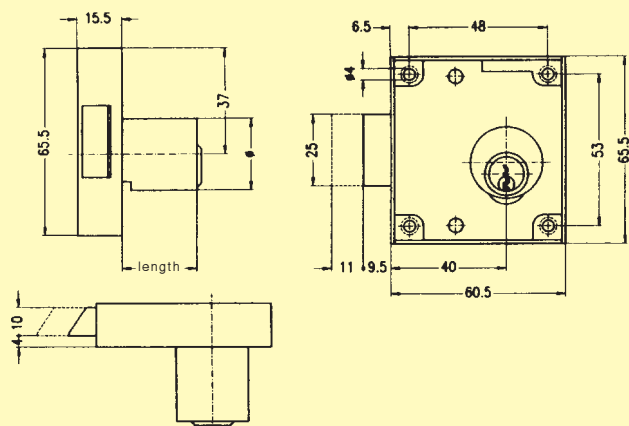


Universal 4040 FF Universal 4040 FR

Function-type FF:
 Withdraw latch 180° (unlocked)
 locking rotation 360° - latch locked

Function-type FR:
 Withdraw latch 180° (unlocked)
 locking rotation 360° - latch 19 mm projected and locked

lock case design:
 - completely galvanised, stainless steel springs,
 left/right specification necessary
 - 2 keys included
 - **backset:** 40 mm



Advantages of universal cabinet lock series

- the cabinet lock is pre-assembled without cylinder
- the cabinet parts are provided with all drillings necessary for the future installation
- cylinders can be inserted very easily on site at any time, because they are screwed at the forend side.
- as a consequence, the cylinder can fully be integrated in the master key system (in all EVVA systems).
- a later exchange to DPS, 3KS, DUAL or MCS is possible any time
- can be used on both sides
- for doors and drawers
- variable backset



Cylinders for Cabinet Locks

DPS
DUAL
3KS

MCS
Open Profile



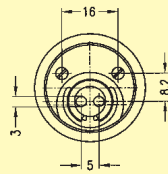
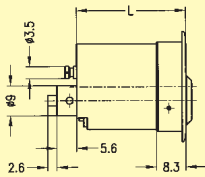
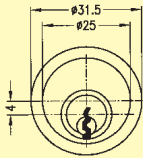
cylinder for cabinet
locks MRT 25

MRT 25 / MRL 25

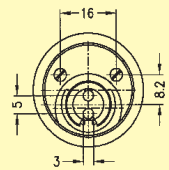
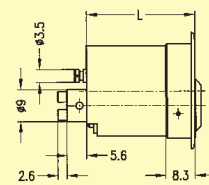
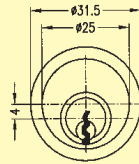
- 25 mm
- can be used left and right
- 2 keys included
- with escutcheon

cylinder lengths:

Open Profile, DPS,: 26, 31,36 mm
DUAL, 3KS, MCS: 31, 36 mm



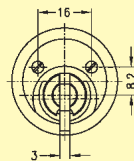
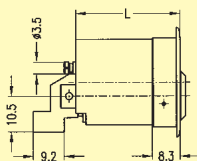
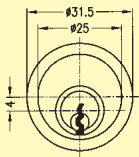
MRT 25



MRL 25

DPS
DUAL
3KS

MCS
Open Profile



MR 25 ESP

MR 25 / MR 25 ESP

- 25 mm
- can be used left and right
- 2 keys included
- with escutcheon

cylinder lengths:

Open Profile, DPS: 26, 31, 36 mm
DUAL, 3KS, MCS: 31, 36 mm

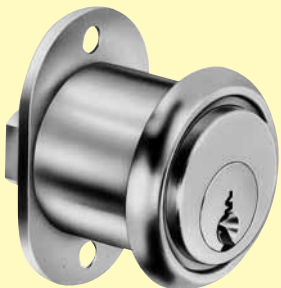
DPS
DUAL
3KS

MCS
Open Profile

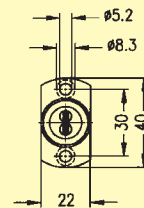
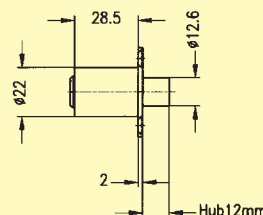
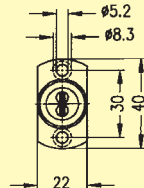
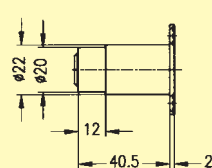
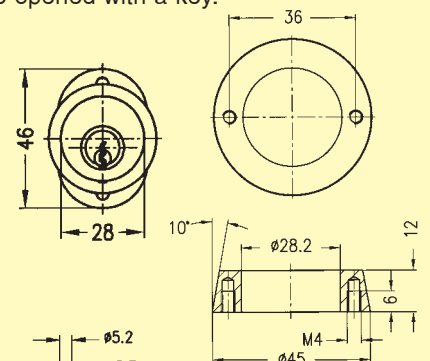
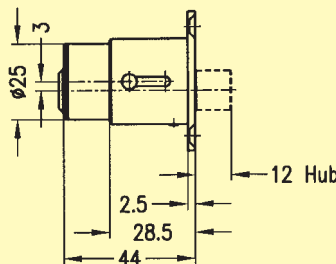
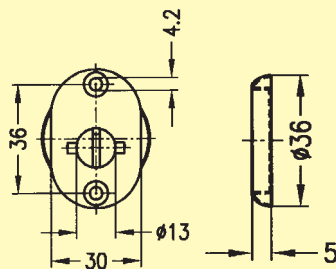
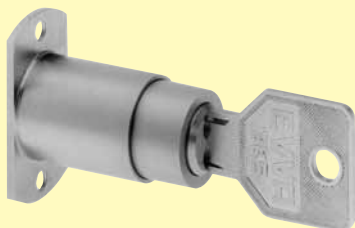
DRZ push-in Cylinder

- 28 mm
- locking bolt 13 mm
- stroke 12 mm satin nickel-plated, with escutcheon
- 2 keys included

DRZ
for Open Profile, DPS, MCS



DRZ 22
for 3KS, DUAL



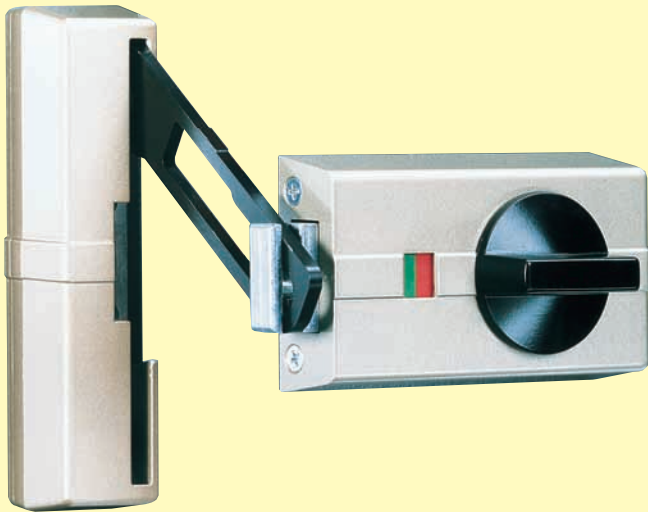
EVVA

Rim Locks

K 9000 series

Best security, comfortable handling and easiest assembly show the high-quality of this additional security lock.

- Impeding burglary according to ÖNORM B 5456
- For left and right doors
- Easy and quick assembly
- For door thickness 38-50 mm
- Additional drilling protection because of sharpened and hardened fixing screws at the rim cylinder
- Rim cylinder with drilling- and picking protection; available in all EVVA systems
- Can be integrated in every EVVA system
- For inward opening doors
- Variable backset can be set to 60 or 70 mm
- Integrated security catch without engagement, so that the door can be closed any time in case of emergency.
- Security lock case with multi-point screwing
- You lock from the inner side with the turn knob
- The red-green display shows, whether the door is locked or if the security catch is activated, respectively.
- Easy handling because of operation with only one button.



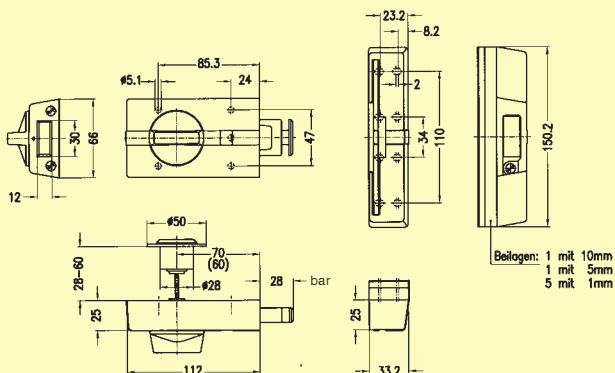
K 9000 for inward opening doors

according to ÖNORM B 5456

Security lock case with multi-point screwing, with integrated security catch, with red/green display, double throw, can be switched to left or right.

Rim cylinder with drilling- and picking protection, nickel-plated with escutcheon of hardened steel (chisel- and drilling protection of the rim cylinder) and sharpened and hardened fixing screws (additional drilling protection) or rim cylinder, satin brass, with brass escutcheon.

Finish of the case: new metallic silver, metallic gold, metallic bronze, white



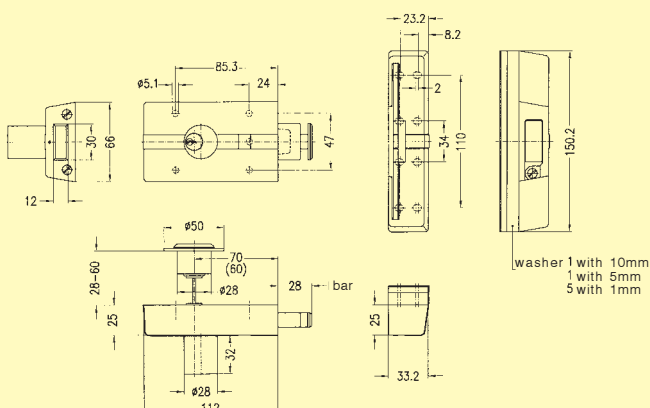
K 9020 for inward opening doors

Security lock case with multi-point screwing, with integrated security catch, with red/green display, double throw, **with internal and external cylinder**, can be switched to left or right.

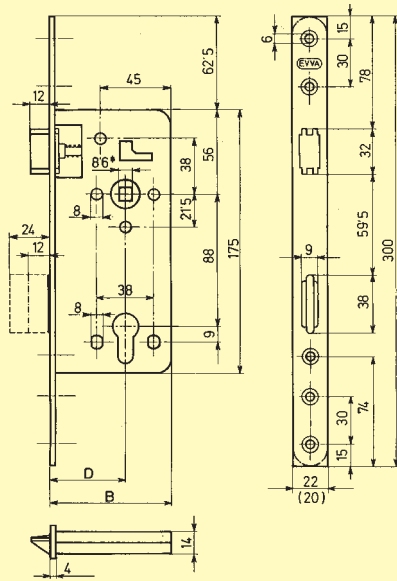
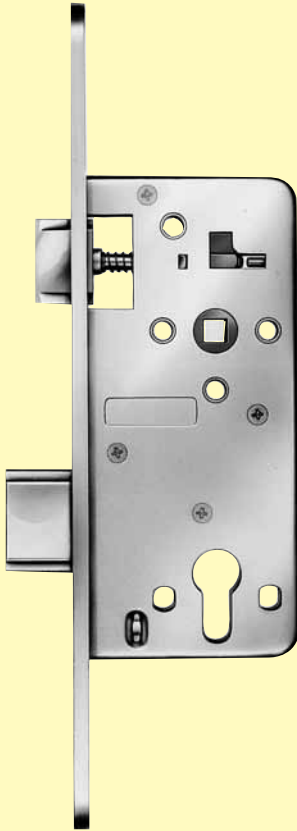
The internal cylinder guarantees additional protection against burglary. It is especially useful for glass doors, because you can only unlock with the key. Internal cylinder nickel-plated or brass with finish gold metallic.

Rim cylinder with **drilling- and picking protection**, nickel-plated with escutcheon of hardened spring-steel (chisel - and drilling protection of the rim cylinder) or rim cylinder, satin brass, with brass escutcheon.

Finish of the case: new metallic silver, metallic gold, metallic bronze, white



Mortice Locks

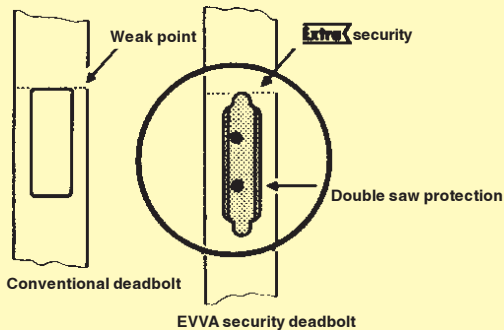


E 7000 S series

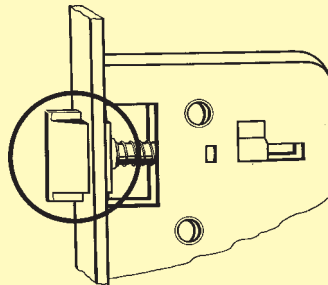
- **security profile dead bolt** withstands 10.000 Newton force on the side and 8.000 Newton force on the front. Double cutting protection of hard metal.
- **latch, which can be locked**, is already arrested after the first dead bolt tour - therefore additional dead bolt function. The dead bolt can be locked after complete latching, can be switched to left or right.
- **robust closed lock-case**: forend, forend-fixing and lock-case withstand 10.000 Newton force on the side. High resistance and stability.
- **robust forend** increases resistance. Fixing by four-times screwing.

available with: round forend 300 x 4 x 22 mm
 300 x 4 x 20 mm
 square forend 300 x 4 x 22 mm
 300 x 4 x 20 mm

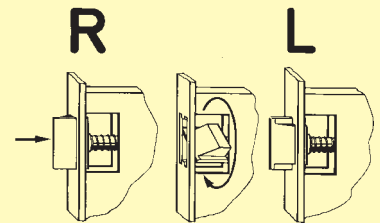
- **protection against corrosion** for all parts of the lock
- **fire resistance classes**
 standard "fire resistant T30"



Austrian Patent No. 390.989



latch, that can be switched



Mortice locks E 7000 S

For Euro profile cylinders DZ, HZ and KDZ, double throw, 25 mm dead bolt projection, round or squared forend.

E 7020 S/W with latch retraction
 forend measure: 300x4x20mm

E 7022 S/W with latch retraction
 forend measure: 300x4x22mm

3 different width of case available (80,90,100mm)
 3 different backsets (50,60,70)



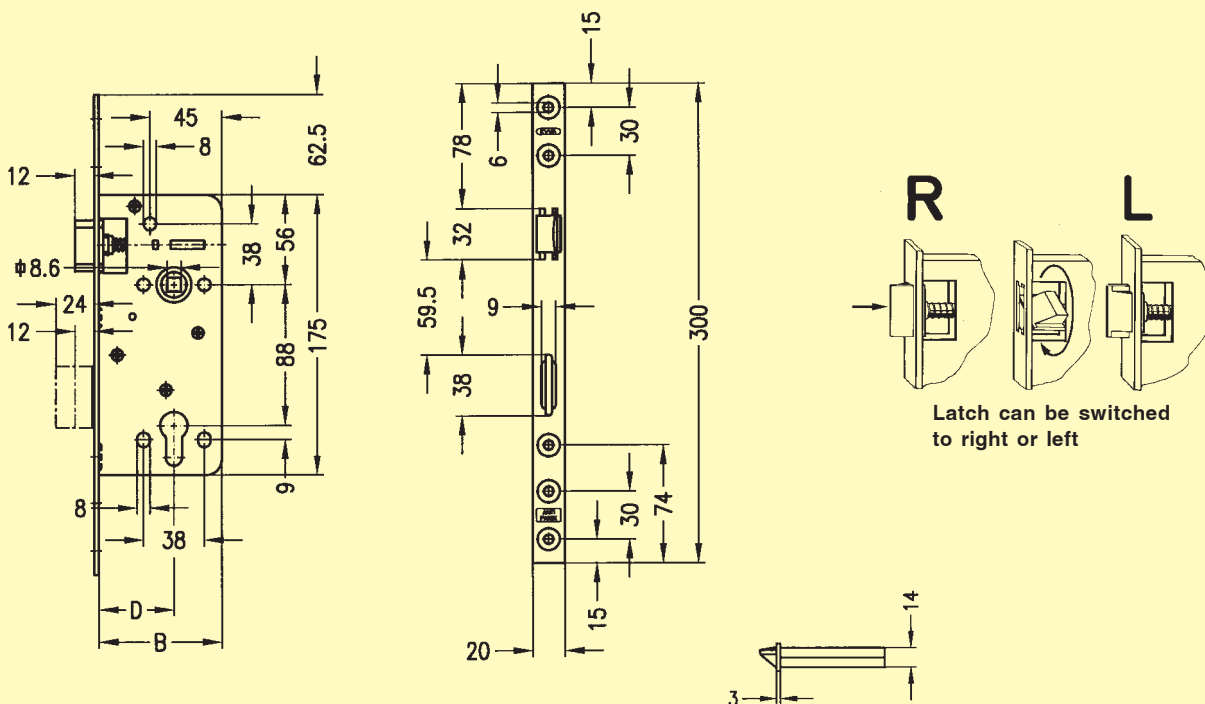
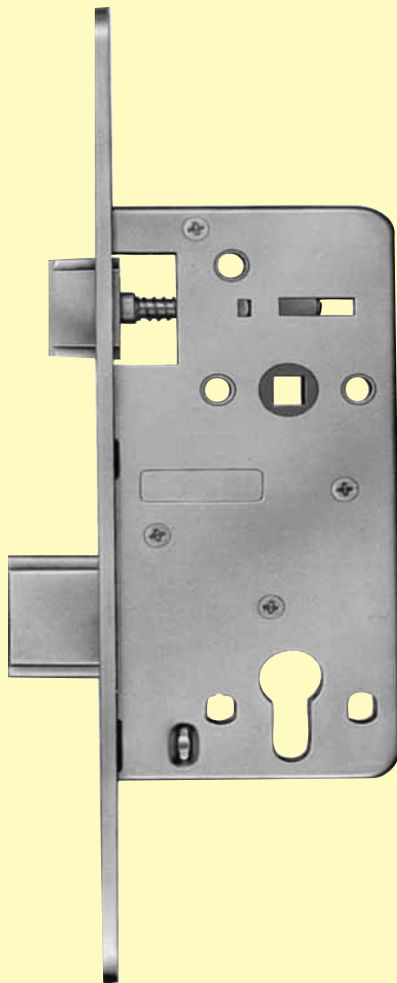
Mortice Locks

E 7020 P

Anti-panic lock

- **Panic function:** In case of emergency the door can be opened from the inner side with the handle even if the dead bolt is locked. The dead bolt is locked back from outside with the profile cylinder and the latch will be retracted.
- **Security profile dead bolt:** withstands 8.000 Newton force on the side. High resistance, stability and protection against dust and pollution.
- **Latch can be switched from left to right**
- **Robust closed lock case:** forend, forend-fixing and lock-case withstand 8.000 Newton force on the side. High resistance, stability and protection against dust and pollution.
- **Robust forend:** increases resistance. Fixing by four-times-screwing.
- **Protection against corrosion** for all parts of the lock
- **Fire resistance classes:** standard "fire resistant T30"

For fittings with knob/handle design



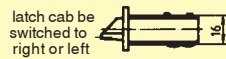
Mortice Locks

E 750/E 750W E 770

E780/E780W

E 760

E 790



Narrow Style Lock Cases

For Euro profile cylinders DZ, HZ and KDZ or lever lock key including 2 keys/lock

Design: with dead bolt and latch (can be switched to left or right), completely yellow patinated, forend 23 x 230 mm, squared

E 750: Lever lock with latch and dead bolt, without latch retraction

E 750W: Lever lock with latch and dead bolt, with latch retraction

E 760: Lever lock with dead bolt

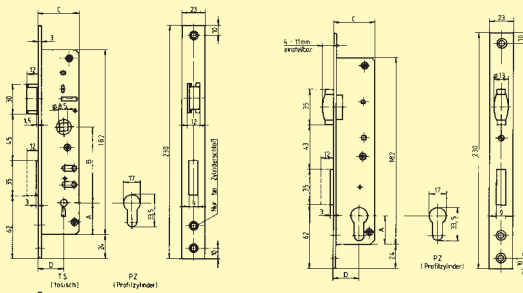
E 780: For profile cylinders with latch and dead bolt, without latch retraction

E 780W: For profile cylinders with latch and dead bolt, with latch retraction

E 770: Profile cylinders with dead bolt

E 790: Profile cylinders with roll latch

E 750 / E 750 W / E 760 / E 780 / E 780 W / E 770 / E 790

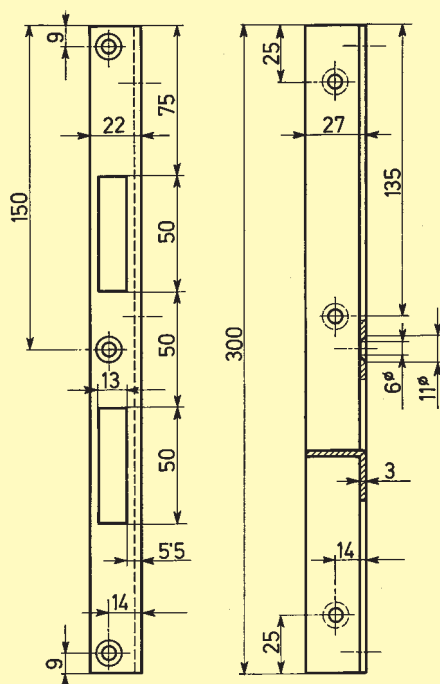


SSB

SSB Security Striking Plate

Steel plate, thickness 3 mm, length 300 mm, 6 security screws

finish: galvanised chrome



Security Fittings



SB 88 Security Fitting

- Protection requirements are fulfilled according to ÖNORM B 5338
- DIN 18 257-ES 2-L-ZA
- VdS class B
- Centre for ÖNORM 88 mm
- Spring loaded escutcheon for 10-18 mm cylinder projection
- For door thickness 38 - 90 mm with a square spindle
- Screws M 8 mm 8.8
- Standard finishes: - PB = polished brass
- NI = satin nickel
- On request: also available as DIN 72 mm and 92 mm

- Standard: „fire resistant T 30“

SB 88K: Outside knob, inside handle

SB 88GK: Outside special edged knob, inside handle

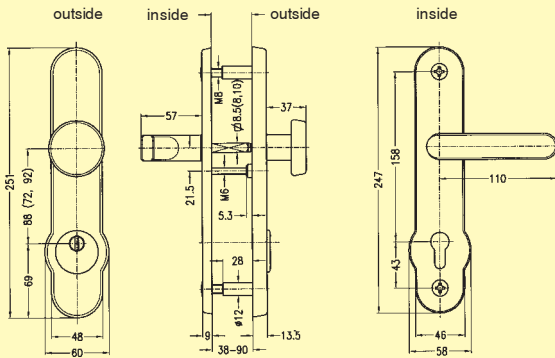
SB 88D: Outside and inside handle

Outside fitting only

SB 88AK: Knob set for outside

SB 88AGK: Special edged knob set for outside

SB 88D: Handle set for outside



Security Fitting

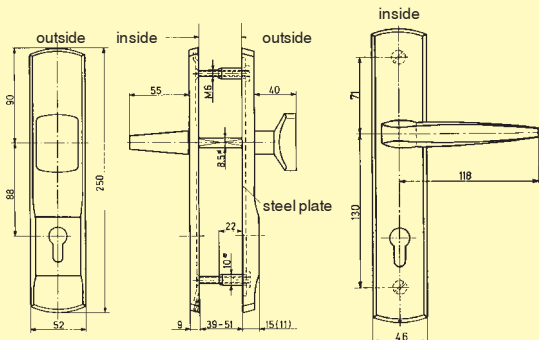
with integrated manganese steel plate

- Protection against burglary according to ÖNORM B 5455
- Protection against breaking off
- Protection against screwing the cylinder off the outer backplate
- Invisible screwing of the inner backplate
- For door thickness 39 - 51 mm
- Standard: "fire resistant T30"

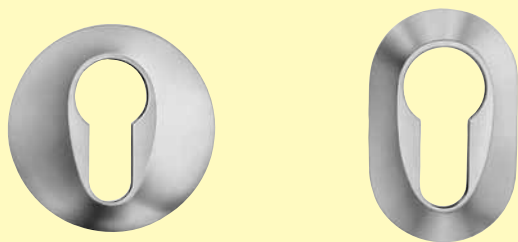
SB 15/1: New silver anodised – F2 } 15 mm in the cylinder area,
Gold anodised – F3 } outside knob, inside handle
Bronze anodised – F4 }

SB 15/1GK: New silver anodised – F2 } 15 mm in the cylinder area,
Gold anodised – F3 } outside edged knob,
Bronze anodised – F4 } inside handle

SB 15/2: New silver anodised – F2 } 15 mm in the cylinder area,
Gold anodised – F3 } outside and inside handle
Bronze anodised – F4 }



Security Escutcheons



Security Escutcheons

Chrome nickel-steel, stainless
External escutcheon 6,8,10,12,14,16,18,20 mm height,
round or oval design, colours: brass or black

C 50: Chrome stainless nickel-steel,
round diameter 50 mm

D 32: Chrome stainless nickel-steel,
Oval, 49x32 mm

Escutcheons

Available in the following designs: oval, round or
squared covered escutcheon.

E 1 / E 2
E 3 / E 4



E 5 / E 6 / E 7

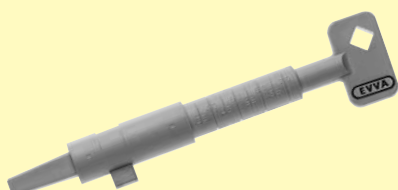


E 12 / E 12A
E 13 / E 13A
E 14



Accessories

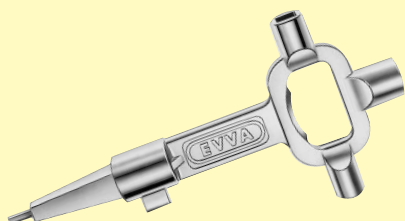
B 1 Construction phase tool, plastic



- The top of the key with conic square enables easy locking and opening
- Locking cam for profile cylinder cam
- Square spindle of 7-10 mm
- Cylinder measure

Finish: plastic

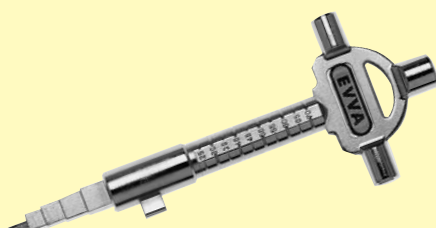
B 2 Construction phase tool, nickel



- The top of the key with conic square enables easy locking and opening
- Square spindle key 6, 7 and 8 mm
- Locking cam for profile cylinder cam
- Square spindle of 6-10 mm
- Hexagon key 3 mm

Finish: die casted nickel

B 3 Construction phase tool with cylinder measurement



- The top of the key with conic square enables easy locking and opening
- Square spindle key 6, 7 and 8 mm
- Locking cam for profile cylinder cam
- Square spindle of 7-10mm
- Hexagon key 3 mm
- Cylinder measure

Finish: die casted nickel, nickel-plated





The key to security

EVVA-WERK
Ges. m. b. H. & Co. KG
Wienerbergstraße 59-65
A-1120 Wien
Tel. +43-1- 811 65-0
Fax +43-1- 812 20 71
e-mail: export@evva.com

EVVA SICHERHEITSTECHNIK
GmbH
Höfftgeshofweg 30
D-47807 Krefeld
Tel. +49-21 51-37 36-0
Fax +49-21 51-37 36 35
e-mail: office_krefeld@evva.com

EVVA SICHERHEITSTECHNIK
GmbH & Co KG
Köpenicker Straße 36-38
D-10179 Berlin
Tel. +49-30-279 05 02
Fax +49-30-279 37 21
e-mail: office_berlin@evva.com

EVVA SICHERHEITSTECHNIK
GmbH & Co KG
Schongauerstraße 23
D-04328 Leipzig/Paunsdorf
Tel. +49-341-25 11 533
Fax +49-341-25 11 559
e-mail: office_leipzig@evva.com

<http://www.evva.com>