

**User key for e-primo iButton**  
Robust iButtons are available for your use.

**User key for e-primo air**  
You can choose from different formats, such as cards, key tags or NFC-compatible mobile phones.

How does the e-primo differ from the locking cylinder in your house or apartment door? In a small, yet fundamental way. There is now a thumb turn where you used to insert your key. The electronics in the e-primo cylinder control who is allowed to come in and who is not. When you hold the user key against the thumb turn and you are authorized, the door can be released or locked.

The best thing about it is that no wiring is required for installation. e-primo will also fit exactly into the cylinder cut-out where your current locking cylinder is located. When purchasing, you only need to take into account the cylinder opening in the escutcheon and the length of the e-primo.

# e-primo

## The electronic cylinder with the primo touch

This is made possible by the intelligent interaction of technology with a memory function embedded in the cylinder.

Normal keys are replaced with user keys, such as iButtons, key tags, cards, watches or wristbands. They allow you to open doors. As an e-primo owner, you can authorise or delete user keys yourself, or assign them special functions – directly at the e-primo using a set of function keys. No PC, software or wiring is required. This provides you with a wide range

of new and practical ways which make handling security easy. You can now quickly regulate comings and goings through your door according to your needs. Feel secure and enjoy the freedom of your flexible e-primo!

Security for your door – combined with the freedom to change authorisations instantly and react quickly when a key is lost. The e-primo electronic cylinder now offers electronic access to your house, apartment or business.

**Installation example**  
Housing unit: 1  
e-primos: 1  
User keys: 5 (or many more)

Family life can be chaotic. e-primo now makes it easy for you to feel secure in your home. As an owner, you can delete unsecure, lost or stolen user keys, or re-authorise new user keys at any time in one quick, easy step using function keys.

**e-primo & Family**

- ▶ Lost user keys, such as those belonging to your children, no longer represent a security risk.
- ▶ New time-restricted user keys for people such as family members or neighbours can be quickly assigned authorisation at the e-primo.
- ▶ User keys for people who should no longer be allowed authorisation for entry can be easily deleted without the person being present.

Sylvia loves being a mother, but her children don't exactly make things easy for her. They are always losing their keys. Planning holidays is also stressful as she needs to find somebody she can trust to look after the cat and houseplants. Sometimes Grandmother does it, sometimes she asks the neighbour. Sylvia has longed to find a way to make gaining access to her apartment much easier. The solution: e-primo

Michael enjoys being footloose and fancy free. He has a lot of friends. He has entrusted many of them with a user key as he finds it much more practical and doesn't mind if people come and go as they please. However, there are times when he needs to use his delete key. Michael also finds this option very practical.

**Installation example**  
Housing units: 2  
e-primos: 2  
User keys: 3 (or many more)

**e-primo & Singles**

Anyone who prefers free and easy living needs the right tools. e-primo is just the right thing. New, access-authorised user keys can be instantly assigned (up to 249) and effortlessly managed thanks to function keys. Like-minded people can even assign authorisation to each other's e-primos if they wish. There's never been anything like it before!

- ▶ New friends or acquaintances can instantly be issued with user keys - and authorisation deleted again if required.
- ▶ New keys and cards can be quickly and easily supplied - Buy them in your specialist store and programme them yourself.
- ▶ User keys can be assigned authorisation for a number of e-primos, thus enabling friends to build their own e-primo network.

**Installation example**  
Company units: 1  
e-primos: 2  
User keys: 12 (or many more)

The e-primo cylinder also provides ideal access control for smaller companies, such as lawyers' offices, doctors' practices or small businesses. You can use it on several doors or at various locations and thus control access systematically. Your own user key enables you to lock and unlock all e-primo cylinders, such as those on doors to offices, storerooms and private apartments. User keys for your employees or suppliers, however, will only open doors which you decide they can use.

**e-primo & Business**

It doesn't matter whether you use e-primo just for entrance areas or for your whole company premises.

- ▶ You are in control - You can immediately block user keys held by ex-employees who have left the company.
- ▶ Separate off areas which only authorised user groups can enter using e-primos.
- ▶ Use e-primo cylinders to access different buildings using the same user key.

Mechanical locking systems are quickly and effortlessly changed over to an e-primo system.

Entrepreneur James Morton feels content in the busy atmosphere of his company. The trust he places in his employees and the freedoms he allows them play a part in his success. However, he knows that he needs to stay in charge and keep control. e-primo is one of the convenient tools which help him to do so.

**Starter Package:**  
**e-primo cylinder**  
**+**  
**media kit**

- 1 e-primo cylinder
- 1 battery
- 1 cylinder fastening screw
- 1 installation tool
- 1 gasket
- 1 set of operating instructions
- 3 user keys
- 4 delete keys
- 1 programming key
- 1 copy key

# the package

## Ready for your use from your security specialist store

So that you can instantly test out the new security system with the e-primo touch, we have put together a starter package. It contains all the parts required for setting up the cylinder for operation.

- ▶ You can obtain the number of e-primos and additional user and function keys you require from your specialist dealer (see overleaf for choice of designs and media).
- ▶ The escutcheon must feature a cylinder cut-out. Your specialist retailer will gladly offer you guidance for special solutions.

**For a perfect fit:**  
before purchasing e-primo, measure the distances from the middle of the screw which fastens your cylinder to the outer side (A) of the door and to the inner side (B) of the door.



# e-primo

All characteristics at a glance:



► **Professional quality:** founded in 1919, EVVA is one of the leading manufacturers of mechanical and electronic security technology in Europe. e-primo is the result of development in our in-house research department. Private households and companies of all sizes the world over place their trust in EVVA security solutions.

► **Trendy**

State-of-the-art electronics for maximum security  
e-primo not only adapts itself to different door situations, but also to individual surroundings. You can select the high-grade metal surface and the colour of the thumb turn yourself.

► **Convenient**

Simple operation with audible and optical feedback signal  
Using e-primo is child's play - Hold the key against the thumb turn, wait for a positive feedback signal from the cylinder, then turn.

► **Flexible**

Versatile programming function and instantly changeable authorisations  
The owner, or so-called superuser, can issue or withdraw authorisations for different people at doors at any time.

► **Secure**

Highly effective security in the case of key loss and attempted break-ins  
The locking cylinder features drilling and plug pulling protection. In the event of loss, user keys can be easily deleted at the e-primo cylinder.

► **Individual**

The owner, or so-called superuser, decides who to issue authorisation to  
The superuser has full control. Changes to authorisations can only be made using the customised programming key.

► **Easy**

Easy installation and optimum maintenance  
The product's simplicity means it can be widely distributed through specialist retail outlets. Users can programme e-primo themselves without any help from specialists.

► **Variable**

The e-primo cylinder adapts to different door situations  
It fits into lock and escutcheon combinations featuring Euro profiles. There are also versions available for round profiles and oval profiles.

► **Long-lasting**

e-primo is versatile and extendable  
Basic equipment consists of a starter package containing a cylinder and media kit. Locking systems can be equipped with further cylinders, user keys and function keys.

## ID technologies

### e-primo iButton:

identified when key is placed directly against the key

User keys:  
iButton

### e-primo air:

Contactless identification, Simply hold key against the thumb turn

User keys:  
card, wristband, key tags, watch, selected NFC-compatible mobile phones

### Surface finishes

Choose the surface finish which matches your door.

#### Standard



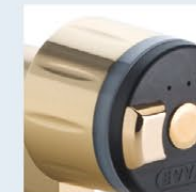
"Nickel" surface



"Satin chrome" surface



"Polished chrome" surface



"Polished brass" surface



"Black" surface



"Brown" surface

### Inside thumb turn

Protects electronics. Easy opening from the inner side of the door without a user key.

### Electronics module

Protected against physical attack and tampering on the inner side of the door.

### Battery

Up to 60,000 opening procedures with a standard battery (CR123A); Low battery warning indicated by light flashing twice & descending warning tone.

### Cam

When the knob is turned, the cam opens the door by disengaging the mortise lock. Also available as a cogwheel cam version - for multi-point locks, for instance.

### Cylinder part

Together with security devices on the door, the cylinder offers strong physical resistance to break-in attacks. Max. length: 392 mm.

### Light ring

Indicates the cylinder status using acoustic signals and different coloured lights.

### Outside thumb turn

This is where the user key is identified. Door is then opened by turning the thumb turn. Impermeable to splash-water.

### Emergency power device

Optionally available for emergency opening of electronic cylinders.

e-primo iButton  
e.g. in Swiss profile

e-primo air  
e.g. in Euro profile

What will my e-primo look like?

Just use our e-primo configurator on our web site:  
[www.evva.com/e-primo](http://www.evva.com/e-primo)

### User key for e-primo air ►

- Besides tags and cards, wristbands and watches are also available.
- Some selected NFC-compatible mobile phones can also be used.
- Identification takes place in a contactless system.



Some NFC-compatible mobile phones



Key tag



Card

### User key for e-primo iButton ►

- iButton user keys are available in numerous colours.
- This enables you to immediately see who a key belongs to when one is found.
- You can simply choose your favourite colour.



Black iButton



Yellow iButton



Red iButton



Blue iButton



White iButton

### Function keys

Programming key:  
Delete key:  
Copy key:  
Blocking key:

Office key:  
Emergency key:

Authorises user keys  
Deletes user keys  
Assigns delete card to a user key  
Temporarily blocks all user keys - for instance, in the event of fire or during renovation work  
Permanently open mode for passageway doors during work hours, for instance  
For operating cylinders without user keys



Programming keys



Delete keys



Copy keys



Office keys



Blocking keys



Emergency keys

### Grip recesses

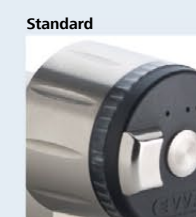
Available in "finely fluted" or "non-slip" design.



"Non-slip" grip surface

### Light ring

Match the light ring design to the colour of your outside thumb turn cover.



"Clear transparent" light ring

### Colour of outside thumb turn

Choose the outside thumb turn cover in a colour which matches your door.



"Black" design



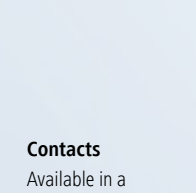
"Non-slip" grip surface



"Transparent white" light ring



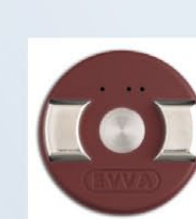
"Grey" design



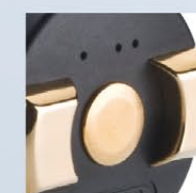
"Blue" design



"Nickel" contacts



"Red" design



"Brass" contacts



"Transparent white" design



"Clear transparent" design

\* Only available as e-primo iButton, ° Includes light ring

# e-primo

[www.evva.com/e-primo](http://www.evva.com/e-primo)



security for your door



freedom in your hand



the primo touch!