

Overview and Decision Guidance

Buildings & Locking Systems



High-level security

The EVVA security pyramid

Which locking system is the right one for your requirements? Choosing a master key system presents a great challenge to those who make the decision as any differences and benefits can often only be found in a product's technical features. However, choosing a manufacturer is also the beginning of a long partnership as security solutions also stand out because they represent a highly safe investment and are designed for long-term use in a master key system.

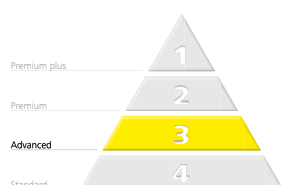
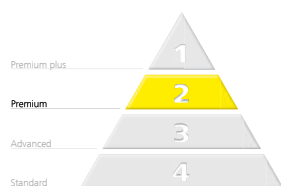
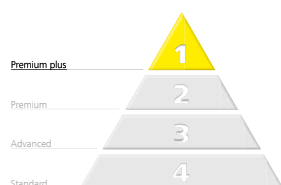
How can we best help you in making your decision?

Security - clear and easy to understand: the EVVA Security Pyramid. From Standard through to Premium plus, the EVVA Security Pyramid offers a clear classification of the different security levels and serves as a well-defined guide.

You can rely on EVVA recommendations. Companies from all over the world place their trust in EVVA locking systems. Our systems offer a very high level of security right from the ground up. However, requirements regarding security, convenience and organisation are distinct for different industries and building types. As a result of years of experience, EVVA can recommend the locking system which will best meet your company's requirements.



Security for every need. EVVA especially developed its Security Pyramid to provide quicker and easier guidance. It shows you how locking systems are structured and how they differ from one another. The pyramid consists of four security levels.



Premium plus: The highest possible security level enables highly complex master key systems to be created and produced with an almost infinite number of individually coded keys. Maximum key copying protection is provided by technological protection.

Premium: Complex master key systems are possible at this level, including optimum key copying protection.

Advanced: Master key system complexity is designed for an operation-oriented structure. Key copying protection is highly effective.

Standard: The base of the Security Pyramid contains locking systems which fully comply with the general high standard of EVVA products. Master key system complexity is matched to a user-oriented structure. Key copying protection is provided from a technical, organisational and patent-protection perspective.

EVVA Security Levels are an uncomplicated way of showing the degree of technical protection, key copying protection and complexity in master key systems.

The higher the security level is, the higher the standard may be for master key system complexity. The security level thus determines how many different hierarchy levels, group keys and master keys - i.e. possible combinations - can be implemented in a system.

The higher the security level, the greater a system's key copying protection is. As a basic principle, all systems include organisational protection (security card), legal protection (patent protection) and technical key protection (protection against copying, tampering and reading of keys).

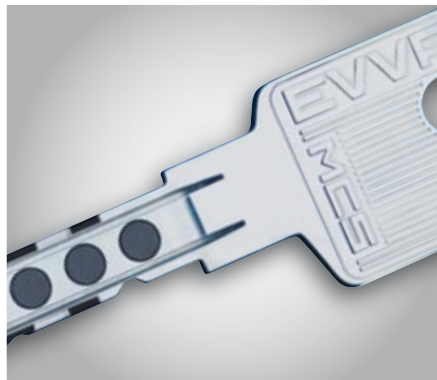
Technical protection increases with each rise in a locking system's security level, right through to technological protection, which eliminates copying, tampering and reading of keys using state-of-the-art technology.

System overview

Security systems for master key systems

MCS · Magnetic Code System

This unique locking technology is based on a combination of two scanning technologies. Magnetic and mechanical coding provide a solution for complex and almost unlimited locking authorisation needs and requirements. Maximum protection is provided by unauthorised key copying of legal, organisational, technical and technological measures.



3KS_{plus} · 3-Curve System

With its exceptional reversible key, this system excels due to its unique, patented, springless operating principle. It is fully weatherproof and is suitable for complex access authorisations. Optimum protection is provided by unauthorised key copying of legal, organisational and technical measures.



ICS · Inner Coded System

This locking system is highly suitable for well-structured master key systems. With its solid reversible key, ICS also ensures convenience and security. Protection is provided by unauthorised key copying of legal, organisational and technical measures.



EPS · Extended Profile System

This is a well-established locking system which meets all basic modern security technology requirements with its triple authorisation check plus protection against unauthorised key copying provided by legal, organisational and technical measures.

MCS	3KS ^{plus}	ICS	EPS		
●				highly complex	complexity of master key systems
	●			complex	
		●		operation-oriented	
			●	user-oriented	
6	6	6	6	lock security EN-1303:2005	standards
2	2	2	2	attack resistance EN-1303:2005	
4	4	4	-	hazard zones ENV-1627	
Wz 6	Wz 6	Wz 6	Wz 6	resistance class ÖNORM B 5351	
90 min	90 min	90 min	90 min	fire resistance EN-1634-1	
C	C	C	C	corrosion resistance EN-1670	
B(+)	BZ(+)	BZ(+) ¹	BZ(+)	VdS for master key systems	certificates
B(+)	BZ(+)	BZ(+) ¹	BZ(+)	VdS for keyed to differ	
***	***	**	-	SKG ²	
✓	✓	-	-	BSI ³	
○	●	●	-	reversible key	system characteristics
●	●	●	●	available as Combi-key	
●	●	●	◐	picking protection	cylinder security
●	●	●	◐	drilling protection	
●	●	●	●	pulling protection	
●	●	●	○	modular design	
-	-	●	●	compact design	
●	●	●	●	key profile	
8	12	13	6	active locking positions	
7	10	-	10	max additional (passive) locking positions	

Standard ●, option ○, to a limited extent ◐

¹ In progress


Building types

Recommendations for your building

As a security systems provider with decades of experience, we are familiar with typical security requirements in a wide range of industries and organisations. Our security system recommendations are thus ideally matched to your building environment, organisational structure and user needs. They take into account all requirements for a whole range of building types with regard to security, convenience and organisation (the EVVA Trinity Principle).

Educational facilities: universities, schools, nursery schools and further education institutions



Residential buildings for communities: residential accommodation for the elderly, nursing staff, employees, students and other groups, convents, prisons, barracks and other communal living quarters



Health care facilities: hospitals, nursing homes, care institutions, medical centres and doctors' practices.



Office buildings: office and administration buildings, ministries, government offices, banks and agencies



Industrial premises: industrial enterprises, production plants, power stations, workshops and warehouses



Infrastructure facilities: railway stations, airports, cable cars, mobile telephone structures, telecommunications facilities and transmitters.

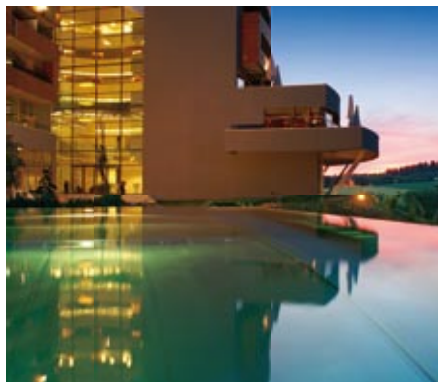
	Mechanics				Electronics	
	MCS	3KS _{plus}	ICS	EPS	XS4 iButton	XS4 MIFARE
Educational facilities	○	●	●	○	○	●
Office buildings	○	●	○	●	●	●
Health care facilities	●	●	○	○	●	●
Wholesale & retail objects	○	●	○	●	●	●
Hotels & catering companies	○	○	●	○	●	●
Industrial objects	○	●	○	●	●	●
Infrastructural facilities	●	●	○	○	●	●
Cultural & recreational facilities	○	●	○	●	●	●
Residential communities	○	○	●	●	●	●
Residential buildings & objects	○	○	●	●	○	●

Wholesale & retail premises:

supermarkets, shopping malls, chain stores, filling stations and other retail outlets

Hotels & catering companies: hotels, guest houses, hostels and restaurants

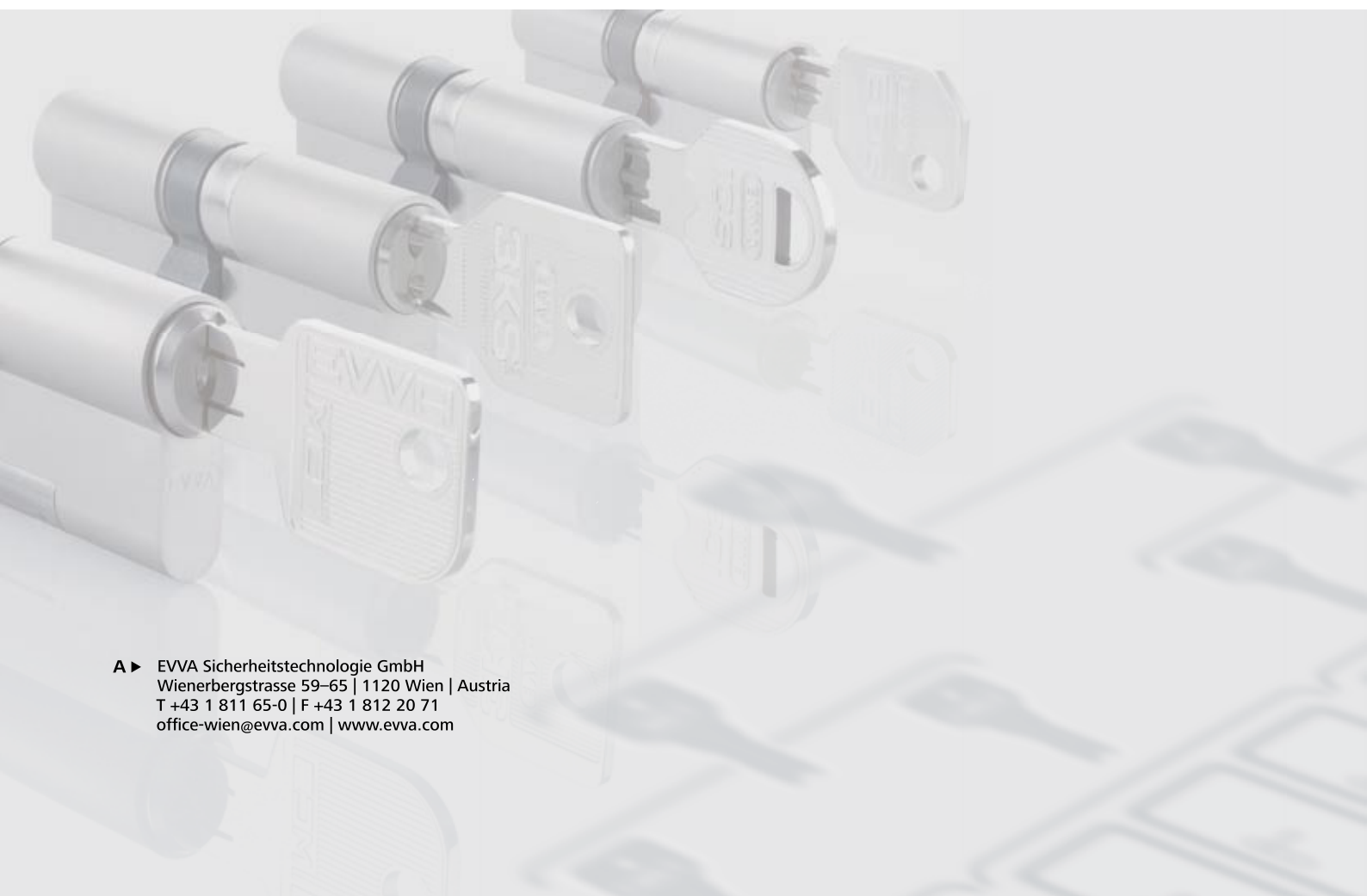
very well suited	●
well suited	○
suited	○



Culture & leisure facilities: museums, opera houses, concert halls, theatres, fitness centres, sport facilities, swimming pools, casinos and other amenities

Residential developments & properties: property managers, cooperatives, residents' associations and real estate companies





A ▶ EVVA Sicherheitstechnologie GmbH
Wienerbergstrasse 59–65 | 1120 Wien | Austria
T +43 1 811 65-0 | F +43 1 812 20 71
office-wien@evva.com | www.evva.com